

TimingResearch Crowd Forecast Newsletter (Beta)

Week 74 – 02/22/15 Report

Open-ended responses for Questions #1, #4, and #5 start on page 3.

Question #2. Based on any technical or fundamental indicators you want to use, would you predict that the S&P 500 index will move higher or lower next week? (from Monday's open to Friday's close; February 23-27)

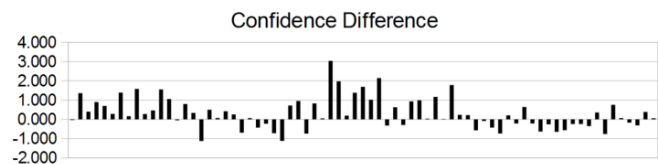
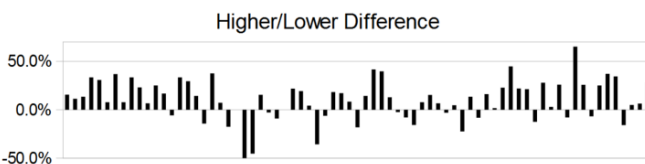
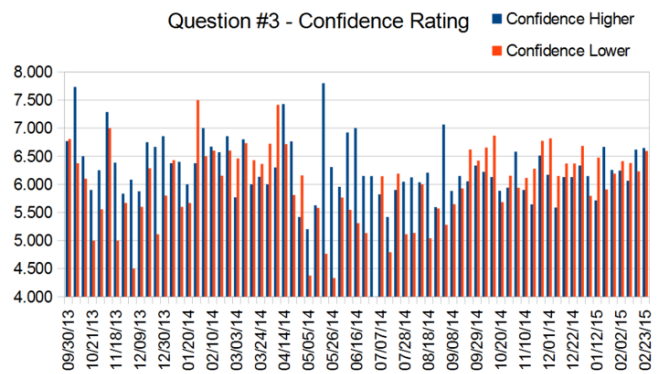
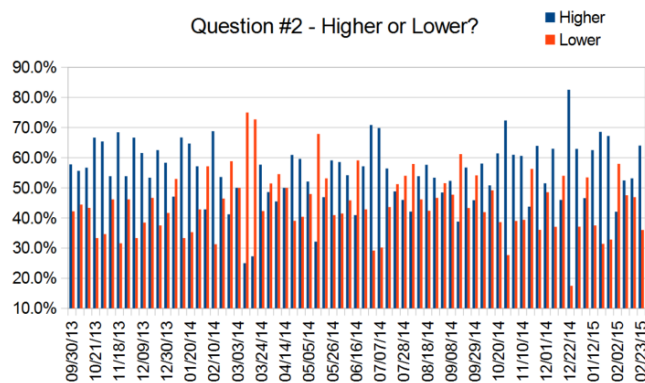
Higher: 64.0%
Lower: 36.0%

Question #3. Rate your confidence in your answer to Question #2 on a scale of 0 to 10 (with 0 being no confidence and 10 being extremely confident).

Average of All Responses: 6.627
Average For "Higher" Responses: 6.646
Average For "Lower" Responses: 6.593

Responses Submitted This Week: 75

Brief Analysis: The slight bullishness of last week turned to to be correct as the S&P500 ended 0.66% higher for the short trading week. This week's sentiment has shifted to a much stronger bullish position, the strongest in several weeks, but with almost the exact same average confidence level on both sides.



Raw Data Page (raw data files include full history spreadsheet and the above charts):
TimingResearch.com/rawdata.

Full Weekly Results (full version of this chart available in the [raw data](#) spreadsheet for this week, "Date" field below lists the Monday of the week being predicted).

Correct Percentage: 47.1%

	Date	Higher	Lower	H/L Diff	Avg Confidence	Confidence Higher	Confidence Lower	Con Diff	Guess	Actual	Correct?
1	09/30/13	57.8%	42.2%	15.6%	6.784	6.769	6.806	-0.037	Higher	Lower	No
2	10/07/13	55.7%	44.4%	11.2%	7.130	7.733	6.375	1.358	Higher	Higher	Yes
3	10/14/13	56.7%	43.3%	13.3%	6.300	6.500	6.100	0.400	Higher	Higher	Yes
4	10/21/13	66.7%	33.3%	33.3%	5.600	5.900	5.000	0.900	Higher	Higher	Yes
5	10/28/13	65.4%	34.6%	30.8%	6.000	6.250	5.556	0.694	Higher	Higher	Yes
7	11/11/13	53.9%	46.2%	7.7%	7.154	7.286	7.000	0.286	Higher	Higher	Yes
8	11/18/13	68.4%	31.6%	36.8%	6.000	6.385	5.000	1.385	Higher	Higher	Yes
9	11/25/13	53.9%	46.2%	7.7%	5.750	5.833	5.667	0.166	Higher	Lower	No
10	12/02/13	66.7%	33.3%	33.3%	5.556	6.083	4.500	1.583	Higher	Lower	No
11	12/09/13	61.5%	38.5%	23.1%	5.769	5.875	5.600	0.275	Higher	Lower	No
12	12/16/13	53.3%	46.7%	6.7%	6.533	6.750	6.286	0.464	Higher	Higher	Yes
13	12/23/13	62.5%	37.5%	25.0%	6.083	6.667	5.111	1.556	Higher	Higher	Yes
14	12/30/13	58.3%	41.7%	16.7%	6.417	6.857	5.800	1.057	Higher	Lower	No
15	01/06/14	47.1%	52.9%	-5.9%	6.400	6.375	6.429	-0.054	Lower	Higher	No
16	01/13/14	66.7%	33.3%	33.4%	6.400	6.130	5.600	0.530	Higher	Lower	No
17	01/20/14	64.7%	35.3%	29.4%	5.875	6.000	5.667	0.333	Higher	Lower	No
18	01/27/14	57.1%	42.9%	14.3%	6.857	6.375	7.500	-1.125	Higher	Lower	No
19	02/03/14	42.9%	57.1%	-14.3%	6.706	7.000	6.500	0.500	Lower	Higher	No
20	02/10/14	68.8%	31.3%	37.6%	6.640	6.670	6.600	0.070	Higher	Higher	Yes
21	02/17/14	53.6%	46.4%	7.1%	6.370	6.571	6.154	0.417	Higher	Lower	No
22	02/24/14	41.2%	58.8%	-17.6%	6.706	6.857	6.600	0.257	Lower	Higher	No
23	03/03/14	50.0%	50.0%	0.0%	6.115	5.769	6.462	-0.693	Lower	Higher	N/A
24	03/10/14	25.0%	75.0%	-50.0%	6.750	6.800	6.733	0.067	Lower	Lower	Yes
25	03/17/14	27.3%	72.7%	-45.5%	6.300	6.000	6.429	-0.429	Lower	Higher	No
26	03/24/14	57.7%	42.3%	15.4%	6.231	6.133	6.364	-0.231	Higher	Lower	No
27	03/31/14	48.6%	51.4%	-2.9%	6.371	6.000	6.722	-0.722	Lower	Higher	No
28	04/07/14	45.5%	54.5%	-9.1%	6.909	6.300	7.417	-1.117	Lower	Lower	Yes
29	04/14/14	50.0%	50.0%	0.0%	7.071	7.429	6.714	0.715	Lower	Higher	N/A
30	04/21/14	60.9%	39.1%	21.9%	6.388	6.764	5.810	0.954	Higher	Lower	No
31	04/28/14	59.6%	40.4%	19.2%	5.700	5.419	6.158	-0.739	Higher	Higher	Yes
32	05/05/14	52.1%	47.9%	4.2%	4.796	5.200	4.375	0.825	Higher	Lower	No
33	05/12/14	32.1%	67.9%	-35.7%	5.593	5.625	5.579	0.046	Lower	Lower	Yes
34	05/19/14	46.9%	53.1%	-6.3%	6.188	7.800	4.765	3.035	Lower	Higher	No
35	05/26/14	59.1%	40.9%	18.2%	5.500	6.308	4.333	1.975	Higher	Higher	Yes
36	06/02/14	58.5%	41.5%	17.1%	5.875	5.957	5.765	0.192	Higher	Higher	Yes
37	06/09/14	54.2%	45.8%	8.3%	6.292	6.923	5.545	1.378	Higher	Lower	No
38	06/16/14	40.9%	59.1%	-18.2%	6.000	7.000	5.308	1.692	Lower	Higher	No
39	06/23/14	57.1%	42.9%	14.3%	5.714	6.150	5.133	1.017	Higher	Lower	No
40	06/30/14	70.8%	29.2%	41.7%	5.521	6.147	4.000	2.147	Higher	Higher	Yes
41	07/07/14	69.8%	30.2%	39.7%	5.920	5.920	6.143	-0.322	Higher	Lower	No
42	07/14/14	56.4%	43.6%	12.8%	5.145	5.419	4.792	0.627	Higher	Higher	Yes
43	07/21/14	48.8%	51.2%	-2.4%	6.049	5.900	6.190	-0.290	Lower	Higher	No
44	07/28/14	46.0%	54.0%	-8.0%	5.531	6.045	5.111	0.934	Lower	Lower	Yes
45	08/04/14	42.1%	57.9%	-15.8%	5.553	6.125	5.136	0.989	Lower	Higher	No
46	08/11/14	53.8%	46.2%	7.7%	6.019	6.036	6.000	0.036	Higher	Higher	Yes
47	08/18/14	57.6%	42.4%	15.3%	5.712	6.206	5.040	1.166	Higher	Higher	Yes
48	08/25/14	53.3%	46.7%	6.7%	5.583	5.594	5.571	0.023	Higher	Higher	Yes
49	09/01/14	48.5%	51.5%	-3.1%	6.144	7.064	5.280	1.784	Lower	Higher	No
50	09/08/14	52.3%	47.7%	4.6%	5.769	5.882	5.645	0.237	Higher	Lower	No
51	09/15/14	38.8%	61.2%	-22.4%	6.015	6.148	5.927	0.221	Lower	Higher	No
52	09/22/14	56.7%	43.3%	13.4%	6.299	6.053	6.621	-0.568	Higher	Lower	No
53	09/29/14	45.9%	54.1%	-8.2%	6.381	6.333	6.422	-0.089	Lower	Lower	Yes
54	10/06/14	58.1%	41.9%	16.1%	6.403	6.222	6.654	-0.432	Higher	Lower	No
55	10/13/14	50.8%	49.2%	1.6%	6.492	6.129	6.867	-0.738	Higher	Lower	No
56	10/20/14	61.4%	38.6%	22.8%	5.807	5.886	5.682	0.204	Higher	Higher	Yes
57	10/27/14	72.3%	27.7%	44.7%	6.000	5.941	6.154	-0.213	Higher	Higher	Yes
58	11/03/14	61.0%	39.0%	22.0%	6.329	6.580	5.938	0.642	Higher	Higher	Yes
59	11/10/14	60.6%	39.4%	21.2%	5.985	5.900	6.115	-0.215	Higher	Higher	Yes
60	11/17/14	43.8%	56.3%	-12.5%	6.000	5.643	6.278	-0.635	Lower	Higher	No
61	11/24/14	63.9%	36.1%	27.9%	6.607	6.513	6.773	-0.260	Higher	Higher	Yes
62	12/01/14	51.5%	48.5%	2.9%	6.485	6.171	6.818	-0.647	Higher	Higher	Yes
63	12/08/14	63.0%	37.0%	25.9%	5.796	5.588	6.150	-0.562	Higher	Lower	No
64	12/15/14	46.0%	54.0%	-8.0%	6.260	6.130	6.370	-0.240	Lower	Higher	No
65	12/22/14	82.5%	17.5%	65.1%	6.260	6.130	6.370	-0.240	Higher	Higher	Yes
66	12/29/14	62.9%	37.1%	25.8%	6.448	6.333	6.684	-0.351	Higher	Lower	No
67	01/05/15	46.6%	53.4%	-6.8%	5.959	6.147	5.795	0.352	Lower	Lower	Yes
68	01/12/15	62.5%	37.5%	25.0%	6.000	5.714	6.476	-0.762	Higher	Lower	No
69	01/19/15	68.6%	31.4%	37.1%	6.429	6.667	5.909	0.758	Higher	Higher	Yes
70	01/26/15	67.2%	32.8%	34.4%	6.234	6.256	6.190	0.066	Higher	Lower	No
71	02/02/15	42.0%	58.0%	-15.9%	6.341	6.243	6.412	-0.169	Lower	Higher	No
72	02/09/15	52.5%	47.5%	4.9%	6.213	6.063	6.379	-0.316	Higher	Higher	Yes
73	02/16/15	53.1%	46.9%	6.3%	6.438	6.618	6.233	0.385	Higher	Higher	Yes
74	02/23/15	64.0%	36.0%	28.0%	6.627	6.646	6.593	0.053	???	???	???

Weekly Reports Page: TimingResearch.com/reports

Raw Data Page: TimingResearch.com/rawdata

Current Survey Page: TimingResearch.com/currentsurvey

Any feedback email: news@timingresearch.com

Copyright TimingResearch.com 2015

Be sure you are registered at TimingResearch.com to participate and receive the weekly updates. - page 2/6

NOTE: The following open-ended answers are solely the opinions of the anonymous responders to this survey. Responses are mostly unedited, but some have been reformatted slightly for to make them easier to read. Some useless/irrelevant responses (e.g. "none") have been omitted. All responses for each week, unedited, are available in the raw data spreadsheets at TimingResearch.com/rawdata.

Question #1. What developing events (technical or fundamental) will you be watching out for next week (February 23-27) that might have a positive or negative impact on the S&P 500 and other US markets?

- Cycles are calling for up this coming week
- ECB
- we are at the old high (SP cash) and there is bearish divergence in momentum plus a volume study is indicating a short term minor pullback
- new high fake out
- Greece, Earnings
- Possible terrorist activity in this country
- Housing data, consumer confidence, Greece & Ukraine
- Middle east
- Month end window dressing
- Nasdaq hitting/breaking 5000.
- Euro and Greece settlement will be positive
- NASDAQ all time high, Russia/Ukraine escalation.
- NASDAQ all time high, Russia/Ukraine escalation.
- Germany's GDP (Q4), Eurostat CPI Index (YoY), Eurozone CPI Index (YoY), ECB President Draghe's Speech on Tuesday, USA Consumer Confidence 100, Fed's Yellen Testifies on Tuesday, the unemployment change and rate in Germany, USA Double Goods Order, the USA GDP(Q4),(YoY),and (QoQ).
- Oil and Gold prices,
- Ukraine situation
- Trading Volume, Volatility, Breakout Strategies, Greece, Putin
- price of oil
- Technical 2100 level in SPX
- Port dock workers USA
- Fed speech
- sideway end of week down with pop coming early next week not hard to read the don't wait are good for premiums!
- As long as 2061 holds including retests, is a positive for the MK
- oil, Ukraine, and Greece
- Economic releases.
- cpi yellen case shiller
- Euro greece oil
- world events
- declining earnings
- Europe vs Russia
- earnings
- oil and bond prices for clue to next move
- Greece, Europe, oil, ISIS. Right now things are a little quieter than normal, that may change

- by Monday.
- "Greece
Stock Market exhaustion"
- VIX.
- Greek talk collapse, some positive domestic report
- Open Of The Month On The indexes.
- Situation in Greece.
- Price
- as always, FED reports, any change in interest rates, news from oil producing regions and news on terrorists activity.
- spy making new highs
- "Greek
Yellen Speaks"
- Earnings. Greece
- Greece is just delaying the inevitable, Germany is going to pay?, just to loose more money, the real threat is Ruussia and I think Merkel is playing the role of Chamberlain
- Greek debt issue, interest rate developments, shipping problems in los angeles,
- End of the month.
- Technical
- "imposition of sanctions on Russia
US - Iranian nuclear talks
Fed policy statement, if any."
- New high in the AD Line
- Europe Russia Greece
- Greece and Ukraine
- isis
- Euro crisis
- Greece, Oil, Yellen, Putin. Expecting consolidation - as of now, SPY options pricing in about a 1.1% move for next week - expecting less volatility.
- Technicals say we move lower.
- Greece Russia ISIS oil movements

Question #4: Technical Problem

TimingResearch Message: I made a mistake this week and did not properly update Question #4 to the new question on the survey page, it remained as the “coming soon” message throughout the survey period. It has been corrected with a new question for this coming week's survey. -David

- Alternate energy growth
- Resistance at NDQ all-time high but briefly since there aren't many folks still in the game from them waiting to be back to even.
- NASDAQ 5000.
- NASDAQ 5000.
- Not sure what this means
- Jobs report and fed economic analysis
- market crash
- Watch out.
- ok
- 2 keys 1 politics 1 institutions , get right on the growth of age to the cost of being born, how many trees when bushes are needed to hide from Obama's hat and head shop!
- 2200 over next 1-2 weeks
- To a chart near you...?
- economic news
- Income taxesew will be within reasonable level and investors will get positive about investments
- More companies to raise wages above minimum.
- what the US will do on the Syrian terrorist problems, The US debt continued resolution at the Congress will it be approved?
- More BS up mkt moves
- S&P higher then lower
- market adjustment
- correction

Question #5: Comments/Questions/Suggestions?

Thank you for all the feedback, feel free to [contact us](#) at any time with any other questions or comments.

- been here before with the markets at all time high and recent extreme bullish moves looking for some bad news from somewhere to hit this market hard for a short period, might not be for a few days but should happen!
- What is keeping precious metal prices range bound
- Should surprise everyone if it keeps rising.
- Are there any Bear Minded Billionaires, Market Cycle Billionaires, Elliot Wave Billionaires?
- ok
- options to dance sell the puts!
- Does anyone know the reaction time investors react to good news?
Or bad news? How big is the gap to these reactions?
- With interest rates on the upswing will Utility stock be a good option?
- be wary
- caution
- Lots of positive and negative news everywhere with justification.... Who is believable and who is not. In media context, the negative news always / almost win as it draws more attention from the public.