

TimingResearch Crowd Forecast Newsletter (Beta)

Week 79 – 03/29/15 Report

Open-ended responses for Questions #1, #4, and #5 start on page 3.

Question #2. Based on any technical or fundamental indicators you want to use, would you predict that the S&P 500 index will move higher or lower next week? (from Monday's open to Friday's close; March 30 - April 3)

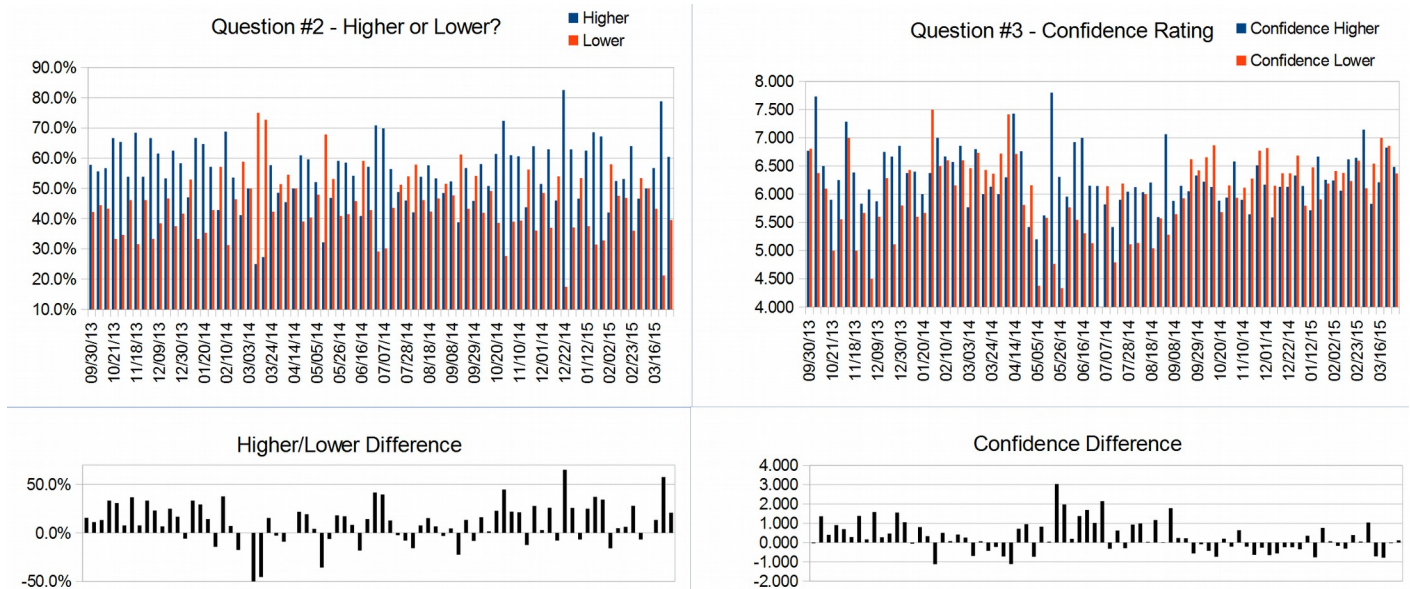
Higher: 60.4%
Lower: 39.6%

Question #3. Rate your confidence in your answer to Question #2 on a scale of 0 to 10 (with 0 being no confidence and 10 being extremely confident).

Average of All Responses: 6.438
Average For "Higher" Responses: 6.483
Average For "Lower" Responses: 6.368

Responses Submitted This Week: 48

Brief Analysis: Last week's bullish sentiment was incorrect as the market fell 2.23%. Despite the major drop, bullishness continues this week with just over 60% of respondents choosing "Higher." Average confidence is almost even again this week with a slight edge to those predicting "Higher."



Raw Data Page (raw data files include full history spreadsheet and the above charts):
TimingResearch.com/rawdata.

Full Weekly Results (full version of this chart available in the [raw data](#) spreadsheet for this week, "Date" field below lists the Monday of the week being predicted).

Correct Percentage: 47.3%

	Date	Higher	Lower	H/L Diff	Avg Confidence	Confidence Higher	Confidence Lower	Con Diff	Guess	Actual	Correct?
1	09/30/13	57.8%	42.2%	15.6%	6.784	6.769	6.806	-0.037	Higher	Lower	No
2	10/07/13	55.7%	44.4%	11.2%	7.130	7.733	6.375	1.358	Higher	Higher	Yes
3	10/14/13	56.7%	43.3%	13.3%	6.300	6.500	6.100	0.400	Higher	Higher	Yes
4	10/21/13	66.7%	33.3%	33.3%	5.600	5.900	5.000	0.900	Higher	Higher	Yes
5	10/28/13	65.4%	34.6%	30.8%	6.000	6.250	5.556	0.694	Higher	Higher	Yes
7	11/11/13	53.9%	46.2%	7.7%	7.154	7.286	7.000	0.286	Higher	Higher	Yes
8	11/18/13	68.4%	31.6%	36.8%	6.000	6.385	5.000	1.385	Higher	Higher	Yes
9	11/25/13	53.9%	46.2%	7.7%	5.750	5.833	5.667	0.166	Higher	Lower	No
10	12/02/13	66.7%	33.3%	33.3%	5.556	6.083	4.500	1.583	Higher	Lower	No
11	12/09/13	61.5%	38.5%	23.1%	5.769	5.875	5.600	0.275	Higher	Lower	No
12	12/16/13	53.3%	46.7%	6.7%	6.533	6.750	6.286	0.464	Higher	Higher	Yes
13	12/23/13	62.5%	37.5%	25.0%	6.083	6.667	5.111	1.556	Higher	Higher	Yes
14	12/30/13	58.3%	41.7%	16.7%	6.417	6.857	5.800	1.057	Higher	Lower	No
15	01/06/14	47.1%	52.9%	-5.9%	6.400	6.375	6.429	-0.054	Lower	Higher	No
16	01/13/14	66.7%	33.3%	33.4%	6.130	6.400	5.600	0.800	Higher	Lower	No
17	01/20/14	64.7%	35.3%	29.4%	5.875	6.000	5.667	0.333	Higher	Lower	No
18	01/27/14	57.1%	42.9%	14.3%	6.857	6.375	7.500	-1.125	Higher	Lower	No
19	02/03/14	42.9%	57.1%	-14.3%	6.706	7.000	6.500	0.500	Lower	Higher	No
20	02/10/14	68.8%	31.3%	37.6%	6.640	6.670	6.600	0.070	Higher	Higher	Yes
21	02/17/14	53.6%	46.4%	7.1%	6.370	6.571	6.154	0.417	Higher	Lower	No
22	02/24/14	41.2%	58.8%	-17.6%	6.706	6.857	6.600	0.257	Lower	Higher	No
23	03/03/14	50.0%	50.0%	0.0%	6.115	5.769	6.462	-0.693	N/A	Higher	N/A
24	03/10/14	25.0%	75.0%	-50.0%	6.750	6.800	6.733	0.067	Lower	Lower	Yes
25	03/17/14	27.3%	72.7%	-45.5%	6.300	6.000	6.429	-0.429	Lower	Higher	No
26	03/24/14	57.7%	42.3%	15.4%	6.231	6.133	6.364	-0.231	Higher	Lower	No
27	03/31/14	48.6%	51.4%	-2.9%	6.371	6.000	6.722	-0.722	Lower	Higher	No
28	04/07/14	45.5%	54.5%	-9.1%	6.909	6.300	7.417	-1.117	Lower	Lower	Yes
29	04/14/14	50.0%	50.0%	0.0%	7.071	7.429	6.714	0.715	N/A	Higher	N/A
30	04/21/14	60.9%	39.1%	21.9%	6.388	6.764	5.810	0.954	Higher	Lower	No
31	04/28/14	59.6%	40.4%	19.2%	5.700	5.419	6.158	-0.739	Higher	Higher	Yes
32	05/05/14	52.1%	47.9%	4.2%	4.796	5.200	4.375	0.825	Higher	Lower	No
33	05/12/14	32.1%	67.9%	-35.7%	5.593	5.625	5.579	0.046	Lower	Lower	Yes
34	05/19/14	46.9%	53.1%	-6.3%	6.188	7.800	4.765	3.035	Lower	Higher	No
35	05/26/14	59.1%	40.9%	18.2%	5.500	6.308	4.333	1.975	Higher	Higher	Yes
36	06/02/14	58.5%	41.5%	17.1%	5.875	5.957	5.765	0.192	Higher	Higher	Yes
37	06/09/14	54.2%	45.8%	8.3%	6.292	6.923	5.545	1.378	Higher	Lower	No
38	06/16/14	40.9%	59.1%	-18.2%	6.000	7.000	5.308	1.692	Lower	Higher	No
39	06/23/14	57.1%	42.9%	14.3%	5.714	6.150	5.133	1.017	Higher	Lower	No
40	06/30/14	70.8%	29.2%	41.7%	5.521	6.147	4.000	2.147	Higher	Higher	Yes
41	07/07/14	69.8%	30.2%	39.7%	5.920	5.821	6.143	-0.322	Higher	Lower	No
42	07/14/14	56.4%	43.6%	12.8%	5.145	5.419	4.792	0.627	Higher	Higher	Yes
43	07/21/14	48.8%	51.2%	-2.4%	6.049	5.900	6.190	-0.290	Lower	Higher	No
44	07/28/14	46.0%	54.0%	-8.0%	5.531	6.045	5.111	0.934	Lower	Lower	Yes
45	08/04/14	42.1%	57.9%	-15.8%	5.553	6.125	5.136	0.989	Lower	Higher	No
46	08/11/14	53.8%	46.2%	7.7%	6.019	6.036	6.000	0.036	Higher	Higher	Yes
47	08/18/14	57.6%	42.4%	15.3%	5.712	6.206	5.040	1.166	Higher	Higher	Yes
48	08/25/14	53.3%	46.7%	6.7%	5.583	5.594	5.571	0.023	Higher	Higher	Yes
49	09/01/14	48.5%	51.5%	-3.1%	6.144	7.064	5.280	1.784	Lower	Higher	No
50	09/08/14	52.3%	47.7%	4.6%	5.769	5.882	5.645	0.237	Higher	Lower	No
51	09/15/14	38.8%	61.2%	-22.4%	6.015	6.148	5.927	0.221	Lower	Higher	No
52	09/22/14	56.7%	43.3%	13.4%	6.299	6.053	6.621	-0.568	Higher	Lower	No
53	09/29/14	45.9%	54.1%	-8.2%	6.333	6.422	6.422	-0.089	Lower	Lower	Yes
54	10/06/14	58.1%	41.9%	16.1%	6.403	6.222	6.654	-0.432	Higher	Lower	No
55	10/13/14	50.8%	49.2%	1.6%	6.492	6.129	6.867	-0.738	Higher	Lower	No
56	10/20/14	61.4%	38.6%	22.8%	5.886	5.886	5.682	0.204	Higher	Higher	Yes
57	10/27/14	72.3%	27.7%	44.7%	6.000	5.941	6.154	-0.213	Higher	Higher	Yes
58	11/03/14	61.0%	39.0%	22.0%	6.329	6.580	5.938	0.642	Higher	Higher	Yes
59	11/10/14	60.6%	39.4%	21.2%	5.985	5.900	6.115	-0.215	Higher	Higher	Yes
60	11/17/14	43.8%	56.3%	-12.5%	6.000	5.643	6.278	-0.635	Lower	Higher	No
61	11/24/14	63.9%	36.1%	27.9%	6.607	6.513	6.773	-0.260	Higher	Higher	Yes
62	12/01/14	51.5%	48.5%	2.9%	6.485	6.171	6.818	-0.647	Higher	Higher	Yes
63	12/08/14	63.0%	37.0%	25.9%	5.796	5.588	6.150	-0.562	Higher	Lower	No
64	12/15/14	46.0%	54.0%	-8.0%	6.260	6.130	6.370	-0.240	Lower	Higher	No
65	12/22/14	82.5%	17.5%	65.1%	6.260	6.130	6.370	-0.240	Higher	Higher	Yes
66	12/29/14	62.9%	37.1%	25.8%	6.448	6.333	6.684	-0.351	Higher	Lower	No
67	01/05/15	46.6%	53.4%	-6.8%	5.959	6.147	5.795	0.352	Lower	Lower	Yes
68	01/12/15	62.5%	37.5%	25.0%	6.000	5.714	6.476	-0.762	Higher	Lower	No
69	01/19/15	68.6%	31.4%	37.1%	6.429	6.667	5.909	0.758	Higher	Higher	Yes
70	01/26/15	67.2%	32.8%	34.4%	6.234	6.256	6.190	0.066	Higher	Lower	No
71	02/02/15	42.0%	58.0%	-15.9%	6.341	6.243	6.412	-0.169	Lower	Higher	No
72	02/09/15	52.5%	47.5%	4.9%	6.213	6.063	6.379	-0.316	Higher	Higher	Yes
73	02/16/15	53.1%	46.9%	6.3%	6.438	6.618	6.233	0.385	Higher	Higher	Yes
74	02/23/15	64.0%	36.0%	28.0%	6.627	6.646	6.593	0.053	Higher	Lower	No
75	03/02/15	46.6%	53.4%	-6.8%	6.591	7.146	6.106	1.040	Lower	Lower	Yes
76	03/09/15	50.0%	50.0%	0.0%	6.186	5.829	6.543	-0.714	N/A	Lower	N/A
77	03/16/15	56.7%	43.3%	13.4%	6.552	6.211	7.000	-0.789	Higher	Higher	Yes
78	03/23/15	78.8%	21.2%	57.6%	6.833	6.827	6.857	-0.030	Higher	Lower	No
79	03/30/15	60.4%	39.6%	20.8%	6.438	6.483	6.368	0.115	???	???	???

Weekly Reports Page: TimingResearch.com/reports

Raw Data Page: TimingResearch.com/rawdata

Current Survey Page: TimingResearch.com/currentsurvey

Any feedback email: news@timingresearch.com

NOTE: The following open-ended answers are solely the opinions of the anonymous responders to this survey. Responses are mostly unedited, but some have been reformatted slightly for to make them easier to read and are listed in order of submission. Some useless/irrelevant responses (e.g. "none") have been omitted. All responses for each week, unedited, are available in the raw data spreadsheets at TimingResearch.com/rawdata.

Question #1. What developing events (technical or fundamental) will you be watching out for next week (March 30 - April 3) that might have a positive or negative impact on the S&P 500 and other US markets?

- Technically the market seems weak to me. Fundamentally the market is in need of a pullback to clear people's minds.
- "Employment situation report
Greek negotiation with Germany
Short trading week
End of quarter machinations"
- The Nasdaq appears to have formed an Elliott wave 2/A-B-C correction. Along with a low in the daily and weekly RSI, which typically signals a bottom or near bottom.
- "GDP US growth.
Earnings forecast"
- 200 day MA on S&P, Non farm payroll
- technical
- Mideast War
- Oil, Yemen, Iran, market technicals
- Dollar and oil.
- Market cycles, earnings warnings, end of month window dressing and profit taking, oil pricing, dollar increase/decrease
- GOLD and VIX.
- Chicago PMI & S&P case ? Schiller HPI
- Realization that earnings can go lower,, quarter on quarter, a phenomenon not seen for years.
- Mid east
- possible bounce for Weekly support level, and then down.
- Watching that the E-mini mkt stays below 2073
- crb indexes weak more deflationary pressure
- None, Easter holiday.
- Employment
- 401k deployment and monthly cycle favouring the first few days of the month
- "Euro vs Dollars
Vix"
- oil,
- political drama in Yemen will drop spx between 10-15% over next 2-3 months
- Oil prices and dollar.
- Inside week, slightly up over last - net on week < 1% movement.
- cycles ending in the Fri-Monday 3/27-3/30 time period
- see if the sp is able to rebound at these levels with quarter end

- Yemen/oil and gold prices
- SPY 200 day average, Middle East wars, earnings, USO
- Fed statements
- Lots of data releases - ADP, NFPs - could be volatile altho short Easter week. Will good news continue to be bad for equities?
- Military conflicts

Question #4. What sectors/industries are you most excited about for long-term market growth and why?

- Biotech is where the progress will be because that is where the technology may help people directly
- bonds
- "Semiconductors
Systems security companies
Pharmaceuticals and Biotech
Mobile computing"
- Pharmaceuticals, I anticipate significant advances in cancer and Alzheimer treatments.
- "Biotech
Technology"
- Health Care, Tech
- consumer staples
- Health care because of aging boomers
- Health, tech, robotics and biotech. Government mandates, efficiencies and genetics.
- housing shortage
- Biotech, Hi-Tech because of potential growth
- Biotech - lots of new effective drugs in the pipe.
- tech, oil & gas
- Healthcare
- Oil
- biotech
- Personal Protection, for obvious reasons
- gold miners long term technicals look strong dollar is correcting
- Industrials, technical approach
- I will be buying energy after the next dip to around \$35 oil
- Energy near bottom?
- healthcare and tech
- Medical-I want to get some of the money back in stock investments, that's going to make me broke in old age. Technical - always has something new.
- Healthcare (Obamacare will drive revenues). Internet security vendors. Sooner or later marijuana stocks are going 'higher'...
- Biotech to continue leadership since not affected by broader economic conditions
- Energy. Rotation into renewable sources should continue with rising demand albeit at a slower pace.
- Technology and Energy
- energy, if the next administration does not get in the way the US is finally the world leader in production. This means lower costs The single most important factor aside from less government
- Japan here we come. UDN, GLD, TLT. Watch the central banks destroy the world
- Oil, precious metals. When monetary system implodes, commodities will become new bedrock.

Question #5: Comments/Questions/Suggestions?

Thank you for all the feedback, feel free to [contact us](#) at any time with any other questions or comments.

- Will a war between Iran and Saudis come about?
- When the bear market comes, how long will it be?
- Is there an excel or cvs download for the history of higher/lower and confidence numbers?
- exiting new products, M&A fever and few blow ups
- Thanks for the effort.
- Fed needs 50 basis points by end of year
- Where do we expect to see VXX in weeks? above \$28?