

# TimingResearch Crowd Forecast Newsletter (Beta)

## Week 90 – 06/14/15 Report

Open-ended responses for Questions #1, #4, and #5 start on page 3.

**Question #2. Based on any technical or fundamental indicators you want to use, would you predict that the S&P 500 index will move higher or lower next week? (from Monday's open to Friday's close; June 15-19)**

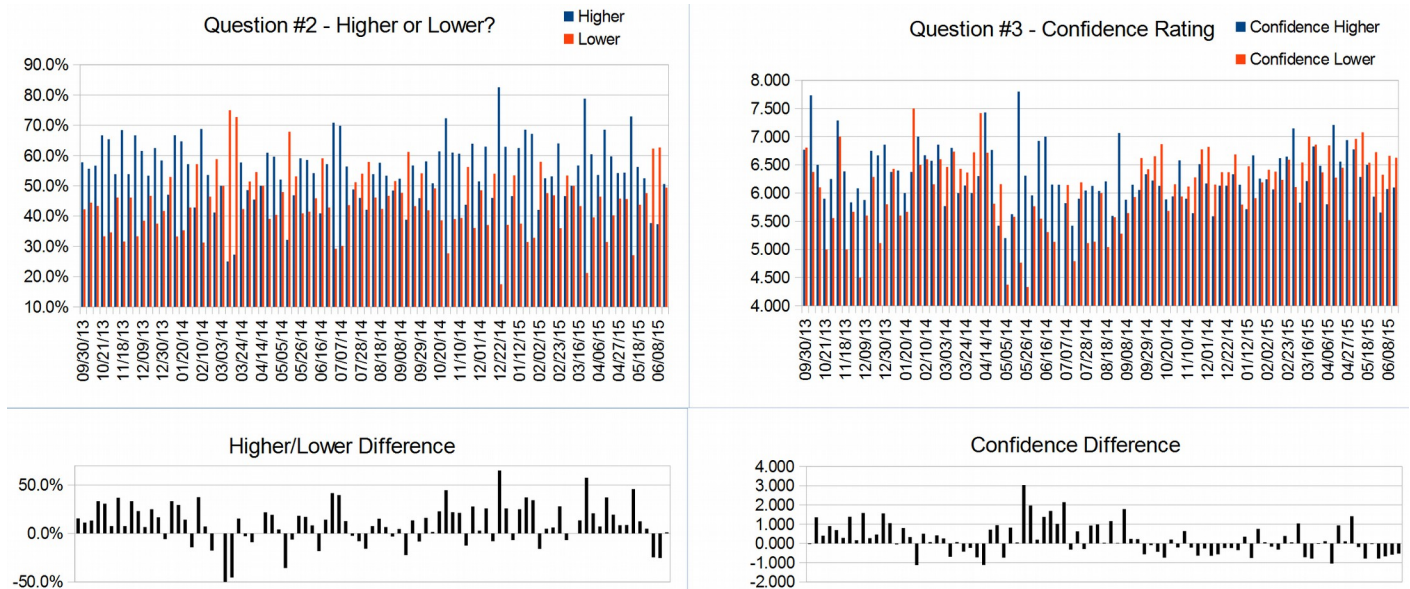
Higher: 50.6%  
Lower: 49.4%

**Question #3. Rate your confidence in your answer to Question #2 on a scale of 0 to 10 (with 0 being no confidence and 10 being extremely confident).**

Average of All Responses: 6.440  
Average For "Higher" Responses: 6.071  
Average For "Lower" Responses: 6.660

**Responses Submitted This Week: 81**

**Brief Analysis:** The overall bearish sentiment from last week turned out to be false as the S&P500 closed up a just 0.08% for the week. This week the sentiment is almost exactly even but slightly on the bullish side. Average confidence remains higher for those predicting a declining week.



Raw Data Page (raw data files include full history spreadsheet and the above charts):  
[TimingResearch.com/rawdata](http://TimingResearch.com/rawdata).

Full Weekly Results (full version of this chart available in the [raw data](#) spreadsheet for this week, "Date" field below lists the Monday of the week being predicted).

Correct Percentage: 49.4%

	Date	Higher	Lower	H/L Diff	Avg Confidence	Confidence Higher	Confidence Lower	Con Diff	Guess	Actual	Correct?
1	09/30/13	57.9%	42.2%	15.6%	6.754	6.769	6.806	-0.037	Higher	Lower	No
2	10/07/13	55.7%	44.4%	11.3%	7.130	7.733	6.375	1.358	Higher	Higher	Yes
3	10/14/13	56.7%	43.3%	13.3%	6.300	6.500	6.100	0.400	Higher	Higher	Yes
4	10/21/13	66.7%	33.3%	33.3%	5.600	5.900	5.000	0.900	Higher	Higher	Yes
5	10/28/13	65.4%	34.6%	30.8%	6.000	6.250	5.556	0.694	Higher	Higher	Yes
7	11/11/13	53.9%	46.2%	7.7%	7.154	7.286	7.000	0.286	Higher	Higher	Yes
8	11/18/13	68.4%	31.6%	36.8%	6.000	6.385	5.000	1.385	Higher	Higher	Yes
9	11/25/13	53.9%	46.2%	7.7%	5.750	5.833	5.667	0.166	Higher	Lower	No
10	12/02/13	66.7%	33.3%	33.3%	5.556	6.083	4.500	1.583	Higher	Lower	No
11	12/09/13	61.5%	38.5%	23.1%	5.769	5.875	5.600	0.275	Higher	Lower	No
12	12/16/13	53.3%	46.7%	6.7%	6.533	6.750	6.286	0.464	Higher	Higher	Yes
13	12/23/13	62.5%	37.5%	25.0%	6.083	6.667	5.111	1.556	Higher	Higher	Yes
14	12/30/13	58.3%	41.7%	16.7%	6.417	6.857	5.800	1.057	Higher	Lower	No
15	01/06/14	47.1%	52.9%	-5.9%	6.400	6.375	6.429	-0.054	Lower	Higher	No
16	01/13/14	66.7%	33.3%	33.4%	6.130	6.400	5.600	0.800	Higher	Lower	No
17	01/20/14	64.7%	35.3%	29.4%	5.875	6.000	5.667	0.333	Higher	Lower	No
18	01/27/14	57.1%	42.9%	14.3%	6.857	6.375	7.500	-1.125	Higher	Lower	No
19	02/03/14	42.9%	57.1%	-14.3%	6.706	7.000	6.500	0.500	Lower	Higher	No
20	02/10/14	68.8%	31.3%	37.6%	6.640	6.670	6.600	0.070	Higher	Higher	Yes
21	02/17/14	53.6%	46.4%	7.1%	6.370	6.571	6.154	0.417	Higher	Lower	No
22	02/24/14	41.2%	58.8%	-17.6%	6.706	6.857	6.600	0.257	Lower	Higher	No
23	03/03/14	50.0%	50.0%	0.0%	6.115	5.769	6.462	-0.693	N/A	Higher	N/A
24	03/10/14	25.0%	75.0%	-50.0%	6.750	6.800	6.733	0.067	Lower	Lower	Yes
25	03/17/14	27.3%	72.7%	-45.5%	6.300	6.000	6.429	-0.429	Lower	Higher	No
26	03/24/14	57.7%	42.3%	15.4%	6.231	6.133	6.364	-0.231	Higher	Lower	No
27	03/31/14	48.6%	51.4%	-2.9%	6.371	6.000	6.722	-0.722	Lower	Higher	No
28	04/07/14	45.5%	54.5%	-9.1%	6.909	6.300	7.417	-1.117	Lower	Lower	Yes
29	04/14/14	50.0%	50.0%	0.0%	7.071	7.429	6.714	0.714	N/A	Higher	N/A
30	04/21/14	60.9%	39.1%	21.9%	6.388	6.764	6.810	0.954	Higher	Lower	No
31	04/28/14	59.6%	40.4%	19.2%	5.700	5.419	6.158	-0.739	Higher	Higher	Yes
32	05/05/14	52.1%	47.9%	4.2%	4.796	5.200	4.375	0.825	Higher	Lower	No
33	05/12/14	32.1%	67.9%	-35.7%	5.593	5.625	5.579	0.046	Lower	Lower	Yes
34	05/19/14	46.9%	53.1%	-6.3%	6.188	7.800	4.765	3.035	Lower	Higher	No
35	05/26/14	59.1%	40.9%	18.2%	5.500	6.308	4.333	1.975	Higher	Higher	Yes
36	06/02/14	58.5%	41.5%	17.1%	5.875	5.957	5.765	0.192	Higher	Higher	Yes
37	06/09/14	54.2%	45.8%	8.3%	6.292	6.923	5.545	1.378	Higher	Lower	No
38	06/16/14	40.9%	59.1%	-18.2%	6.000	7.000	5.308	1.692	Lower	Higher	No
39	06/23/14	57.1%	42.9%	14.3%	5.714	6.150	5.133	1.017	Higher	Lower	No
40	06/30/14	70.8%	29.2%	41.7%	5.521	6.147	4.000	2.147	Higher	Higher	Yes
41	07/07/14	69.8%	30.2%	39.7%	5.920	5.821	6.143	-0.322	Higher	Lower	No
42	07/14/14	56.4%	43.6%	12.8%	5.145	5.419	4.792	0.627	Higher	Higher	Yes
43	07/21/14	48.8%	51.2%	-2.4%	6.049	5.900	6.190	-0.290	Lower	Higher	No
44	07/28/14	46.0%	54.0%	-8.0%	5.531	6.045	5.111	0.934	Lower	Lower	Yes
45	08/04/14	42.1%	57.9%	-15.8%	5.553	6.125	5.136	0.989	Lower	Higher	No
46	08/11/14	53.8%	46.2%	7.7%	6.019	6.036	6.000	0.036	Higher	Higher	Yes
47	08/18/14	57.6%	42.4%	15.3%	5.712	6.206	5.040	1.166	Higher	Higher	Yes
48	08/25/14	53.3%	46.7%	6.7%	5.583	5.594	5.571	0.023	Higher	Higher	Yes
49	09/01/14	48.5%	51.5%	-3.1%	6.144	7.064	5.280	1.784	Lower	Higher	No
50	09/08/14	52.3%	47.7%	4.6%	5.769	5.882	5.645	0.237	Higher	Lower	No
51	09/15/14	38.8%	61.2%	-22.4%	6.015	6.148	5.927	0.221	Lower	Higher	No
52	09/22/14	56.7%	43.3%	13.4%	6.299	6.053	6.621	-0.568	Higher	Lower	No
53	09/29/14	45.9%	54.1%	-8.2%	6.381	6.333	6.422	-0.089	Lower	Lower	Yes
54	10/06/14	58.1%	41.9%	16.1%	6.403	6.222	6.654	-0.432	Higher	Lower	No
55	10/13/14	50.8%	49.2%	1.6%	6.492	6.867	6.867	-0.738	Higher	Lower	No
56	10/20/14	61.4%	38.6%	22.8%	5.807	5.886	5.807	0.204	Higher	Higher	Yes
57	10/27/14	72.3%	27.7%	44.7%	6.000	5.941	6.154	-0.213	Higher	Higher	Yes
58	11/03/14	61.0%	39.0%	22.0%	6.329	6.580	5.938	0.642	Higher	Higher	Yes
59	11/10/14	60.6%	39.4%	21.2%	5.985	5.900	6.115	-0.215	Higher	Higher	Yes
60	11/17/14	43.8%	56.3%	-12.5%	6.000	5.643	6.278	-0.635	Lower	Higher	No
61	11/24/14	63.9%	36.1%	27.9%	6.607	6.513	6.773	-0.260	Higher	Higher	Yes
62	12/01/14	51.5%	48.5%	2.9%	6.485	6.171	6.818	-0.647	Higher	Higher	Yes
63	12/08/14	63.0%	37.0%	25.9%	5.796	5.588	6.150	-0.562	Higher	Lower	No
64	12/15/14	46.0%	54.0%	-8.0%	6.260	6.130	6.370	-0.240	Lower	Higher	No
65	12/22/14	82.5%	17.5%	65.1%	6.260	6.130	6.370	-0.240	Higher	Higher	Yes
66	12/29/14	62.9%	37.1%	25.8%	6.448	6.333	6.684	-0.351	Higher	Lower	No
67	01/05/15	46.6%	53.4%	-6.8%	5.959	6.147	5.795	0.352	Lower	Lower	Yes
68	01/12/15	62.5%	37.5%	25.0%	6.000	5.714	6.476	-0.762	Higher	Lower	No
69	01/19/15	68.6%	31.4%	37.1%	6.429	6.667	5.909	0.758	Higher	Higher	Yes
70	01/26/15	67.2%	32.8%	34.4%	6.234	6.256	6.190	0.066	Higher	Lower	No
71	02/02/15	42.0%	58.0%	-15.9%	6.341	6.243	6.412	-0.169	Lower	Higher	No
72	02/09/15	52.5%	47.5%	4.9%	6.213	6.063	6.379	-0.316	Higher	Higher	Yes
73	02/16/15	53.1%	46.9%	6.3%	6.438	6.618	6.233	0.385	Higher	Higher	Yes
74	02/23/15	64.0%	36.0%	28.0%	6.627	6.646	6.593	0.053	Higher	Lower	No
75	03/02/15	46.6%	53.4%	-6.8%	6.591	7.146	6.106	1.040	Lower	Lower	Yes
76	03/09/15	50.0%	50.0%	0.0%	6.186	6.829	6.543	-0.714	N/A	Lower	N/A
77	03/16/15	56.7%	43.3%	13.4%	6.552	6.211	7.000	-0.789	Higher	Higher	Yes
78	03/23/15	78.8%	21.2%	57.6%	6.833	6.827	6.857	-0.030	Higher	Lower	No
79	03/30/15	60.4%	39.6%	20.8%	6.438	6.483	6.368	0.115	Higher	Higher	Yes
80	04/06/15	53.6%	46.4%	7.1%	6.286	5.800	6.846	-1.046	Higher	Higher	Yes
81	04/13/15	68.6%	31.4%	37.1%	6.914	7.298	6.273	0.935	Higher	Lower	No
82	04/20/15	59.7%	40.3%	19.4%	6.514	6.558	6.448	0.110	Higher	Higher	Yes
83	04/27/15	54.2%	45.8%	8.5%	6.288	6.288	5.519	1.419	Higher	Lower	No
84	05/04/15	54.4%	45.6%	8.8%	6.860	6.774	6.962	-0.188	Higher	Higher	Yes
85	05/11/15	72.9%	27.1%	45.8%	6.500	6.286	7.077	-0.791	Higher	Higher	Yes
86	05/18/15	56.3%	43.8%	12.5%	6.516	6.500	6.536	-0.036	Higher	Higher	Yes
87	05/25/15	52.5%	47.5%	4.9%	6.295	5.935	6.724	-0.789	Higher	Lower	No
88	06/01/15	37.7%	62.3%	-24.6%	6.072	5.654	6.326	-0.672	Lower	Lower	Yes
89	06/08/15	37.3%	62.7%	-25.3%	6.440	6.071	6.660	-0.589	Lower	Higher	No
90	06/15/15	50.6%	49.4%	1.2%	6.358	6.098	6.625	-0.527	???	???	???

Weekly Reports Page: [TimingResearch.com/reports](http://TimingResearch.com/reports)

Raw Data Page: [TimingResearch.com/rawdata](http://TimingResearch.com/rawdata)

Current Survey Page: [TimingResearch.com/currentsurvey](http://TimingResearch.com/currentsurvey)

Any feedback email: [news@timingresearch.com](mailto:news@timingresearch.com)

*NOTE: The following open-ended answers are solely the opinions of the anonymous responders to this survey. Responses are mostly unedited, but some have been reformatted slightly for to make them easier to read and are listed in order of submission. Some useless/irrelevant responses (e.g. "none") have been omitted. All responses for each week, unedited, are available in the raw data spreadsheets at [TimingResearch.com/rawdata](http://TimingResearch.com/rawdata).*

**Question #1. What developing events (technical or fundamental) will you be watching out for next week (June 15-19) that might have a positive or negative impact on the S&P 500 and other US markets?**

- Good news on Greece. Volatility around the Fed until the inexorable rise up begins again.
- Greece
- Movement of Dow, IWM, QQQ...
- Greece and interest rates
- Yeah, I think it will be in last three days of that week because it will reduce market indice in those days
- FED reports, news from oil producing regions, any changes to interest rates, news on terrorists activity that may cause even a short term market move.
- Greece debt negotiation
- fed comments
- Fed rate decision
- 1. FOMC
- 2. Greece
- 3. Quad witching Friday.
- Greece
- FOMC
- Greek debt
- Price action.
- GOLD.
- Greece
- The Greek Debt Crisis, and the June 17 FOMC meeting minutes and Yellen's remarks
- Fed Meeting
- Situations around the world are NOT improving, and Obama is NO help!!!
- Fed meeting and the possible interest rate hike and slowing economy.
- GREECE
- Uukraine and grexit
- greece
- need to be above 2100 for higher trend to continue.
- greek story
- I believe that the market will be going away towards the ens of the year. We are going to see a 10-15% pull back in the general market.
- fed meeting, greece drama
- DONT KNOW
- Fedspeak
- Both \$spx and \$compq are flirting with their respective 50 day AMAs. Whichever side blinks first will tell the week.
- FOMC
- fomc



- Dollar & FMOC meeting
- greece
- Fed minutes. June triple expiration. Dow transport index bear crossover.
- Greece
- greek exit from EU
- Housing starts-Tuesday FOMC forecasts-Wednesday CPI-Thursday QT options-Friday
- Griek events and financial decisions.
- stock market crash
- Fed meeting will dominate.
- sector weakness/strength  
volume buy/sell ratio
- greece
- Greece debt discussion.  
Fed reserve bank 2 day meting.
- yelen speach
- Greece, dollar, fed
- Greece bailout
- Fed meeting  
Greece
- Fed meeting  
Greece  
Debt  
Fed rate
- Greece and the FOMC meeting.
- FOMC Statement
- FOMC, ECU, Greece
- Lots of energy built up in markets that when released should result in large moves - up or down? or both? Will Greece be the trigger? My guess is eventually up. Don't fight the masters of the universe until the peasants have em on the run.
- Greece, as always and weakening in some market signals
- greece, fed, bond market

#### Question #4. What technical indicator influences your trading the most?

- resistance at SPY 212
- Price Action
- None by themselves, it's a combination or it won't work
- it is many techniques the importance among them are looking lower call price has gain high profit ,and make all possible how can I get my level estimation
- I look at several things like moving averages because I know the crowd does also but mainly I follow ICHIMOKU to stay on the correct side of the market.
- MACD
- heiken ashi
- Stochastics simple moving averages
- Volume and price. Support and resistance.
- Support and resistance
- RSI
- Pivot Points.
- Elliott Wave
- S&P Futures before each day's opening and VIX index
- RSI
- RMO & Chande Momentum
- Moving averages, MACD and proprietary momentum indicator
- MACD
- Stochastics
- Bollinger Bands
- DETREND FROM MOVING AVERAGE
- RSI
- Bollinger and rsi
- value movement
- Just levels
- williams r %
- Just looking at the market in general.
- obv moneyflow
- SHORT TERM 10 DAY MOVING AVG AND LONGER TERM 50 DAY
- daily MACDS
- TTM squeeze
- stochastics
- sma 50,100,200
- atr 4
- adx 14
- vol
- Fibs
- 55 day EMA.
- Technicals are giving me a short term buy signal. But with Greece and the Fed this week, its a pickem.
- price action
- PEG ratio
- RSI is most popular in my trading decisions.
- icimocu cloud

- RSI and MACD
- stochastic
- Global economics
- Moving Average
- Support/Resistance
- dollar
- algorithms
- Support lines
- value area
- Wilder' RSI
- Cannot rely on just one. I use MACD, RSI, Stochastics, EMAs and SMAs, patterns; occasionally even Bollinger Bands.
- Bollinger Bands
- Probable demand zones and supply zones and trend lines.
- Trendlines, Fibs, Ichimochu, RSI
- SPX, A/D line on NYSE
- rsi

## Question #5: Comments/Questions/Suggestions?

Thank you for all the feedback, feel free to [contact us](#) at any time with any other questions or comments.

- How will China's alternate reserve currency, which is pegged to the gold standard, affect the dollar in October?
- I think it was very interesting to speak out my ideas thanks
- We remain cautiously bullish but thinking more and more we will have at the very least a good correction soon.
- Nice to have this information
- I really think this survey is informative.
- Sell Hi yield bond holdings now.
- How rapid will be the decent which has already begun into an official bear market?