

# TimingResearch Crowd Forecast Newsletter (Beta)

## Weekly Report #156 – 09/18/16 Report

Open-ended responses for Questions #3, #4, and #5 start on page 3.

**Question #1. What direction do you think the S&P500 index will move from this coming Monday's open to Friday's close (September 19<sup>th</sup> to September 23<sup>rd</sup>)?**

Higher: 45.1%

Lower: 54.9%

**Question #2. Rate your confidence in your answer to Question #2 by estimating the probability you have correctly predicted next week's market move.**

Average of All Responses: 71.1%

Average For "Higher" Responses: 69.4%

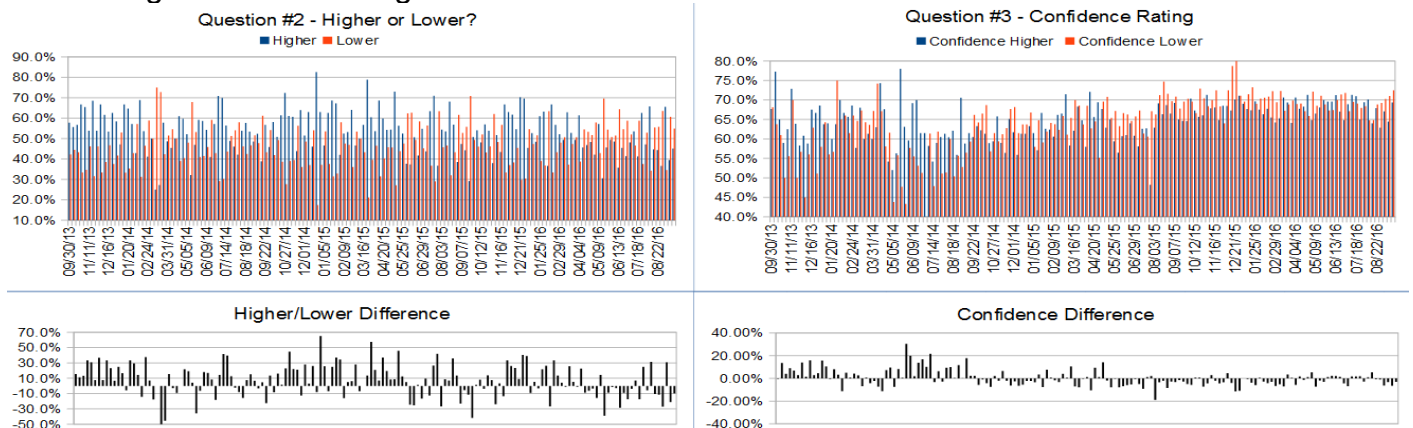
Average For "Lower" Responses: 72.5%

**Responses Submitted This Week: 51**

**TimingResearch Crowd Forecast Prediction: 69% Chance Higher**

*This prediction is an attempt by the editor of this newsletter to use the full 2+ year history of data collected from this project to forecast a probability estimate for whether this week's sentiment is going to be correct and ultimately what the markets will do this coming week.*

Details: Last week's majority sentiment was Lower, and the Crowd Forecast Indicator prediction was 63% Chance Lower; the S&P500 ended up 0.86% for the week. This week's majority sentiment is Lower (less than 10% difference) and higher average confidence on the bearish side. Similar conditions have been observed 13 times in the previous 155 weeks, with the majority sentiment being correct only 31% of the time with an average S&P500 move for the week of up 0.06% during those weeks, i.e. under similar conditions previously the majority sentiment has most often been wrong. Based on that history, the TimingResearch Crowd Forecast Indicator is forecasting 69% Chance Higher for the week.



Raw Data Page (raw data files include full history spreadsheet and the above charts): [TimingResearch.com/rawdata](http://TimingResearch.com/rawdata).

[Watch this week's TimingResearch web show here!](#) - Copyright TimingResearch.com 2016

Be sure you are registered at [TimingResearch.com](http://TimingResearch.com) to participate and receive the weekly updates. - page 1/7

# Full Weekly Results (full version of this chart available in the [raw data spreadsheet](#) for this week, "Date" field below lists the Monday of the week being predicted).

Overall Sentiment All-Time "Correct" Percentage: 49.0%

Overall Sentiment 52-Week "Correct" Percentage: 49.0%

Overall Sentiment 12-Week "Correct" Percentage: 36.4%

\*Data is the Monday of the week that was being predicted in the most recent survey.

Week	Higher	Lower	M/L Diff	Avg Confidence	Confidence Higher	Confidence Lower	Confidence Diff	Sentiment	Forecast	Actual	49.0% Correct?	SentCorrect	Actual	Sent	0.125w	12w	52w
1	08/30/13	57.6%	42.2%	15.6%	67.8%	67.7%	-0.40%	Higher	Lower	No	0	0	15,248.80	15,072.60	-177.20	-1.16%	11.8%
2	10/07/13	55.7%	44.4%	11.2%	77.3%	63.8%	13.50%	Higher	Higher	Yes	1	1	66.7%	15,231.30	15,389.70	168.40	1.11%
3	10/14/13	56.7%	43.3%	13.3%	63.0%	61.9%	1.00%	Higher	Higher	Yes	1	1	80.0%	15,569.20	15,815.55	246.35	1.56%
4	10/21/13	66.7%	33.3%	33.3%	58.0%	50.0%	8.00%	Higher	Higher	Yes	1	1	75.0%	15,401.30	15,570.30	169.00	1.10%
5	10/28/13	54.9%	34.8%	20.0%	62.5%	55.8%	6.60%	Higher	Higher	Yes	1	1	61.5%	1,841.47	1,831.37	-10.10	-0.55%
6	11/11/13	53.9%	46.2%	-2.2%	51.0%	72.9%	21.90%	Higher	Higher	Yes	1	1	83.3%	1,799.98	1,798.18	-1.80	-0.33%
7	11/18/13	64.4%	31.6%	32.8%	63.0%	50.0%	13.00%	Higher	Higher	Yes	1	1	85.7%	1,806.32	1,804.78	-1.54	-0.08%
8	11/25/13	57.9%	46.2%	11.7%	57.0%	56.7%	-0.30%	Higher	Lower	No	0	0	60.0%	1,808.33	1,805.81	-2.52	-0.34%
9	12/02/13	61.5%	36.5%	25.0%	67.0%	56.0%	11.00%	Higher	Lower	No	0	0	75.0%	1,806.21	1,775.32	-30.89	-1.71%
10	12/09/13	61.5%	36.5%	25.0%	67.0%	56.0%	11.00%	Higher	Lower	No	0	0	75.0%	1,806.21	1,775.32	-30.89	-1.71%
11	12/16/13	62.5%	37.5%	25.0%	60.0%	66.7%	6.70%	Higher	Higher	Yes	1	1	66.7%	1,822.92	1,841.40	18.48	1.01%
12	12/23/13	62.5%	37.5%	25.0%	60.0%	66.7%	6.70%	Higher	Higher	Yes	1	1	66.7%	1,822.92	1,841.40	18.48	1.01%
13	12/30/13	62.5%	37.5%	25.0%	60.0%	66.7%	6.70%	Higher	Higher	Yes	1	1	66.7%	1,822.92	1,841.40	18.48	1.01%
14	01/06/14	47.1%	52.9%	-5.8%	64.0%	64.3%	-0.30%	Lower	Lower	No	0	0	57.1%	1,832.31	1,842.37	10.06	0.55%
15	01/13/14	46.1%	53.9%	-7.8%	64.0%	64.3%	-0.30%	Lower	Lower	No	0	0	57.1%	1,832.31	1,842.37	10.06	0.55%
16	01/20/14	64.7%	35.3%	29.4%	58.0%	56.7%	1.30%	Higher	Higher	Yes	1	1	50.0%	1,841.05	1,790.22	-50.83	-2.76%
17	01/27/14	64.7%	35.3%	29.4%	58.0%	56.7%	1.30%	Higher	Higher	Yes	1	1	50.0%	1,841.05	1,790.22	-50.83	-2.76%
18	02/03/14	42.9%	57.1%	-14.2%	67.0%	70.0%	3.00%	Lower	Lower	No	0	0	44.4%	1,798.20	1,787.02	-11.18	-0.62%
19	02/10/14	42.9%	57.1%	-14.2%	67.0%	70.0%	3.00%	Lower	Lower	No	0	0	44.4%	1,798.20	1,787.02	-11.18	-0.62%
20	02/17/14	53.6%	46.4%	7.1%	63.7%	65.7%	-2.00%	Higher	Lower	No	0	0	45.0%	1,839.03	1,836.25	-2.78	-0.15%
21	02/24/14	50.0%	50.0%	0.0%	61.2%	66.0%	4.80%	Higher	Lower	No	0	0	42.9%	1,807.68	1,878.04	70.36	3.91%
22	03/03/14	25.0%	75.0%	-50.0%	67.0%	65.0%	2.00%	Higher	Lower	No	0	0	45.0%	1,877.68	1,841.13	-36.55	-1.95%
23	03/10/14	27.3%	72.7%	-45.5%	63.0%	64.3%	-1.30%	Lower	Lower	No	0	0	43.5%	1,842.81	1,866.52	23.71	1.29%
24	03/17/14	46.5%	53.5%	-7.0%	60.0%	61.3%	-1.30%	Lower	Higher	No	0	0	41.7%	1,859.48	1,851.62	-7.86	-0.42%
25	03/24/14	46.5%	53.5%	-7.0%	60.0%	61.3%	-1.30%	Lower	Higher	No	0	0	41.7%	1,859.48	1,851.62	-7.86	-0.42%
26	03/31/14	50.0%	50.0%	0.0%	70.7%	74.3%	3.60%	Higher	Higher	N/A	N/A	N/A	42.3%	1,816.18	1,884.85	68.67	3.79%
27	04/07/14	48.5%	51.5%	-3.0%	63.0%	67.4%	4.40%	Higher	Higher	Yes	1	1	40.7%	1,865.79	1,863.40	-2.39	-0.13%
28	04/14/14	50.0%	50.0%	0.0%	70.7%	67.1%	3.60%	Higher	Higher	N/A	N/A	N/A	42.3%	1,816.18	1,884.85	68.67	3.79%
29	04/21/14	48.5%	51.5%	-3.0%	63.0%	67.4%	4.40%	Higher	Higher	Yes	1	1	40.7%	1,865.79	1,863.40	-2.39	-0.13%
30	04/28/14	59.6%	40.4%	19.2%	57.0%	61.6%	4.60%	Higher	Higher	Yes	1	1	42.3%	1,865.00	1,884.14	16.14	0.87%
31	05/05/14	59.6%	40.4%	19.2%	57.0%	61.6%	4.60%	Higher	Higher	Yes	1	1	42.3%	1,865.00	1,884.14	16.14	0.87%
32	05/12/14	52.1%	47.9%	4.2%	48.0%	52.0%	-4.00%	Lower	Higher	Yes	1	1	41.4%	1,878.45	1,878.45	0.00	0.00%
33	05/19/14	52.1%	47.9%	4.2%	48.0%	52.0%	-4.00%	Lower	Higher	Yes	1	1	41.4%	1,878.45	1,878.45	0.00	0.00%
34	05/26/14	59.1%	40.9%	18.2%	55.0%	53.3%	1.70%	Higher	Higher	Yes	1	1	43.6%	1,880.03	1,877.80	-2.23	-0.12%
35	06/02/14	59.1%	40.9%	18.2%	55.0%	53.3%	1.70%	Higher	Higher	Yes	1	1	43.6%	1,880.03	1,877.80	-2.23	-0.12%
36	06/09/14	54.2%	45.8%	8.3%	62.0%	55.9%	6.10%	Higher	Lower	No	0	0	44.1%	1,948.97	1,936.10	-12.87	-0.66%
37	06/16/14	54.2%	45.8%	8.3%	62.0%	55.9%	6.10%	Higher	Lower	No	0	0	44.1%	1,948.97	1,936.10	-12.87	-0.66%
38	06/23/14	54.2%	45.8%	8.3%	62.0%	55.9%	6.10%	Higher	Lower	No	0	0	44.1%	1,948.97	1,936.10	-12.87	-0.66%
39	06/30/14	70.8%	29.2%	41.7%	61.5%	40.0%	21.50%	Higher	Lower	No	0	0	43.2%	2,060.79	2,085.44	24.65	1.20%
40	07/07/14	70.8%	29.2%	41.7%	61.5%	40.0%	21.50%	Higher	Lower	No	0	0	43.2%	2,060.79	2,085.44	24.65	1.20%
41	07/14/14	58.4%	41.6%	16.8%	54.2%	47.9%	6.30%	Higher	Higher	Yes	1	1	43.0%	1,988.88	1,975.22	-13.66	-0.69%
42	07/21/14	58.4%	41.6%	16.8%	54.2%	47.9%	6.30%	Higher	Higher	Yes	1	1	43.0%	1,988.88	1,975.22	-13.66	-0.69%
43	07/28/14	43.0%	57.0%	-14.0%	51.1%	51.1%	0.00%	Lower	Lower	Yes	1	1	43.9%	1,978.25	1,925.55	-52.70	-2.68%
44	08/04/14	43.0%	57.0%	-14.0%	51.1%	51.1%	0.00%	Lower	Lower	Yes	1	1	43.9%	1,978.25	1,925.55	-52.70	-2.68%
45	08/11/14	53.8%	46.2%	7.7%	60.0%	60.0%	0.00%	Higher	Higher	Yes	1	1	44.2%	1,933.43	1,955.06	21.63	1.12%
46	08/18/14	53.8%	46.2%	7.7%	60.0%	60.0%	0.00%	Higher	Higher	Yes	1	1	44.2%	1,933.43	1,955.06	21.63	1.12%
47	08/25/14	53.8%	46.2%	7.7%	60.0%	60.0%	0.00%	Higher	Higher	Yes	1	1	44.2%	1,933.43	1,955.06	21.63	1.12%
48	09/01/14	52.3%	47.7%	4.6%	57.7%	56.5%	1.20%	Higher	Lower	No	0	0	44.7%	2,007.17	1,985.54	-21.63	-1.08%
49	09/08/14	52.3%	47.7%	4.6%	57.7%	56.5%	1.20%	Higher	Lower	No	0	0	44.7%	2,007.17	1,985.54	-21.63	-1.08%
50	09/15/14	56.7%	43.3%	13.4%	63.0%	66.2%	3.20%	Higher	Lower	No	0	0	42.9%	2,009.08	1,982.85	-26.23	-1.31%
51	09/22/14	56.7%	43.3%	13.4%	63.0%	66.2%	3.20%	Higher	Lower	No	0	0	42.9%	2,009.08	1,982.85	-26.23	-1.31%
52	09/29/14	56.7%	43.3%	13.4%	63.0%	66.2%	3.20%	Higher	Lower	No	0	0	42.9%	2,009.08	1,982.85	-26.23	-1.31%
53	10/06/14	58.1%	41.9%	16.1%	64.0%	66.2%	2.20%	Higher	Lower	No	0	0	43.1%	1,970.01	1,946.13	-23.88	-1.21%
54	10/13/14	58.1%	41.9%	16.1%	64.0%	66.2%	2.20%	Higher	Lower	No	0	0	43.1%	1,970.01	1,946.13	-23.88	-1.21%
55	10/20/14	61.4%	38.6%	22.8%	58.1%	58.8%	0.70%	Higher	Higher	Yes	1	1	43.4%	1,885.82	1,984.58	98.76	5.24%
56	10/27/14	61.4%	38.6%	22.8%	58.1%	58.8%	0.70%	Higher	Higher	Yes	1	1	43.4%	1,885.82	1,984.58	98.76	5.24%
57	11/03/14	61.0%	39.0%	22.0%	63.0%	59.4%	3.60%	Higher	Higher	Yes	1	1	45.5%	2,018.21	2,033.92	15.71	0.78%
58	11/10/14	61.0%	39.0%	22.0%	63.0%	59.4%	3.60%	Higher	Higher	Yes	1	1	45.5%	2,018.21	2,033.92	15.71	0.78%
59	11/17/14	43.8%	56.2%	-12.5%	60.0%	62.8%	2.80%	Higher	Lower	No	0	0	45.6%	2,038.29	2,063.50	25.21	1.24%
60	11/24/14	43.8%	56.2%	-12.5%	60.0%	62.8%	2.80%	Higher	Lower	No	0	0	45.6%	2,038.29	2,063.50	25.21	1.24%
61	12/01/14	51.5%	48.5%	2.9%	64.0%	61.7%	2.30%	Higher	Higher	Yes	1	1	47.5%	2,085.78	2,075.37	-10.41	-0.50%
62	12/08/14	51.5%	48.5%	2.9%	64.0%	61.7%	2.30%	Higher	Higher	Yes	1	1	47.5%	2,085.78	2,075.37	-10.41	-0.50%
63	12/15/14	46.0%	54.0%	-8.0%	61.3%	68.2%	7.00%	Higher	Higher	Yes	1	1	45.9%	2,005.03	2,070.65	65.62	3.27%
64	12/22/14	46.0%	54.0%	-8.0%	61.3%	68.2%	7.00%	Higher	Higher	Yes	1	1	45.9%	2,005.03	2,070.65	65.62	3.27%
65	12/29/14	62.9%	37.1%	25.8%	64.0%	66.6%	2.60%	Higher	Lower	No	0	0	46.0%	2,087.63	2,058.20	-29.43	-1.41%
66	01/05/15	62.9%	37.1%	25.8%	64.0%	66.6%	2.60%	Higher	Lower	No	0	0	46.0%	2,087.63	2,058.20	-29.43	-1.41%
67	01/12/15	62.9%	37.1%	25.8%	64.0%	66.6%	2.60%	Higher	Lower	No	0	0	46.0%	2,087.63	2,058.20	-29.43	-1.41%
68	01/19/15	62.9%	37.1%	25.8%	64.0%	66.6%	2.60%	Higher	Lower	No	0	0	46.0%	2,087.63	2,058.20	-29.43	-1.41%
69	01/26/15	62.9%	37.1%	25.8%	64.0%	66.6%	2.60%	Higher	Lower	No	0	0	46.0%	2,087.63	2,058.20	-29.43	-1.41%
70	02/02/15	62.9%	37.1%	25.8%	64.0%	66.6%	2.60%	Higher	Lower	No	0	0	46.0%	2,087.63	2,058.20	-29.43	-1.41%
71	02/09/15	62.9%	37.1%	25.8%	64.0%	66.6%	2.60%	Higher	Lower	No	0	0	46.0%	2,087.63	2,058.20	-29.43	-1.41%
72	02/16/15	62.9%	37.1%	25.8%	64.0%	66.6%	2.60%	Higher	Lower	No	0	0	46.0%	2,087.63	2,058.20	-29.43	-1.41%
73	02/23/15	60.0%	40.0%	20.0%	61.3%	66.5%	5.20%	Higher	Lower	No	0	0	46.5%	2,108.83	2,104.50	-4.33	-0.20%
74	03/02/15	60.0%	40.0%	20.0%	61.3%	66.5%	5.20%	Higher	Lower								

*NOTE: The following open-ended answers are solely the opinions of the anonymous responders to this survey. Responses are mostly unedited, but some have been reformatted slightly for to make them easier to read and are listed in order of submission. Some useless/irrelevant responses (e.g. "none") have been omitted. All responses for each week, unedited, are available in the raw data spreadsheets at [TimingResearch.com/rawdata](http://TimingResearch.com/rawdata).*

**Question #3. For your answer to Question #1, please share what specific reason(s) you think the S&P500 will be heading the direction you chose.**

**“Higher” Respondent Answers:**

- actually I think the mkt will be flat!
- Market spent 5 days consolidating, and could not go lower! Indicates a rally, and expect an important high (or low) about Oct 14- or a week later. S&P 500 target 2220 to 2232.
- Fed leans left so no increase.
- Daily true strength cycle is just past a low.
- Fed meeting. Best guess, no rate hike now.
- fed next weak
- Distribution.
- Market will rally on Fed decision to not raise interest rates in Sept. Any remarks for possible Dec. rate increase will be dismissed, for now.
- Price action had a normal dip near a high next week will more up days
- technicals
- weekly still looks good
- election cycle will keep the fed dovish
- Bull market
- Fed action.
- a feeling
- Fed does nothing
- Fed won't raise so good news is good?
- Seasonality typically up before Fed meeting

**“Lower” Respondent Answers:**

- Stale market due to indecisive Fed actions market already priced in rate hike
- the feds will not increase interest in September
- fomc next week
- Time for a pull back
- I don't know!!
- FINANCIAL NEWS
- Higher VIX.
- market fundamentals
- Needs to take out support at Dow 18,000 before going bak up.
- We completed 5 waves from DOW 15503 and 5 waves 17063
- its over period the fed won't raise rates but it won't matter to much money has left the market
- bear market approaching
- News from the FOMC meeting pointing to an interest rate increase by the end of the year

- demographics
- BOJ and Janet will fail to stimulate market
- Futures on the S&P 500 Index were trading lower
- none
- down is the short term trend

**Question #4. What do you think are the main reasons why most traders are not successful and consistent? What could the average trader do to improve consistency?**

- know trend
- Try to stay objective about the trade.
- the media influence the general public and institutions/banks gives information to the media
- Emotions, including greed, impatience and all denials, then simple recognising skills, timing and self confidence are affected by the former. Manage emotions, later anything needed arises by itself.
- Discipline to follow rules
- Fear and greed. Training
- Have rules and follow them with occasional fine-tuning.
- Treat it like gambling. Put all eggs in one basket.
- If u can't beat em cheat em
- relying on opinion of commentators and over reacting to news stories; too much dependency on technical indicators that are not consistent; taking large positions that blow out accounts
- sell losses shortly after they appear
- I have no idea!
- Losers let emotions interfere with their thinking and behavior. And lack of confidence, failure to make a trading plan for each trade. and failure to follow through on his or her plan.
- fear and greed
- Traders are not consistent because they get discouraged when market does not react to fundamental measures because of Central Banks intervention and computer driven markets. They need to learn to trade using multiple technical indicators.
- noise
- seek longer time frame trades
- LISTENING TO BLOVIATORS
- Patience
- Not placing stop loss orders before making the trade
- No,profitable plan choose a time frame a consistent price action trader
- Holding on to degrading stocks to long.
- Not knowing their risk. Get a mentor.
- follow too many systems
- quantitative disciplines utilized extensively
- follow the market all day and the overseas markets all night i am not kidding
- look for stocks that are profitable and buy near lows and not highs.
- stick to a proven plan
- develop a mental edge
- they are human beings stop trading
- Plan, apply plan consistently with patience.

## Question #5. Additional Comments/Questions/Suggestions?

Thank you for all the feedback, feel free to [contact us](#) at any time with any other questions or comments.

- Politicians need to be limited to same amount of money for each candidate without any other money like super packs.
- does not believe media or institutions and banks
- Still confined to recent market ranges bar an unexpected event
- Thank you!
- GB the trader king
- Thank you.
- How do I find and determine if a stock is under accumulation or distribution? How to really follow the money!
- not well prepared
- Barring an unexpected event, volatility will likely diminish now until the middle of Oct. Fed will use all weapons to keep the market up and stable until the election.
- none
- n/a
- I've always felt traders should work in pairs - one offense and two defense.
- None
- none
- Follow the trend of a stock with volume breakout that is trending strongly changing up.
- Precisely when to get out of a winning trade?

## Standing Predictions

Below are some of the one-time prediction-type questions asked in previous weeks that have not been finalized yet or have been finalized recently. Suggest a future question [here](#).

**Week 150, 08/07/16 Report** - Who do you personally think most likely will win the 2016 US Presidential Election?

Hillary Clinton (Democratic) – 61%

Donald Trump (Republican) – 39%

Gary Johnson (Libertarian) – 0%

Jill Stein (Green) – 0%

**Week 132, 04/03/16 Report** - When will the Fed next raise interest rates?

Not during 2016 - 36%

June 2016 - 26%

December 2016 - 10%

November 2016 - 9%

April 2016 - 6%

July 2016 - 6%

September 2016 - 4%

August 2016 - 3%

May 2016 (no meeting currently scheduled) - 1%

October 2016 (no meeting currently scheduled) – 0%

**Week 128, 03/06/16 Report** - The S&P500 and other major indexes moved into correction territory earlier this year before rallying over the last few weeks. Do you think we are safely beyond the correction?

Yes: 20.0%

No: 80.0%

**Week 127, 02/28/16 Report** - Do you think the United States economy will be in a recession before the end of 2016?

Yes: 49.3%

No: 50.7%

**Week 121, 01/17/16 Report** - What do you think is the lowest price that Crude Oil will trade at during 2016? (it is currently around \$30)

Average Of All Numerical Answers: \$22.22

**Week 52, 09/21/14 Report** - If Hilary Clinton runs for president in 2016, do you think she will win?

Yes - 41.5%

No - 58.5%