

[Monday, 1PM ET: Top Trading Experts Discuss This Report! Click Here To Learn More.](#)

Question #1. Which direction do you think the S&P500 index will move from this coming Monday's open to Friday's close (March 12th to March 16th)?

(The order of possible responses to this question on the survey were randomized for each viewer.)

Higher: 72.0%

Lower: 28.0%

Higher/Lower Difference: 44.0%

Question #2. Rate your confidence in your answer to Question #2 by estimating the probability you have correctly predicted next week's market move.

Average of All Responses: 69.7%

Average For "Higher" Responses: 69.7%

Average For "Lower" Responses: 69.6%

Higher/Lower Difference: 0.1%

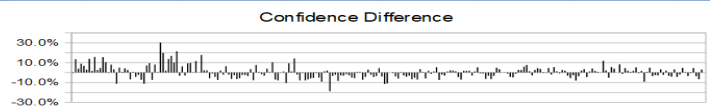
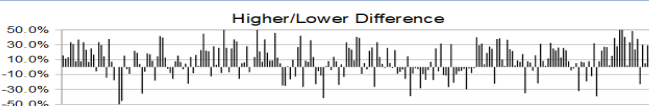
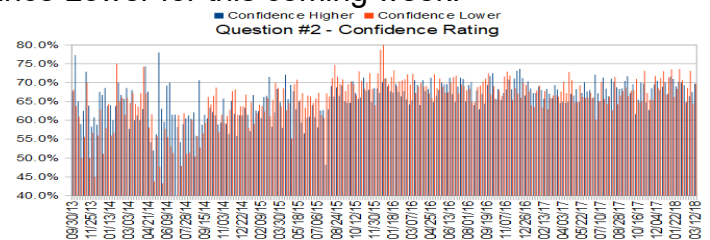
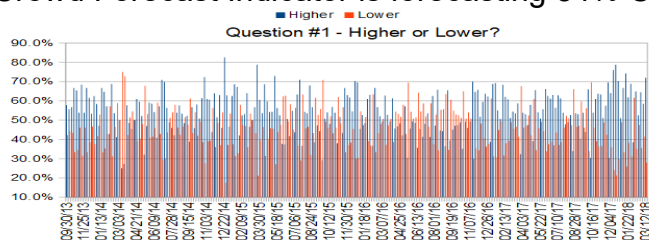
Responses Submitted This Week: 50

26-Week Average Number of Responses: 50.4

TimingResearch Crowd Forecast Prediction: 54% Chance Lower

This prediction is an attempt by the editor of this newsletter to use the full 4+ year history of data collected from this project to forecast a probability estimate for whether this week's sentiment is going to be correct and ultimately what the markets will do this coming week.

Details: Last week's majority sentiment was 58.5% Higher, and the Crowd Forecast Indicator prediction was 64% Chance Higher; the S&P500 closed 3.94% Higher for the week. This week's majority sentiment from the survey is 72.0% Higher with a greater average confidence from those who responded Higher. Similar conditions have been observed 13 times in the previous 232 weeks, with the majority sentiment being correct 46% of the time, with an average S&P500 move for the week of 0.17% Lower during those weeks. Based on that history, the TimingResearch Crowd Forecast Indicator is forecasting 54% Chance Lower for this coming week.



Raw Data Page (raw data files include full history spreadsheet and the above charts): TimingResearch.com/data.

TimingResearch Crowd Forecast News Report #233 (03/11/2018) - Page 2/7

[Monday, 1PM ET: Top Trading Exports Discuss This Report! Click Here To Learn More.](#)

Full Weekly Results (full version of this chart available in the [raw data](#) spreadsheet for this week, "Date" field below lists the Monday of the week being predicted).

Overall Sentiment All-Time "Correct" Percentage: 50.9%
 Overall Sentiment 52-Week "Correct" Percentage: 49.0%
 Overall Sentiment 12-Week "Correct" Percentage: 72.7%

Only the previous 52 weeks of data are shown below, please [download the raw data](#) to see the full range of past data.

182	03/20/17	58.7%	41.3%	17.3%	67.4%	68.2%	66.3%	1.9%	Higher	64%	Higher	Lower	No	0	0	51.1%	2,378.24	2,343.98	-34.26	-1.44%
183	03/27/17	32.4%	67.6%	-35.3%	66.6%	64.6%	67.6%	-3.1%	Lower	57%	Higher	Higher	No	0	1	50.8%	2,329.11	2,362.72	33.61	1.44%
184	04/03/17	53.8%	46.2%	7.7%	67.3%	64.8%	70.2%	-5.4%	Higher	56%	Higher	Lower	No	0	0	50.6%	2,362.34	2,355.54	-6.80	-0.29%
185	04/10/17	53.0%	47.0%	6.1%	65.8%	64.6%	67.3%	-2.7%	Higher	53%	Higher	Lower	No	0	0	50.3%	2,357.16	2,328.95	-28.21	-1.20%
186	04/17/17	47.5%	52.5%	-4.9%	69.0%	64.8%	72.8%	-8.0%	Lower	56%	Higher	Higher	No	0	1	50.0%	2,332.62	2,348.69	16.07	0.69%
187	04/24/17	57.9%	42.1%	15.8%	68.5%	67.0%	70.6%	-3.7%	Higher	58%	Lower	Higher	Yes	1	1	50.3%	2,370.33	2,384.20	13.87	0.59%
188	05/01/17	39.1%	60.9%	-21.9%	65.5%	66.6%	64.7%	1.9%	Lower	57%	Higher	Higher	No	0	1	50.0%	2,388.50	2,399.29	10.79	0.45%
189	05/08/17	65.6%	34.4%	31.1%	67.1%	68.3%	64.8%	3.5%	Higher	64%	Higher	Lower	No	0	0	49.7%	2,399.94	2,390.90	-9.04	-0.38%
190	05/15/17	54.1%	45.9%	8.2%	66.9%	64.9%	69.3%	-4.4%	Higher	55%	Higher	Lower	No	0	0	49.5%	2,393.98	2,381.73	-12.25	-0.51%
191	05/22/17	50.8%	49.2%	1.6%	66.7%	67.3%	66.2%	1.1%	Higher	59%	Higher	Higher	Yes	1	1	49.7%	2,387.21	2,415.82	28.61	1.20%
192	05/29/17	55.7%	44.3%	11.4%	68.3%	70.1%	66.0%	4.2%	Higher	62%	Higher	Higher	Yes	1	1	50.0%	2,411.67	2,439.07	27.40	1.14%
193	06/05/17	66.2%	33.8%	32.4%	67.1%	67.7%	66.0%	1.6%	Higher	62%	Higher	Lower	No	0	0	49.7%	2,437.83	2,431.77	-6.06	-0.25%
194	06/12/17	62.5%	37.5%	25.0%	67.7%	68.0%	67.3%	0.7%	Higher	60%	Higher	Higher	Yes	1	1	50.0%	2,425.88	2,433.15	7.27	0.30%
195	06/19/17	61.1%	38.9%	22.2%	66.0%	65.9%	68.1%	-0.2%	Higher	52%	Lower	Lower	No	0	0	49.7%	2,442.55	2,438.30	-4.25	-0.17%
196	06/26/17	63.1%	36.9%	26.2%	67.7%	72.1%	60.2%	11.9%	Higher	69%	Higher	Lower	No	0	0	49.5%	2,443.32	2,423.41	-19.91	-0.81%
197	07/03/17	56.5%	43.5%	12.9%	66.2%	67.1%	65.0%	2.1%	Higher	61%	Higher	Lower	No	0	0	49.2%	2,431.39	2,425.18	-6.21	-0.26%
198	07/10/17	62.9%	37.1%	25.7%	67.0%	65.1%	70.2%	-5.1%	Higher	55%	Lower	Higher	Yes	1	1	49.5%	2,424.51	2,459.27	34.76	1.43%
199	07/17/17	61.3%	38.7%	22.6%	69.1%	71.3%	65.6%	5.7%	Higher	64%	Higher	Higher	Yes	1	1	49.7%	2,459.50	2,472.54	13.04	0.53%
200	07/24/17	53.8%	46.2%	7.7%	66.5%	68.4%	64.4%	4.0%	Higher	61%	Higher	Higher	Yes	1	1	50.0%	2,472.04	2,472.10	0.06	0.00%
201	07/31/17	47.8%	52.2%	-4.5%	66.3%	66.4%	66.3%	0.1%	Lower	57%	Lower	Higher	No	0	1	49.7%	2,475.94	2,476.83	0.89	0.04%
202	08/07/17	49.0%	51.0%	-2.0%	66.8%	71.0%	62.7%	8.3%	Lower	53%	Higher	Lower	Yes	1	0	50.0%	2,477.14	2,441.32	-35.82	-1.45%
203	08/14/17	52.6%	47.4%	5.3%	70.8%	70.2%	71.5%	-1.3%	Higher	52%	Lower	Lower	No	0	0	49.7%	2,454.96	2,425.55	-29.41	-1.20%
204	08/21/17	33.9%	66.1%	-32.2%	65.8%	68.8%	64.2%	4.5%	Lower	70%	Higher	Higher	No	0	1	49.5%	2,425.50	2,443.05	17.55	0.72%
205	08/28/17	53.6%	46.4%	7.1%	67.5%	68.3%	66.5%	1.8%	Higher	73%	Higher	Higher	Yes	1	1	49.8%	2,447.35	2,476.55	29.20	1.19%
206	09/04/17	53.0%	47.0%	6.1%	68.1%	68.4%	67.7%	0.7%	Higher	75%	Higher	Lower	No	0	0	49.5%	2,470.35	2,461.43	-8.92	-0.36%
207	09/11/17	40.4%	59.6%	-19.3%	69.4%	70.4%	68.7%	1.8%	Lower	73%	Higher	Higher	No	0	1	49.3%	2,474.52	2,500.23	25.71	1.04%
208	09/18/17	53.8%	46.2%	7.7%	69.2%	71.7%	66.4%	5.3%	Higher	68%	Higher	Lower	No	0	0	49.0%	2,502.51	2,502.22	-0.29	-0.01%
209	09/25/17	43.9%	56.1%	-12.3%	67.5%	67.2%	67.8%	-0.6%	Lower	63%	Higher	Higher	No	0	1	48.8%	2,499.39	2,519.36	19.97	0.80%
210	10/02/17	66.0%	34.0%	32.0%	69.0%	69.6%	67.9%	1.6%	Higher	61%	Higher	Higher	Yes	1	1	49.0%	2,521.20	2,549.33	28.13	1.12%
211	10/09/17	30.4%	69.6%	-39.1%	68.4%	61.7%	70.9%	-9.3%	Lower	55%	Higher	Higher	No	0	1	48.8%	2,551.39	2,553.17	1.78	0.07%
212	10/16/17	53.8%	46.2%	7.7%	65.1%	65.5%	64.7%	0.8%	Higher	59%	Higher	Higher	Yes	1	1	49.0%	2,555.57	2,575.21	19.64	0.77%
213	10/23/17	61.0%	39.0%	22.0%	68.1%	70.0%	65.0%	5.0%	Higher	62%	Higher	Higher	Yes	1	1	49.3%	2,578.08	2,581.07	2.99	0.12%
214	10/30/17	63.6%	36.4%	27.3%	70.9%	69.7%	73.2%	-3.4%	Higher	52%	Lower	Higher	Yes	1	1	49.5%	2,577.75	2,587.84	10.09	0.39%
215	11/06/17	63.3%	36.7%	26.7%	65.7%	64.7%	67.3%	-2.5%	Higher	52%	Lower	Lower	No	0	0	49.3%	2,587.47	2,582.30	-5.17	-0.20%
216	11/13/17	51.2%	48.8%	2.3%	64.1%	62.7%	65.5%	-2.8%	Higher	55%	Lower	Higher	Yes	1	1	49.5%	2,576.53	2,578.85	2.32	0.09%
217	11/20/17	57.5%	42.5%	15.0%	67.1%	68.5%	65.3%	3.2%	Higher	60%	Higher	Higher	Yes	1	1	49.8%	2,579.49	2,602.42	22.93	0.89%
218	11/27/17	69.6%	30.4%	39.1%	70.2%	69.5%	71.8%	-2.3%	Higher	63%	Higher	Higher	Yes	1	1	50.0%	2,602.66	2,642.22	39.56	1.52%
219	12/04/17	64.0%	36.0%	28.0%	69.8%	70.5%	68.6%	1.9%	Higher	58%	Higher	Lower	No	0	0	49.8%	2,657.19	2,651.50	-5.69	-0.21%
220	12/11/17	76.0%	24.0%	52.0%	68.8%	68.0%	71.3%	-3.2%	Higher	67%	Higher	Higher	Yes	1	1	50.0%	2,652.19	2,675.81	23.62	0.89%
221	12/18/17	78.7%	21.3%	57.4%	69.8%	68.9%	73.0%	-4.1%	Higher	70%	Higher	Lower	No	0	0	49.8%	2,685.92	2,683.34	-2.58	-0.10%
222	12/25/17	70.2%	29.8%	40.4%	69.2%	70.2%	66.8%	3.4%	Higher	55%	Lower	Lower	No	0	0	49.5%	2,679.09	2,673.61	-5.48	-0.20%
223	01/01/18	51.1%	48.9%	2.2%	69.1%	67.0%	71.4%	-4.4%	Higher	52%	Lower	Higher	Yes	1	1	49.8%	2,683.73	2,743.15	59.42	2.21%
224	01/08/18	66.7%	33.3%	33.3%	72.3%	71.6%	73.5%	-1.9%	Higher	64%	Higher	Higher	Yes	1	1	50.0%	2,742.67	2,786.24	43.57	1.59%
225	01/15/18	74.2%	25.8%	48.4%	69.8%	71.0%	66.3%	4.7%	Higher	73%	Higher	Higher	Yes	1	1	50.2%	2,798.96	2,810.30	11.34	0.41%
226	01/22/18	61.8%	38.2%	23.6%	68.7%	69.0%	68.3%	0.6%	Higher	56%	Higher	Higher	Yes	1	1	50.5%	2,809.16	2,872.87	63.71	2.27%
227	01/29/18	68.9%	31.1%	37.8%	71.2%	70.2%	73.6%	-3.4%	Higher	53%	Lower	Lower	No	0	0	50.2%	2,867.23	2,762.13	-105.10	-3.67%
228	02/05/18	38.5%	61.5%	-23.1%	70.4%	70.0%	70.6%	-0.6%	Lower	58%	Higher	Lower	Yes	1	0	50.4%	2,741.06	2,619.55	-121.51	-4.43%
229	02/12/18	64.9%	35.1%	29.8%	67.7%	69.3%	64.8%	4.6%	Higher	63%	Higher	Higher	Yes	1	1	50.7%	2,636.75	2,732.22	95.47	3.62%
230	02/19/18	52.5%	47.5%	5.1%	66.6%	64.8%	68.6%	-3.7%	Higher	56%	Lower	Higher	Yes	1	1	50.9%	2,722.99	2,747.30	24.31	0.89%
231	02/26/18	64.4%	35.6%	28.9%	68.8%	66.4%	73.1%	-6.8%	Higher	59%	Lower	Lower	No	0	0	50.7%	2,757.37	2,691.25	-66.12	-2.40%
232	03/05/18	58.5%	41.5%	17.1%	66.2%	67.5%	64.4%	3.1%	Higher	64%	Higher	Higher	Yes	1	1	50.9%	2,681.06	2,786.57	105.51	3.94%
233	03/12/18	72.0%	28.0%	44.0%	69.7%	69.7%	69.6%	0.1%	Higher	54%	Lower	???	???	???	???	???	???	???	???	???

Weekly Reports Page: TimingResearch.com/reports

Raw Data Page: TimingResearch.com/rawdata

Current Survey Page: TimingResearch.com/currentsurvey

Any feedback email: news@timingresearch.com

NOTE: The following open-ended answers are solely the opinions of the anonymous respondents to this survey. Responses are mostly unedited, but some have been reformatted slightly for to make them easier to read. Some irrelevant responses (e.g. "none"), or anything obviously fake, or copy and pasted responses have been omitted. All-caps responses have been changed to all lowercase. All responses for each week, unedited, are available in the raw data spreadsheets at TimingResearch.com/data.

Question #3. For your answer to Question #1, please share what specific reason(s) you think the S&P500 will be heading the direction you chose.

“Higher” Respondent Answers:

- Donald Trump adjendas maybe
- Historically best six months of the year
- Consumer confidence
- The heavy Selling is over
- Heavy Selling over it appears
- The market will crash when they decide it will
- jobs report etc.
- UP trend is strong enough. Index SP will reach the TOP price from january 2018
- recent trend
- no change on prior comment.
- Price already broke above 161.8% Fibonacci Extension
- Friday broke through a resistance area I was watching with news catalyst and overall sentiment of investors are hoping for the 2017 bullishness to continue.
- Monthly options expiration is usually bullish
- Expecting continuing momentum from last Friday's strong across-the-board gains, with this leg carrying to all-time-high for S&P.
- Market is recovering, above all daily MAs
- Renew upward trend
- After boucing back to post-correction high, (a 78.2 retracement of correction low), next stop is 2800. Perhaps there will be a pause there before going to take out the old high.
- Trader confidence and the Dr. Barry Burns stochastics indicator (daily and weekly together).

“Lower” Respondent Answers:

- Bond yields
- Short term overbought & market internals don't seem to support the strong move last week (especially Friday's move). For example, the % stocks > 50d sma is still < 60% and new highs vs new low % is less than 15%.
- its time
- Anticipating fed decision to raise interest rate this months meeting.
- cause it didn't break the previous high

[Monday, 1PM ET: Top Trading Exports Discuss This Report! Click Here To Learn More.](#)

- The downside correction will continue until a selling climax occurs.
- Even though all my "reliable" indicators are bullish as am I and monthly option expirations are usually bullish, I think that since we have a double top measured from 2/27/18 and since SPX was up about 100 points last week, the market is ready for a pause to consolidate especially because of the overhead supply. Friday saw a lot of short covering on very good news and I'd love to see some follow-through but the market will start thinking about the March Fed meeting and will be taking some profits.
- profit taking
- overdue for a deep correction.

Question #4. What indicator influences your trading the most?

- White candlesticks in US sp 500 last week one
- Stochastics
- rsi and tick
- Macd
- Dow S&P price moves
- no indicator, only news
- Elliott Wave
- recent history
- Jake Bernstein's small-traders sentiment
- MA= 50+20 SMA
- CCI
- trendlines
- macd , full stochastics and adx, but w/ special numbers, not the normal ones
- 50 sma & 8 ema
- price movement
- Price action, with momentum and Bollinger bands helpful.
- no indicators just price action
- Graphs
- Volume.
- Price, volume, the expected move and the premium or discount between the futures and the cash.
- Fibonacci and CCI
- volume
- candlestick patterns
- Fib levels RSI 2
- Moving averages.

Question #5. Additional Comments/Questions/Suggestions?

Thank you for all the feedback, feel free to [contact us](#) at any time with any other questions or comments.

- If fed don't raise rate this meeting market will shoot up
- short-term bullish first few days of week then somewhat indecisive. Expect this is only beginning of volatility and bearishness will come back related to interest rates, debt and other factors. Long-term, noticeable great challenges ahead with debt, energy, infrastructure issues, environmental issues and so on..
- but if i did use any indicator the rsi would influence my trading
- Tariffs are a bad thing. Penalties for dumping is a good thing. Free trade is best for all. If NK de-nukes, the left will say it's because of Obama and if NK de-nukes, Kim will probably get the Nobel Peace Prize instead of Trump.

Recently Closed Predictions

Week 171, 01/02/17 Report - In 2016 the S&P500 opened at 2,038.20 and closed at 2,238.83. Where do you think the S&P500 will close in 2017?

Average: 2,318.53

Actual Close: 2,673.61 (15% higher than the average of all predictions)

Standing Predictions

Below are some of the one-time prediction-type questions asked in previous weeks that have not been finalized yet or have been finalized recently. Suggest a future question [here](#).

Week 171, 01/21/18 Report - The S&P500 closed for 2017 at 2,673.61. Where do you think it will close for 2018?

- 57.8%: Higher 2-20%.
- 15.6%: Lower 2-20%.
- 13.3%: Higher 21% or more.
- 6.7%: Unchanged. Less than 2% change Higher or Lower.
- 6.7%: Lower 21% or more.