

[Monday, 1PM ET: Top Trading Exports Discuss This Report! Click Here To Learn More.](#)

**Question #1. Which direction do you think the S&P500 index will move from this coming Monday's open to Friday's close (April 30th to May 4th)?**

*(The order of possible responses to this question on the survey were randomized for each viewer.)*

Higher: 58.1%

Lower: 41.9%

Higher/Lower Difference: 16.1%

**Question #2. Rate your confidence in your answer to Question #2 by estimating the probability you have correctly predicted next week's market move.**

Average of All Responses: 66.9%

Average For "Higher" Responses: 64.3%

Average For "Lower" Responses: 70.4%

Higher/Lower Difference: -6.1%

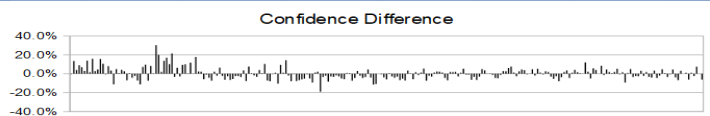
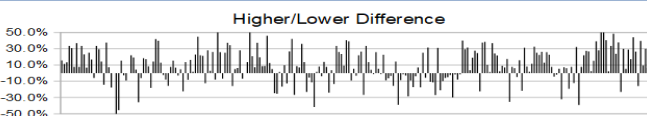
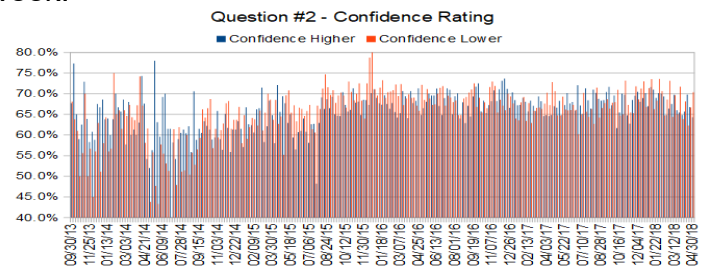
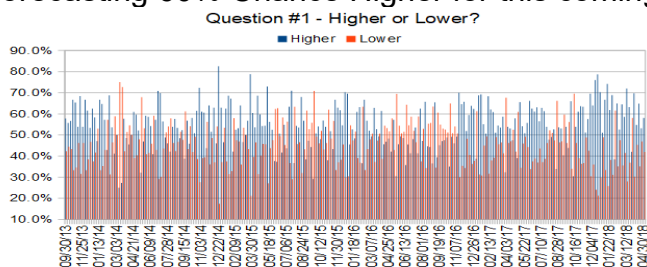
**Responses Submitted This Week: 62**

**26-Week Average Number of Responses: 50.0**

**TimingResearch Crowd Forecast Prediction: 60% Chance Higher**

*This prediction is an attempt by the editor of this newsletter to use the full 4+ year history of data collected from this project to forecast a probability estimate for whether this week's sentiment is going to be correct and ultimately what the markets will do this coming week.*

Details: Last week's majority sentiment was 53.1% Higher, and the Crowd Forecast Indicator prediction was 61% Chance Higher; the S&P500 closed 0.21% Lower for the week. This week's majority sentiment from the survey is 58.1% Higher with a greater average confidence from those who responded Lower. Similar conditions have been observed 15 times in the previous 239 weeks, with the majority sentiment being correct 60% of the time, with an average S&P500 move for the week of 0.64% Higher. Based on that history, the TimingResearch Crowd Forecast Indicator is forecasting 60% Chance Higher for this coming week.



Raw Data Page (raw data files include full history spreadsheet and the above charts): [TimingResearch.com/data](http://TimingResearch.com/data).

# TimingResearch Crowd Forecast News Report #240 (04/29/2018) - Page 2/8

[Monday, 1PM ET: Top Trading Exports Discuss This Report! Click Here To Learn More.](#)

Full Weekly Results (full version of this chart available in the [raw data](#) spreadsheet for this week, "Date" field below lists the Monday of the week being predicted).

Overall Sentiment All-Time "Correct" Percentage: 50.2%

Overall Sentiment 52-Week "Correct" Percentage: 51.0%

Overall Sentiment 12-Week "Correct" Percentage: 45.5%

Only the previous 52 weeks of data are shown below, please [download the raw data](#) to see the full range of past data.

189	05/08/17	65.6%	34.4%	31.1%	67.1%	68.3%	64.8%	3.5%	Higher	64%	Higher	Lower	No	0	0	49.7%	2,399.94	2,390.90	-9.04	-0.38%
190	05/15/17	54.1%	45.9%	8.2%	66.9%	64.9%	69.3%	-4.4%	Higher	55%	Higher	Lower	No	0	0	49.5%	2,393.98	2,381.73	-12.25	-0.51%
191	05/22/17	50.8%	49.2%	1.6%	66.7%	67.3%	66.2%	1.1%	Higher	59%	Higher	Higher	Yes	1	1	49.7%	2,387.21	2,415.82	28.61	1.20%
192	05/29/17	55.7%	44.3%	11.4%	68.3%	70.1%	66.0%	4.2%	Higher	62%	Higher	Higher	Yes	1	1	50.0%	2,411.67	2,439.07	27.40	1.14%
193	06/05/17	66.2%	33.8%	32.4%	67.1%	67.7%	66.0%	1.6%	Higher	62%	Higher	Lower	No	0	0	49.7%	2,437.83	2,431.77	-6.06	-0.25%
194	06/12/17	62.5%	37.5%	25.0%	67.7%	68.0%	67.3%	0.7%	Higher	60%	Higher	Higher	Yes	1	1	50.0%	2,425.88	2,433.15	7.27	0.30%
195	06/19/17	61.1%	38.9%	22.2%	66.0%	65.9%	66.1%	-0.2%	Higher	52%	Lower	Lower	No	0	0	49.7%	2,442.55	2,438.30	-4.25	-0.17%
196	06/26/17	63.1%	36.9%	26.2%	67.7%	72.1%	60.2%	11.9%	Higher	69%	Higher	Lower	No	0	0	49.5%	2,443.32	2,423.41	-19.91	-0.81%
197	07/03/17	56.5%	43.5%	12.9%	66.2%	67.1%	65.0%	2.1%	Higher	61%	Higher	Lower	No	0	0	49.2%	2,431.39	2,425.18	-6.21	-0.26%
198	07/10/17	62.9%	37.1%	25.7%	67.0%	65.1%	70.2%	-5.1%	Higher	55%	Lower	Higher	Yes	1	1	49.5%	2,424.51	2,459.27	34.76	1.43%
199	07/17/17	61.3%	38.7%	22.6%	69.1%	71.3%	65.6%	5.7%	Higher	64%	Higher	Higher	Yes	1	1	49.7%	2,459.50	2,472.54	13.04	0.53%
200	07/24/17	53.8%	46.2%	7.7%	66.5%	68.4%	64.4%	4.0%	Higher	61%	Higher	Higher	Yes	1	1	50.0%	2,472.04	2,472.10	0.06	0.00%
201	07/31/17	47.8%	52.2%	-4.5%	66.3%	66.4%	66.3%	0.1%	Lower	57%	Lower	Higher	No	0	1	49.7%	2,475.94	2,476.83	0.89	0.04%
202	08/07/17	49.0%	51.0%	-2.0%	66.8%	71.0%	62.7%	8.3%	Lower	53%	Higher	Lower	Yes	1	0	50.0%	2,477.14	2,441.32	-35.82	-1.45%
203	08/14/17	52.6%	47.4%	5.3%	70.8%	70.2%	71.5%	-1.3%	Higher	52%	Lower	Lower	No	0	0	49.7%	2,454.96	2,425.55	-29.41	-1.20%
204	08/21/17	33.9%	66.1%	-32.2%	65.8%	68.8%	64.2%	4.5%	Lower	70%	Higher	Higher	No	0	1	49.5%	2,425.50	2,443.05	17.55	0.72%
205	08/28/17	53.6%	46.4%	7.1%	67.5%	68.3%	66.5%	1.8%	Higher	73%	Higher	Higher	Yes	1	1	48.8%	2,447.35	2,476.55	29.20	1.19%
206	09/04/17	53.0%	47.0%	6.1%	68.1%	68.4%	67.7%	0.7%	Higher	75%	Higher	Lower	No	0	0	49.5%	2,470.35	2,461.43	-8.92	-0.36%
207	09/11/17	40.4%	59.6%	-19.3%	69.4%	70.4%	68.7%	1.8%	Lower	73%	Higher	Higher	No	0	1	49.3%	2,474.52	2,500.23	25.71	1.04%
208	09/18/17	53.8%	46.2%	7.7%	69.2%	71.7%	66.4%	5.3%	Higher	68%	Higher	Lower	No	0	0	49.0%	2,502.51	2,502.22	-0.29	-0.01%
209	09/25/17	43.9%	56.1%	-12.3%	67.5%	67.2%	67.8%	-0.6%	Lower	63%	Higher	Higher	No	0	1	48.8%	2,499.39	2,519.36	19.97	0.80%
210	10/02/17	66.0%	34.0%	32.0%	69.0%	69.6%	67.9%	1.6%	Higher	61%	Higher	Higher	Yes	1	1	49.0%	2,521.20	2,549.33	28.13	1.12%
211	10/09/17	30.4%	69.6%	-39.1%	68.4%	61.7%	70.9%	-9.3%	Lower	55%	Higher	Higher	No	0	1	48.8%	2,551.39	2,553.17	1.78	0.07%
212	10/16/17	53.8%	46.2%	7.7%	65.1%	65.5%	64.7%	0.8%	Higher	59%	Higher	Higher	Yes	1	1	49.0%	2,555.57	2,575.21	19.64	0.77%
213	10/23/17	61.0%	39.0%	22.0%	68.1%	70.0%	65.0%	5.0%	Higher	62%	Higher	Higher	Yes	1	1	49.3%	2,578.08	2,581.07	2.99	0.12%
214	10/30/17	63.6%	36.4%	27.3%	70.9%	69.7%	73.2%	-3.4%	Higher	52%	Lower	Higher	Yes	1	1	49.5%	2,577.75	2,587.84	10.09	0.39%
215	11/06/17	63.3%	36.7%	26.7%	65.7%	64.7%	67.3%	-2.5%	Higher	52%	Lower	Lower	No	0	0	49.3%	2,587.47	2,582.30	-5.17	-0.20%
216	11/13/17	51.2%	48.8%	2.3%	64.1%	62.7%	65.5%	-2.8%	Higher	55%	Lower	Higher	Yes	1	1	49.5%	2,576.53	2,578.85	2.32	0.09%
217	11/20/17	57.5%	42.5%	15.0%	67.1%	68.5%	65.3%	3.2%	Higher	60%	Higher	Higher	Yes	1	1	49.8%	2,579.49	2,602.42	22.93	0.89%
218	11/27/17	69.6%	30.4%	39.1%	70.2%	69.5%	71.8%	-2.3%	Higher	63%	Higher	Higher	Yes	1	1	50.0%	2,602.66	2,642.22	39.56	1.52%
219	12/04/17	64.0%	36.0%	28.0%	69.8%	70.5%	68.6%	1.9%	Higher	58%	Higher	Lower	No	0	0	49.8%	2,657.19	2,651.50	-5.69	-0.21%
220	12/11/17	76.0%	24.0%	52.0%	68.8%	68.0%	71.3%	-3.2%	Higher	67%	Higher	Higher	Yes	1	1	50.0%	2,652.19	2,675.81	23.62	0.89%
221	12/18/17	78.7%	21.3%	57.4%	69.8%	68.9%	73.0%	-4.1%	Higher	70%	Higher	Lower	No	0	0	49.8%	2,685.92	2,683.34	-2.58	-0.10%
222	12/25/17	70.2%	29.8%	40.4%	69.2%	70.2%	66.8%	3.4%	Higher	55%	Lower	Lower	No	0	0	49.5%	2,679.09	2,673.61	-5.48	-0.20%
223	01/01/18	51.1%	48.9%	2.2%	69.1%	67.0%	71.4%	-4.4%	Higher	52%	Lower	Higher	Yes	1	1	49.8%	2,683.73	2,743.15	59.42	2.21%
224	01/08/18	66.7%	33.3%	33.3%	72.3%	71.6%	73.5%	-1.9%	Higher	64%	Higher	Higher	Yes	1	1	50.0%	2,742.67	2,786.24	43.57	1.59%
225	01/15/18	74.2%	25.8%	48.4%	69.8%	71.0%	66.3%	4.7%	Higher	73%	Higher	Higher	Yes	1	1	50.2%	2,798.96	2,810.30	11.34	0.41%
226	01/22/18	61.8%	38.2%	23.6%	68.7%	69.0%	68.3%	0.6%	Higher	56%	Higher	Higher	Yes	1	1	50.5%	2,809.16	2,872.87	63.71	2.27%
227	01/29/18	68.9%	31.1%	37.8%	71.2%	70.2%	73.6%	-3.4%	Higher	53%	Lower	Lower	No	0	0	50.2%	2,867.23	2,762.13	-105.10	-3.67%
228	02/05/18	38.5%	61.5%	-23.1%	70.4%	70.0%	70.6%	-0.6%	Lower	58%	Higher	Lower	Yes	1	0	50.4%	2,741.06	2,619.55	-121.51	-4.43%
229	02/12/18	64.9%	35.1%	29.8%	67.7%	69.3%	64.8%	4.6%	Higher	63%	Higher	Higher	Yes	1	1	50.7%	2,636.75	2,732.22	95.47	3.62%
230	02/19/18	52.5%	47.5%	5.1%	66.6%	64.8%	68.6%	-3.7%	Higher	56%	Lower	Higher	Yes	1	1	50.9%	2,722.99	2,747.30	24.31	0.89%
231	02/26/18	64.4%	35.6%	28.9%	68.8%	66.4%	73.1%	-6.8%	Higher	59%	Lower	Lower	No	0	0	50.7%	2,757.37	2,691.25	-66.12	-2.40%
232	03/05/18	58.5%	41.5%	17.1%	66.2%	67.5%	64.4%	3.1%	Higher	64%	Higher	Higher	Yes	1	1	50.9%	2,681.06	2,786.57	105.51	3.94%
233	03/12/18	72.0%	28.0%	44.0%	69.7%	69.7%	69.6%	0.1%	Higher	54%	Lower	Lower	No	0	0	50.7%	2,790.54	2,752.01	-38.53	-1.38%
234	03/19/18	63.2%	36.8%	26.3%	65.5%	66.0%	65.0%	1.0%	Higher	57%	Higher	Lower	No	0	0	50.4%	2,741.38	2,588.26	-153.12	-5.59%
235	03/26/18	42.0%	58.0%	-16.0%	69.1%	65.5%	71.7%	-6.2%	Lower	80%	Higher	Higher	No	0	1	50.2%	2,619.35	2,640.87	21.52	0.82%
236	04/02/18	69.8%	30.2%	39.5%	64.5%	64.8%	63.9%	1.0%	Higher	64%	Lower	Lower	No	0	0	50.0%	2,633.45	2,604.47	-28.98	-1.10%
237	04/09/18	54.7%	45.3%	9.4%	66.8%	65.7%	68.1%	-2.4%	Higher	53%	Higher	Higher	Yes	1	1	50.2%	2,617.18	2,656.30	39.12	1.49%
238	04/16/18	64.9%	35.1%	29.7%	67.2%	69.8%	62.3%	7.5%	Higher	69%	Higher	Higher	Yes	1	1	50.4%	2,670.10	2,670.14	0.04	0.00%
239	04/23/18	53.1%	46.9%	6.3%	66.7%	66.8%	66.7%	0.1%	Higher	61%	Higher	Lower	No	0	0	50.2%	2,675.40	2,669.91	-5.49	-0.21%
240	04/30/18	58.1%	41.9%	16.1%	66.9%	64.3%	70.4%	-6.1%	Higher	60%	Higher	???	???	???	???	???	???	???	???	???

Weekly Reports Page: [TimingResearch.com/reports](http://TimingResearch.com/reports)

Raw Data Page: [TimingResearch.com/rawdata](http://TimingResearch.com/rawdata)

Current Survey Page: [TimingResearch.com/currentsurvey](http://TimingResearch.com/currentsurvey)

Any feedback email: [news@timingresearch.com](mailto:news@timingresearch.com)

*NOTE: The following open-ended answers are solely the opinions of the anonymous respondents to this survey. Responses are mostly unedited, but some have been reformatted slightly for to make them easier to read. Some irrelevant responses (e.g. "none"), or anything obviously fake, or copy and pasted responses have been omitted. All-caps responses have been changed to all lowercase. All responses for each week, unedited, are available in the raw data spreadsheets at [TimingResearch.com/data](http://TimingResearch.com/data).*

**Question #3. For your answer to Question #1, please share what specific reason(s) you think the S&P500 will be heading the direction you chose.**

### **“Higher” Respondent Answers:**

- possible end of hostilities on the korean peninsula
- I think it will be lower on Monday and return to the upper part of the range by Friday. Higher, but not by a lot.
- Tough one this week. Suspect markets reaction to APPL's earnings to lead the move. Underlying market indicators seem to be slightly bullish.
- earnings
- Continue current uptrend.
- trend
- interest rates
- China. trade news N.Korea news
- graph shows breakout up short term couple days
- Going into May"
- geo-politics calming down.
- Good earnings
- good company earnings reports this week
- ABC sideways
- I find that the market moves are positive the last few days of the month / first few days of the new month..
- Earnings & GDP are pretty good. S&P is far enough down from its January peak to run up some.
- Peace breaking out? Not likely.
- Bounce
- More good news across the world this week. I think that would lead to a little optimism form everyone.
- bear rally not compleat
- Closed at the 20 sma. with 3 sma all curving up. Dragon fly doji 3 days ago

### **“Lower” Respondent Answers:**

- Its getting to be summertime big money goes on vacation
- Summertime soon big ☹️ managers on vacation
- Less than average results week and an Apple fall
- yield curve begins to flatten

[Monday, 1PM ET: Top Trading Exports Discuss This Report! Click Here To Learn More.](#)

---

- Good is the bad where stellar earnings & revenues are met with panic selling mostly because of the possibility of rising interest rates, curve fattening & because it just can't get any better than this. In spite of wide swings, the market returned to the expected range this week ending flat when it could have exploded higher. The market continues to consolidate & work off the correction & depress investors. When the weak hands go, the market will rise I hope. For now, go to the beach & wait.
- Sim
- needs to complete wave four
- The downside correction will continue until we reach a selling climax. Just get me out!!!
- General market is topping out and now that earnings season surprises are coming out and are being met with poor stock performance, Im concerned about a top.
- chart
- Revised answer from previous: I believe in light of the Fed policy on interest rates and considering the overall effect will be slow but a gradual rise in inflation along with interest rates, I now believe the stock market is destined to be locked into sideways to downward action probably for the rest of this year. I'll have to re-evaluate come late fall/winter. In the meantime I do believe we will see at least one severe drop (maybe a crash) by the end of the summer.
- intuition
- Mixed earnings and Apple failing
- The market is undecided
- May Seasonality, negative response to good earnings, FOMC comments this week, continuing interest rate and bond yield curve concerns. Do not expect AAPL earnings to move market up.

### Question #4. What advice would you give and/or what resources would you recommend to someone who is new to trading?

- Stay away and watch company releases and their effects on market
- all is new for me
- learn as much as possible and trade in a practice account before going live
- do your homework and if you dont have great money management discipline, DONT TRADE
- Go drive a truck.
- don't trade with anything you aren't prepared to put on a table, douse with gasoline, and set on fire.
- Tom Boley on stock charts
- Paper trade for 1 year
- Caution due to sideways volatile character of markets now.
- income and safety. Sink or Swim webinars
- Market Gauge, Dr. Barry Burns, Roger Scott.
- Don't use OTA
- hedge all trades wit options puts and calls
- you tube
- Lots of studying, lots of reading charts, lots of paper practice, start small. keep records
- Cut your losses early. Sell spikes
- market wizards and How to make money in stocks
- stay in cash or tbills
- Follow your trading rules
- learn
- stick to your stops
- Start with paper trades. Then move carefully into light trading, avoiding over-trading.
- Trade small until consistent with properly managing gains / losses & read Trading for a Living to understand the fundamentals / importance of managing risk, position sizing, etc.
- Start with a good amount of money. At least \$10,000
- Sim
- at least a year of practice and then expect surprises
- trade small
- stay out this week
- Try Chaiken Analytics for starters.

## **BONUS: What is your pick or picks for the 2018 Kentucky Derby?**

- Aiden O'Briens horse, 5/2 here 10-12/1 in US
- I predict a horse will win. In other words, haven't a clue.
- not know
- Lone Sailor
- i'm betting a horse will win
- don't do horses
- Not following the KD. No idea.
- 2019
- Dont do horses
- Retained Earnings

### Question #5. Additional Comments/Questions/Suggestions?

Thank you for all the feedback, feel free to [contact us](#) at any time with any other questions or comments.

- I am better at horse racing than stocks etc
- thank you
- most platforms help you lose money
- Sim
- When peace comes from NK, instead of giving Trump the Nobel Peace Prize, they will probably give it to Un or to Moon or to Xi or to some clown in Iran and that will be the end of the Nobel Prize forever.

## Recently Closed Predictions

**Week 171, 01/02/17 Report** - In 2016 the S&P500 opened at 2,038.20 and closed at 2,238.83. Where do you think the S&P500 will close in 2017?

Average: 2,318.53

**Actual Close: 2,673.61** (15% higher than the average of all predictions)

## Standing Predictions

Below are some of the one-time prediction-type questions asked in previous weeks that have not been finalized yet or have been finalized recently. Suggest a future question [here](#).

**Week 171, 01/21/18 Report** - The S&P500 closed for 2017 at 2,673.61. Where do you think it will close for 2018?

- 57.8%: Higher 2-20%.
- 15.6%: Lower 2-20%.
- 13.3%: Higher 21% or more.
- 6.7%: Unchanged. Less than 2% change Higher or Lower.
- 6.7%: Lower 21% or more.