

[Monday, 1PM ET: Top Trading Experts Discuss This Report! Click Here To Learn More.](#)

Question #1. Which direction do you think the S&P500 index will move from this coming Monday's open to Friday's close (May 7th to May 11th)?

(The order of possible responses to this question on the survey were randomized for each viewer.)

Higher: 57.5%

Lower: 42.5%

Higher/Lower Difference: 15.0%

Question #2. Rate your confidence in your answer to Question #2 by estimating the probability you have correctly predicted next week's market move.

Average of All Responses: 66.5%

Average For "Higher" Responses: 68.5%

Average For "Lower" Responses: 63.8%

Higher/Lower Difference: 4.7%

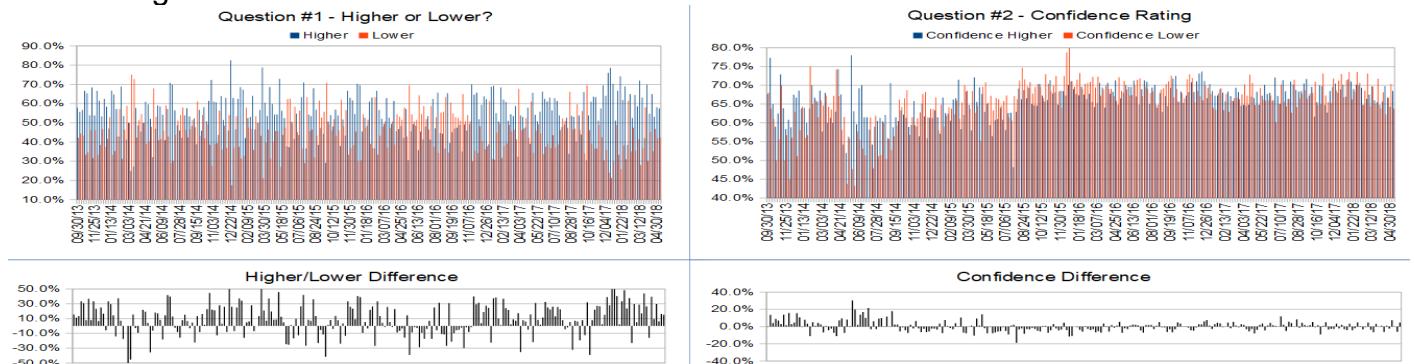
Responses Submitted This Week: 43

26-Week Average Number of Responses: 49.2

TimingResearch Crowd Forecast Prediction: 67% Chance Higher

This prediction is an attempt by the editor of this newsletter to use the full 4+ year history of data collected from this project to forecast a probability estimate for whether this week's sentiment is going to be correct and ultimately what the markets will do this coming week.

Details: Last week's majority sentiment from the survey was 58.1% Higher, and the Crowd Forecast Indicator prediction was 60% Chance Higher; the S&P500 closed 0.45% Lower for the week. This week's majority sentiment from the survey is 57.5% Higher with a greater average confidence from those who responded Higher. Similar conditions have been observed 15 times in the previous 240 weeks, with the majority sentiment being correct 67% of the time, with an average S&P500 move of 0.79% Higher for the week. Based on that history, the TimingResearch Crowd Forecast Indicator is forecasting a 67% Chance that the S&P500 is going to move Higher this coming week.



Raw Data Page (raw data files include full history spreadsheet and the above charts): TimingResearch.com/data.

TimingResearch Crowd Forecast News Report #241 (05/06/2018) - Page 2/6

[Monday, 1PM ET: Top Trading Experts Discuss This Report! Click Here To Learn More.](#)

Full Weekly Results (full version of this chart available in the [raw data](#) spreadsheet for this week, "Date" field below lists the Monday of the week being predicted).

Overall Sentiment All-Time "Correct" Percentage: 50.0%

Overall Sentiment 52-Week "Correct" Percentage: 51.0%

Overall Sentiment 12-Week "Correct" Percentage: 36.4%

Only the previous 52 weeks of data are shown below, please [download the raw data](#) to see the full range of past data.

| | | | | | | | | | | | | | | | | | | | | |
|-----|----------|-------|-------|--------|-------|-------|-------|-------|--------|-----|--------|--------|-----|-----|-----|-------|----------|----------|---------|--------|
| 190 | 05/15/17 | 54.1% | 45.9% | 8.2% | 66.9% | 64.9% | 69.3% | -4.4% | Higher | 55% | Higher | Lower | No | 0 | 0 | 49.5% | 2,393.98 | 2,381.73 | -12.25 | -0.51% |
| 191 | 05/22/17 | 50.8% | 49.2% | 1.6% | 66.7% | 67.3% | 66.2% | 1.1% | Higher | 59% | Higher | Higher | Yes | 1 | 1 | 49.7% | 2,387.21 | 2,415.82 | 28.61 | 1.20% |
| 192 | 05/29/17 | 55.7% | 44.3% | 11.4% | 68.3% | 70.1% | 66.0% | 4.2% | Higher | 62% | Higher | Higher | Yes | 1 | 1 | 50.0% | 2,411.67 | 2,439.07 | 27.40 | 1.14% |
| 193 | 06/05/17 | 66.2% | 33.8% | 32.4% | 67.1% | 67.7% | 66.0% | 1.6% | Higher | 62% | Higher | Lower | No | 0 | 0 | 49.7% | 2,437.83 | 2,431.77 | -6.06 | -0.25% |
| 194 | 06/12/17 | 62.5% | 37.5% | 25.0% | 67.7% | 68.0% | 67.3% | 0.7% | Higher | 60% | Higher | Higher | Yes | 1 | 1 | 50.0% | 2,425.88 | 2,433.15 | 7.27 | 0.30% |
| 195 | 06/19/17 | 61.1% | 38.9% | 22.2% | 66.0% | 65.9% | 66.1% | -0.2% | Higher | 52% | Lower | Lower | No | 0 | 0 | 49.7% | 2,442.55 | 2,438.30 | -4.25 | -0.17% |
| 196 | 06/26/17 | 63.1% | 36.9% | 26.2% | 67.7% | 72.1% | 60.2% | 11.9% | Higher | 69% | Higher | Lower | No | 0 | 0 | 49.5% | 2,443.32 | 2,423.41 | -19.91 | -0.81% |
| 197 | 07/03/17 | 56.5% | 43.5% | 12.9% | 66.2% | 67.1% | 65.0% | 2.1% | Higher | 61% | Higher | Lower | No | 0 | 0 | 49.2% | 2,431.39 | 2,425.18 | -6.21 | -0.26% |
| 198 | 07/10/17 | 62.9% | 37.1% | 25.7% | 67.0% | 65.1% | 70.2% | -5.1% | Higher | 55% | Lower | Higher | Yes | 1 | 1 | 49.5% | 2,424.51 | 2,459.27 | 34.76 | 1.43% |
| 199 | 07/17/17 | 61.3% | 38.7% | 22.6% | 69.1% | 71.3% | 65.6% | 5.7% | Higher | 64% | Higher | Higher | Yes | 1 | 1 | 49.7% | 2,459.50 | 2,472.54 | 13.04 | 0.53% |
| 200 | 07/24/17 | 53.8% | 46.2% | 7.7% | 66.5% | 68.4% | 64.4% | 4.0% | Higher | 61% | Higher | Higher | Yes | 1 | 1 | 50.0% | 2,472.04 | 2,472.10 | 0.06 | 0.00% |
| 201 | 07/31/17 | 47.8% | 52.2% | -4.5% | 66.3% | 66.4% | 66.3% | 0.1% | Lower | 57% | Lower | Higher | No | 0 | 1 | 49.7% | 2,475.94 | 2,476.83 | 0.89 | 0.04% |
| 202 | 08/07/17 | 49.0% | 51.0% | -2.0% | 66.8% | 71.0% | 62.7% | 8.3% | Lower | 53% | Higher | Lower | Yes | 1 | 0 | 50.0% | 2,477.14 | 2,441.32 | -35.82 | -1.45% |
| 203 | 08/14/17 | 52.6% | 47.4% | 5.3% | 70.8% | 70.2% | 71.5% | -1.3% | Higher | 52% | Lower | Lower | No | 0 | 0 | 49.7% | 2,454.96 | 2,425.55 | -29.41 | -1.20% |
| 204 | 08/21/17 | 33.9% | 66.1% | -32.2% | 65.8% | 68.8% | 64.2% | 4.5% | Lower | 70% | Higher | Higher | No | 0 | 1 | 49.5% | 2,425.50 | 2,443.05 | 17.55 | 0.72% |
| 205 | 08/28/17 | 53.6% | 46.4% | 7.1% | 67.5% | 68.3% | 66.5% | 1.8% | Higher | 73% | Higher | Higher | Yes | 1 | 1 | 49.8% | 2,447.35 | 2,476.55 | 29.20 | 1.19% |
| 206 | 09/04/17 | 53.0% | 47.0% | 6.1% | 68.1% | 68.4% | 67.7% | 0.7% | Higher | 75% | Higher | Lower | No | 0 | 0 | 49.5% | 2,470.35 | 2,461.43 | -8.92 | -0.36% |
| 207 | 09/11/17 | 40.4% | 59.6% | -19.3% | 69.4% | 70.4% | 68.7% | 1.8% | Lower | 73% | Higher | Higher | No | 0 | 1 | 49.3% | 2,474.52 | 2,500.23 | 25.71 | 1.04% |
| 208 | 09/18/17 | 53.8% | 46.2% | 7.7% | 69.2% | 71.7% | 66.4% | 5.3% | Higher | 68% | Higher | Lower | No | 0 | 0 | 49.0% | 2,502.51 | 2,502.22 | -0.29 | -0.01% |
| 209 | 09/25/17 | 43.9% | 56.1% | -12.3% | 67.5% | 67.2% | 67.8% | -0.6% | Lower | 63% | Higher | Higher | No | 0 | 1 | 48.8% | 2,499.39 | 2,519.36 | 19.97 | 0.80% |
| 210 | 10/02/17 | 66.0% | 34.0% | 32.0% | 69.0% | 69.6% | 67.9% | 1.6% | Higher | 61% | Higher | Higher | Yes | 1 | 1 | 49.0% | 2,521.20 | 2,549.33 | 28.13 | 1.12% |
| 211 | 10/09/17 | 30.4% | 69.6% | -39.1% | 68.4% | 61.7% | 70.9% | -9.3% | Lower | 55% | Higher | Higher | No | 0 | 1 | 48.8% | 2,551.39 | 2,553.17 | 1.78 | 0.07% |
| 212 | 10/16/17 | 53.8% | 46.2% | 7.7% | 65.1% | 65.5% | 64.7% | 0.8% | Higher | 59% | Higher | Higher | Yes | 1 | 1 | 49.0% | 2,555.57 | 2,575.21 | 19.64 | 0.77% |
| 213 | 10/23/17 | 61.0% | 39.0% | 22.0% | 68.1% | 70.0% | 65.0% | 5.0% | Higher | 62% | Higher | Higher | Yes | 1 | 1 | 49.3% | 2,578.08 | 2,581.07 | 2.99 | 0.12% |
| 214 | 10/30/17 | 63.6% | 36.4% | 27.3% | 70.9% | 69.7% | 73.2% | -3.4% | Higher | 52% | Lower | Higher | Yes | 1 | 1 | 49.5% | 2,577.75 | 2,587.84 | 10.09 | 0.39% |
| 215 | 11/06/17 | 63.3% | 36.7% | 26.7% | 65.7% | 64.7% | 67.3% | -2.5% | Higher | 52% | Lower | Lower | No | 0 | 0 | 49.3% | 2,587.47 | 2,582.30 | -5.17 | -0.20% |
| 216 | 11/13/17 | 51.2% | 48.8% | 2.3% | 64.1% | 62.7% | 65.5% | -2.8% | Higher | 55% | Lower | Higher | Yes | 1 | 1 | 49.5% | 2,576.53 | 2,578.85 | 2.32 | 0.09% |
| 217 | 11/20/17 | 57.5% | 42.5% | 15.0% | 67.1% | 68.5% | 65.3% | 3.2% | Higher | 60% | Higher | Higher | Yes | 1 | 1 | 49.8% | 2,579.49 | 2,602.42 | 22.93 | 0.89% |
| 218 | 11/27/17 | 69.6% | 30.4% | 39.1% | 70.2% | 69.5% | 71.8% | -2.3% | Higher | 63% | Higher | Higher | Yes | 1 | 1 | 50.0% | 2,602.66 | 2,642.22 | 39.56 | 1.52% |
| 219 | 12/04/17 | 64.0% | 36.0% | 28.0% | 69.8% | 70.5% | 68.6% | 1.9% | Higher | 58% | Higher | Lower | No | 0 | 0 | 49.8% | 2,657.19 | 2,651.50 | -5.69 | -0.21% |
| 220 | 12/11/17 | 76.0% | 24.0% | 52.0% | 68.8% | 68.0% | 71.3% | -3.2% | Higher | 67% | Higher | Higher | Yes | 1 | 1 | 50.0% | 2,652.19 | 2,675.81 | 23.62 | 0.89% |
| 221 | 12/18/17 | 78.7% | 21.3% | 57.4% | 69.8% | 68.9% | 73.0% | -4.1% | Higher | 70% | Higher | Lower | No | 0 | 0 | 49.8% | 2,685.92 | 2,683.34 | -2.58 | -0.10% |
| 222 | 12/25/17 | 70.2% | 29.8% | 40.4% | 69.2% | 70.2% | 66.8% | 3.4% | Higher | 55% | Lower | Lower | No | 0 | 0 | 49.5% | 2,679.09 | 2,673.61 | -5.48 | -0.20% |
| 223 | 01/01/18 | 51.1% | 48.9% | 2.2% | 69.1% | 67.0% | 71.4% | -4.4% | Higher | 52% | Lower | Higher | Yes | 1 | 1 | 49.8% | 2,683.73 | 2,743.15 | 59.42 | 2.21% |
| 224 | 01/08/18 | 66.7% | 33.3% | 33.3% | 72.3% | 71.6% | 73.5% | -1.9% | Higher | 64% | Higher | Higher | Yes | 1 | 1 | 50.0% | 2,742.67 | 2,786.24 | 43.57 | 1.59% |
| 225 | 01/15/18 | 74.2% | 25.8% | 48.4% | 69.8% | 71.0% | 66.3% | 4.7% | Higher | 73% | Higher | Higher | Yes | 1 | 1 | 50.2% | 2,798.96 | 2,810.30 | 11.34 | 0.41% |
| 226 | 01/22/18 | 61.8% | 38.2% | 23.6% | 68.7% | 69.0% | 68.3% | 0.6% | Higher | 56% | Higher | Higher | Yes | 1 | 1 | 50.5% | 2,809.16 | 2,872.87 | 63.71 | 2.27% |
| 227 | 01/29/18 | 68.9% | 31.1% | 37.8% | 71.2% | 70.2% | 73.6% | -3.4% | Higher | 53% | Lower | Lower | No | 0 | 0 | 50.2% | 2,867.23 | 2,762.13 | -105.10 | -3.67% |
| 228 | 02/05/18 | 38.5% | 61.5% | -23.1% | 70.4% | 70.0% | 70.6% | -0.6% | Lower | 58% | Higher | Lower | Yes | 1 | 1 | 50.4% | 2,741.06 | 2,619.55 | -121.51 | -4.43% |
| 229 | 02/12/18 | 64.9% | 35.1% | 29.8% | 67.7% | 69.3% | 64.8% | 4.6% | Higher | 63% | Higher | Higher | Yes | 1 | 1 | 50.7% | 2,636.75 | 2,732.22 | 95.47 | 3.62% |
| 230 | 02/19/18 | 52.5% | 47.5% | 5.1% | 66.6% | 64.8% | 68.6% | -3.7% | Higher | 56% | Lower | Higher | Yes | 1 | 1 | 50.9% | 2,722.99 | 2,747.30 | 24.31 | 0.89% |
| 231 | 02/26/18 | 64.4% | 35.6% | 28.9% | 68.8% | 66.4% | 73.1% | -6.8% | Higher | 59% | Lower | Lower | No | 0 | 0 | 50.7% | 2,757.37 | 2,691.25 | -66.12 | -2.40% |
| 232 | 03/05/18 | 58.5% | 41.5% | 17.1% | 66.2% | 67.5% | 64.4% | 3.1% | Higher | 64% | Higher | Higher | Yes | 1 | 1 | 50.9% | 2,681.06 | 2,786.57 | 105.51 | 3.94% |
| 233 | 03/12/18 | 72.0% | 28.0% | 44.0% | 69.7% | 69.6% | 69.6% | 0.1% | Higher | 54% | Lower | Lower | No | 0 | 0 | 50.7% | 2,790.54 | 2,752.01 | -38.53 | -1.38% |
| 234 | 03/19/18 | 63.2% | 36.8% | 26.3% | 65.5% | 66.0% | 65.0% | 1.0% | Higher | 57% | Higher | Lower | No | 0 | 0 | 50.4% | 2,741.38 | 2,588.26 | -153.12 | -5.59% |
| 235 | 03/26/18 | 42.0% | 58.0% | -16.0% | 69.1% | 65.5% | 71.7% | -6.2% | Lower | 80% | Higher | Higher | No | 0 | 1 | 50.2% | 2,619.35 | 2,604.87 | -14.48 | -0.55% |
| 236 | 04/02/18 | 69.8% | 30.2% | 39.5% | 64.5% | 64.8% | 63.9% | 1.0% | Higher | 64% | Lower | Lower | No | 0 | 0 | 50.0% | 2,633.45 | 2,604.47 | -28.98 | -1.10% |
| 237 | 04/09/18 | 54.7% | 45.3% | 9.4% | 66.8% | 65.7% | 68.1% | -2.4% | Higher | 53% | Higher | Higher | Yes | 1 | 1 | 50.2% | 2,617.18 | 2,656.30 | 39.12 | 1.49% |
| 238 | 04/16/18 | 64.9% | 35.1% | 29.7% | 67.2% | 69.8% | 62.3% | 7.5% | Higher | 69% | Higher | Higher | Yes | 1 | 1 | 50.4% | 2,670.10 | 2,670.14 | 0.04 | 0.00% |
| 239 | 04/23/18 | 53.1% | 46.9% | 6.3% | 66.7% | 66.8% | 66.7% | 0.1% | Higher | 61% | Higher | Lower | No | 0 | 0 | 50.2% | 2,675.40 | 2,669.91 | -5.49 | -0.21% |
| 240 | 04/30/18 | 58.1% | 41.9% | 16.1% | 66.9% | 64.3% | 70.4% | -6.1% | Higher | 60% | Higher | Lower | No | 0 | 0 | 50.0% | 2,675.47 | 2,663.42 | -12.05 | -0.45% |
| 241 | 05/07/18 | 57.5% | 42.5% | 15.0% | 66.5% | 68.5% | 63.8% | 4.7% | Higher | ??? | ??? | ??? | ??? | ??? | ??? | ??? | ??? | ??? | ??? | ??? |

Weekly Reports Page: TimingResearch.com/reports

Raw Data Page: TimingResearch.com/rawdata

Current Survey Page: TimingResearch.com/currentsurvey

Any feedback email: news@timingresearch.com

NOTE: The following open-ended answers are solely the opinions of the anonymous respondents to this survey. Responses are mostly unedited, but some have been reformatted slightly for to make them easier to read. Some irrelevant responses (e.g. "none"), or anything obviously fake, or copy and pasted responses have been omitted. All-caps responses have been changed to all lowercase. All responses for each week, unedited, are available in the raw data spreadsheets at TimingResearch.com/data.

Question #3. For your answer to Question #1, please share what specific reason(s) you think the S&P500 will be heading the direction you chose.

“Higher” Respondent Answers:

- Improving market internals & recent bounce off of the 200d ma again.
- Trump administration
- Tariffs, trade wars abating? Oil higher ? due to war-mongering ? What goes down, comes back up ?
- Futures have been headed higher!
- Sim motivo
- good economic news
- Elliott Wave
- On Friday, the jobs number was low, the market opened low; then the bulls took over. The "sell-in-May" crowd is losing credibility for this year. Up we go.
- why not?
- Friday's action
- I see no reason why it shouldn't go up. Of course anything can happen, I'm waiting for some of the pot stocks to go up.
- as long as the Fed continues to print money, they'll keep dumping it in stock market
- dragon fly doji and bullish engulf. candle, good williams configuration and positive RSI

“Lower” Respondent Answers:

- short term descending channel 7 volatility
- uncertainty
- Trend line down fibs
- Mainstream news is not covering the Syrian situation. Seems it is about to blow up. Equity index is will not like that. Gold range 1303 1354.
- The downside correction will continue until we have a selling climax. Just get me out!!!
- Downtrend unbroken Multiple resistance points
- Technical and Sell in May go away ..
- Dow. S & P grinding lower
- completion demark daily 13 cd low this week and 5/9 Gann sq of 9 ...lot lower in 2550 range es

Question #4. Who or what first inspired you to become a trader?

- The idea of being able to support myself & the family independently of an employer; and even better, without the need to support / satisfy others (customers, bosses, etc.).
- Mom
- Learnt that 85 % of mutual funds lose. -A close relative lost \$750,000 in the tech crash & he had a financial advisor.
- Tired of low returns
- Antônio Cleber
- I'm naturally good with numbers. The trading game has always held some fascination for me.
- Porter Stansberry
- Dad
- Wanting to make money
- stumbled into it
- Poor and not enough money
- To have a retirement pool big enough to retire early
- Jim Wade
- Extra income
- Grade 11 High School teacher
- I was a commodity broker for 17 years.
- Louis Rukeyser
- Great life style and freedom of work without boss
- buddy a broken

[Monday, 1PM ET: Top Trading Experts Discuss This Report! Click Here To Learn More.](#)

Question #5. Additional Comments/Questions/Suggestions?

Thank you for all the feedback, feel free to [contact us](#) at any time with any other questions or comments.

- Despesa cartão motivo
- started in 1979

Recently Closed Predictions

Week 171, 01/02/17 Report - In 2016 the S&P500 opened at 2,038.20 and closed at 2,238.83. Where do you think the S&P500 will close in 2017?

Average: 2,318.53

Actual Close: 2,673.61 (15% higher than the average of all predictions)

Standing Predictions

Below are some of the one-time prediction-type questions asked in previous weeks that have not been finalized yet or have been finalized recently. Suggest a future question [here](#).

Week 171, 01/21/18 Report - The S&P500 closed for 2017 at 2,673.61. Where do you think it will close for 2018?

- 57.8%: Higher 2-20%.
- 15.6%: Lower 2-20%.
- 13.3%: Higher 21% or more.
- 6.7%: Unchanged. Less than 2% change Higher or Lower.
- 6.7%: Lower 21% or more.