

[Monday, 1PM ET: Top Trading Experts Discuss This Report! Click Here To Learn More.](#)

Question #1. Which direction do you think the S&P500 index will move from this coming Monday's open to Friday's close (June 25th to June 29th)?

(The order of possible responses to this question on the survey were randomized for each viewer.)

Higher: 44.7%

Lower: 55.3%

Higher/Lower Difference: -10.5%

Question #2. Rate your confidence in your answer to Question #2 by estimating the probability you have correctly predicted next week's market move.

Average of All Responses: 64.7%

Average For "Higher" Responses: 63.2%

Average For "Lower" Responses: 66.0%

Higher/Lower Difference: -2.7%

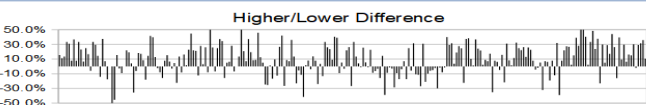
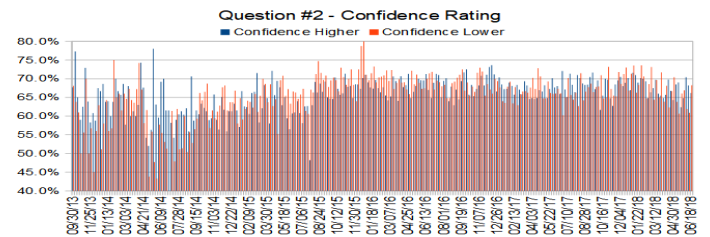
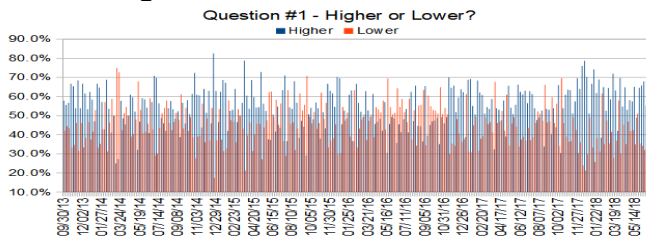
Responses Submitted This Week: 41

26-Week Average Number of Responses: 49.5

TimingResearch Crowd Forecast Prediction: 59% Chance Higher

This prediction is an attempt by the editor of this newsletter to use the full 4+ year history of data collected from this project to forecast a probability estimate for whether this week's sentiment is going to be correct and ultimately what the markets will do this coming week.

Details: Last week's majority sentiment from the survey was 55.3% Higher, and the Crowd Forecast Indicator prediction was 53% Chance Lower; the S&P500 closed 0.39% Lower for the week. This week's majority sentiment from the survey is 55.3% Higher with a greater average confidence from those who responded Lower. Similar conditions have been observed 44 times in the previous 247 weeks, with the majority sentiment being correct 59% of the time, with an average S&P500 move of 0.17% Higher for the week. Based on that history, the TimingResearch Crowd Forecast Indicator is forecasting a 59% Chance that the S&P500 is going to move Higher this coming week.



Raw Data Page (raw data files include full history spreadsheet and the above charts): TimingResearch.com/data.

TimingResearch Crowd Forecast News Report #248 (06/24/2018) - Page 2/7

[Monday, 1PM ET: Top Trading Experts Discuss This Report! Click Here To Learn More.](#)

Full Weekly Results (full version of this chart available in the [raw data](#) spreadsheet for this week, "Date" field below lists the Monday of the week being predicted).

Overall Sentiment All-Time "Correct" Percentage: 50.2%

Overall Sentiment 52-Week "Correct" Percentage: 52.9%

Overall Sentiment 12-Week "Correct" Percentage: 54.5%

Only the previous 52 weeks of data are shown below, please [download the raw data](#) to see the full range of past data.

197	07/03/17	56.5%	43.5%	12.9%	66.2%	67.1%	65.0%	2.1%	Higher	61%	Higher	Lower	No	0	0	49.2%	2,431.39	2,425.18	-6.21	-0.26%
198	07/10/17	62.9%	37.1%	25.7%	67.0%	65.1%	70.2%	-5.1%	Higher	55%	Lower	Higher	Yes	1	1	49.5%	2,424.51	2,459.27	34.76	1.43%
199	07/17/17	61.3%	38.7%	22.6%	69.1%	71.3%	65.6%	5.7%	Higher	64%	Higher	Higher	Yes	1	1	49.7%	2,459.50	2,472.54	13.04	0.53%
200	07/24/17	53.8%	46.2%	7.7%	66.5%	68.4%	64.4%	4.0%	Higher	61%	Higher	Higher	Yes	1	1	50.0%	2,472.04	2,472.10	0.06	0.00%
201	07/31/17	47.8%	52.2%	-4.5%	66.3%	66.4%	66.3%	0.1%	Lower	57%	Lower	Higher	No	0	1	49.7%	2,475.94	2,476.83	0.89	0.04%
202	08/07/17	49.0%	51.0%	-2.0%	66.8%	71.0%	62.7%	8.3%	Lower	53%	Higher	Lower	Yes	1	0	50.0%	2,477.14	2,441.32	-35.82	-1.45%
203	08/14/17	52.6%	47.4%	5.3%	70.8%	70.2%	71.5%	-1.3%	Higher	52%	Lower	Lower	No	0	0	49.7%	2,454.96	2,425.55	-29.41	-1.20%
204	08/21/17	33.9%	66.1%	-32.2%	65.8%	68.8%	64.2%	4.5%	Lower	70%	Higher	Higher	No	0	1	49.5%	2,425.50	2,443.05	17.55	0.72%
205	08/28/17	53.6%	46.4%	7.1%	67.5%	68.3%	66.5%	1.8%	Higher	73%	Higher	Higher	Yes	1	1	49.8%	2,447.35	2,476.55	29.20	1.19%
206	09/04/17	53.0%	47.0%	6.1%	68.1%	68.4%	67.7%	0.7%	Higher	75%	Higher	Lower	No	0	0	49.5%	2,470.35	2,461.43	-8.92	-0.36%
207	09/11/17	40.4%	59.6%	-19.3%	69.4%	70.4%	68.7%	1.8%	Lower	73%	Higher	Higher	No	0	1	49.3%	2,474.52	2,500.23	25.71	1.04%
208	09/18/17	53.8%	46.2%	7.7%	69.2%	71.7%	66.4%	5.3%	Higher	68%	Higher	Lower	No	0	0	49.0%	2,502.51	2,502.22	-0.29	-0.01%
209	09/25/17	43.9%	56.1%	-12.3%	67.5%	67.2%	67.8%	-0.6%	Lower	63%	Higher	Higher	No	0	1	48.8%	2,499.39	2,519.36	19.97	0.80%
210	10/02/17	66.0%	34.0%	32.0%	69.0%	69.6%	67.9%	1.6%	Higher	61%	Higher	Higher	Yes	1	1	49.0%	2,521.20	2,549.33	28.13	1.12%
211	10/09/17	30.4%	69.6%	-39.1%	68.4%	61.7%	70.9%	-9.3%	Lower	55%	Higher	Higher	No	0	1	48.8%	2,551.39	2,553.17	1.78	0.07%
212	10/16/17	53.8%	46.2%	7.7%	65.1%	65.5%	64.7%	0.8%	Higher	59%	Higher	Higher	Yes	1	1	49.0%	2,555.57	2,575.21	19.64	0.77%
213	10/23/17	61.0%	39.0%	22.0%	68.1%	70.0%	65.0%	5.0%	Higher	62%	Higher	Higher	Yes	1	1	49.3%	2,578.08	2,581.07	2.99	0.12%
214	10/30/17	63.6%	36.4%	27.3%	70.9%	69.7%	73.2%	-3.4%	Higher	52%	Lower	Higher	Yes	1	1	49.5%	2,577.75	2,587.84	10.09	0.39%
215	11/06/17	63.3%	36.7%	26.7%	65.7%	64.7%	67.3%	-2.5%	Higher	52%	Lower	Lower	No	0	0	49.3%	2,587.47	2,582.30	-5.17	-0.20%
216	11/13/17	51.2%	48.8%	2.3%	64.1%	62.7%	65.5%	-2.8%	Higher	55%	Lower	Higher	Yes	1	1	49.5%	2,576.53	2,578.85	2.32	0.09%
217	11/20/17	57.5%	42.5%	15.0%	67.1%	68.5%	65.3%	3.2%	Higher	60%	Higher	Higher	Yes	1	1	49.8%	2,579.49	2,602.42	22.93	0.89%
218	11/27/17	69.6%	30.4%	39.1%	70.2%	69.5%	71.8%	-2.3%	Higher	63%	Higher	Higher	Yes	1	1	50.0%	2,602.66	2,642.22	39.56	1.52%
219	12/04/17	64.0%	36.0%	28.0%	69.8%	70.5%	68.6%	1.9%	Higher	58%	Higher	Lower	No	0	0	49.8%	2,657.19	2,651.50	-5.69	-0.21%
220	12/11/17	76.0%	24.0%	52.0%	68.8%	68.0%	71.3%	-3.2%	Higher	67%	Higher	Higher	Yes	1	1	50.0%	2,652.19	2,675.81	23.62	0.89%
221	12/18/17	78.7%	21.3%	57.4%	69.8%	68.9%	73.0%	-4.1%	Higher	70%	Higher	Lower	No	0	0	49.8%	2,685.92	2,683.34	-2.58	-0.10%
222	12/25/17	70.2%	29.8%	40.4%	69.2%	70.2%	66.8%	3.4%	Higher	55%	Lower	Lower	No	0	0	49.5%	2,679.09	2,673.61	-5.48	-0.20%
223	01/01/18	51.1%	48.9%	2.2%	69.1%	67.0%	71.4%	-4.4%	Higher	52%	Lower	Higher	Yes	1	1	49.8%	2,683.73	2,743.15	59.42	2.21%
224	01/08/18	66.7%	33.3%	33.3%	72.3%	71.6%	73.5%	-1.9%	Higher	64%	Higher	Higher	Yes	1	1	50.0%	2,742.67	2,786.24	43.57	1.59%
225	01/15/18	74.2%	25.8%	48.4%	69.8%	71.0%	66.3%	4.7%	Higher	73%	Higher	Higher	Yes	1	1	50.2%	2,798.96	2,810.30	11.34	0.41%
226	01/22/18	61.8%	38.2%	23.6%	68.7%	69.0%	68.3%	0.6%	Higher	56%	Higher	Higher	Yes	1	1	50.5%	2,809.16	2,872.87	63.71	2.27%
227	01/29/18	68.9%	31.1%	37.8%	71.2%	70.2%	73.6%	-3.4%	Higher	53%	Lower	Lower	No	0	0	50.2%	2,867.23	2,762.13	-105.10	-3.67%
228	02/05/18	38.5%	61.5%	-23.1%	70.4%	70.0%	70.6%	-0.6%	Lower	58%	Higher	Lower	Yes	1	0	50.4%	2,741.06	2,619.55	-121.51	-4.43%
229	02/12/18	64.9%	35.1%	29.8%	67.7%	69.3%	64.8%	4.6%	Higher	63%	Higher	Higher	Yes	1	1	50.7%	2,636.75	2,732.22	95.47	3.62%
230	02/19/18	52.5%	47.5%	5.1%	66.8%	64.8%	68.6%	-3.7%	Higher	56%	Lower	Higher	Yes	1	1	50.9%	2,722.99	2,747.30	24.31	0.89%
231	02/26/18	64.4%	35.6%	28.9%	68.8%	66.4%	73.1%	-6.8%	Higher	59%	Lower	Lower	No	0	0	50.7%	2,757.37	2,691.25	-66.12	-2.40%
232	03/05/18	58.5%	41.5%	17.1%	66.2%	67.5%	64.4%	3.1%	Higher	64%	Higher	Higher	Yes	1	1	50.9%	2,681.06	2,786.57	105.51	3.94%
233	03/12/18	72.0%	28.0%	44.0%	69.7%	69.7%	69.6%	0.1%	Higher	54%	Lower	Lower	No	0	0	50.7%	2,790.54	2,752.01	-38.53	-1.38%
234	03/19/18	63.2%	36.8%	26.3%	65.5%	66.0%	65.0%	1.0%	Higher	57%	Higher	Lower	No	0	0	50.4%	2,741.38	2,588.26	-153.12	-5.59%
235	03/26/18	42.0%	58.0%	-16.0%	69.1%	65.5%	71.7%	-6.2%	Lower	80%	Higher	Higher	No	0	1	50.2%	2,619.35	2,640.87	21.52	0.82%
236	04/02/18	69.8%	30.2%	39.5%	64.5%	64.8%	63.9%	1.0%	Higher	64%	Lower	Lower	No	0	0	50.0%	2,633.45	2,604.47	-28.98	-1.10%
237	04/09/18	54.7%	45.3%	9.4%	66.8%	65.7%	68.1%	-2.4%	Higher	53%	Higher	Higher	Yes	1	1	50.2%	2,617.18	2,656.30	39.12	1.49%
238	04/16/18	64.9%	35.1%	29.7%	67.2%	69.8%	62.3%	7.5%	Higher	69%	Higher	Higher	Yes	1	1	50.4%	2,670.10	2,670.14	0.04	0.00%
239	04/23/18	53.1%	46.9%	6.3%	66.7%	66.8%	66.7%	0.5%	Higher	61%	Higher	Lower	No	0	0	50.2%	2,675.40	2,669.91	-5.49	-0.21%
240	04/30/18	58.1%	41.9%	16.1%	66.9%	64.3%	70.4%	-6.1%	Higher	60%	Higher	Lower	No	0	0	50.0%	2,675.47	2,663.42	-12.05	-0.45%
241	05/07/18	57.5%	42.5%	15.0%	66.5%	68.5%	63.8%	4.7%	Higher	67%	Higher	Higher	Yes	1	1	50.2%	2,680.34	2,727.72	47.38	1.77%
242	05/14/18	65.1%	34.9%	30.2%	66.1%	69.0%	60.7%	8.3%	Higher	69%	Higher	Lower	No	0	0	50.0%	2,738.47	2,712.97	-25.50	-0.93%
243	05/21/18	48.9%	51.1%	-2.1%	64.3%	62.4%	66.0%	-3.7%	Lower	87%	Higher	Lower	Yes	1	0	50.2%	2,735.39	2,721.33	-14.06	-0.51%
244	05/28/18	64.6%	35.4%	29.2%	65.9%	64.8%	66.9%	-2.1%	Higher	54%	Higher	Higher	Yes	1	1	50.4%	2,705.11	2,734.62	29.51	1.09%
245	06/04/18	65.8%	34.2%	31.6%	67.5%	70.4%	61.9%	8.5%	Higher	58%	Higher	Higher	Yes	1	1	50.6%	2,741.67	2,779.03	37.36	1.36%
246	06/11/18	67.9%	32.1%	35.8%	65.9%	68.2%	60.9%	7.3%	Higher	62%	Higher	Lower	No	0	0	50.4%	2,780.18	2,779.42	-0.76	-0.03%
247	06/18/18	55.3%	44.7%	10.5%	67.1%	66.2%	68.2%	-2.1%	Higher	53%	Lower	Lower	No	0	0	50.2%	2,765.79	2,754.88	-10.91	-0.39%
248	06/25/18	44.7%	55.3%	-10.5%	64.7%	63.2%	66.0%	-2.7%	Lower	55%	Higher	???	???	???	???	???	???	???	???	???

Weekly Reports Page: [TimingResearch.com/reports](#)

Raw Data Page: [TimingResearch.com/rawdata](#)

Current Survey Page: [TimingResearch.com/currentsurvey](#)

Any feedback: [TimingResearch.com/contact](#)

NOTE: The following open-ended answers are solely the opinions of the anonymous respondents to this survey. Responses are mostly unedited, but some have been reformatted slightly for to make them easier to read. Some irrelevant responses (e.g. "none"), or anything obviously fake, or copy and pasted responses have been omitted. All-caps responses have been changed to all lowercase. All responses for each week, unedited, are available in the raw data spreadsheets at TimingResearch.com/data.

Question #3. For your answer to Question #1, please share what specific reason(s) you think the S&P500 will be heading the direction you chose.

“Higher” Respondent Answers:

- Good economic indicators like gross national product could go up with Donald Trump in office
- Traditional end of quarter window dressing especially after the down week last week.
- Seasonality and technical
- Am the proverbial monkey throw'g the dart. Look who is steering the world-ship ! Someone w/ the impulse control of a two-year old.
- Elliott
- history
- It's the trend
- still buying
- risk back on? Draghi forever?
- At bottom of ascending channel

“Lower” Respondent Answers:

- Expecting continued profit taking at end of strong earnings this quarter & before the beginning of next quarter's earning reports. Also: - S&P 500 closing below or at its 20d ema for the last two days - Summation indexes for the S&P 500, NASDAQ, NYSE, & DOW all turning lower - Negative divergence on the NYSE AD Line index
- Downtrend continues. About over per stochastics.
- tariffs
- It's only the FAANGs that are holding up the market while tariffs are pulling it down for now. With favorable trade talks, the market will respond well but good news is not at hand nor will it be until we get closer to the elections. Even if earnings, 3 weeks away, are good, the response will be muted by forward guidance prospects since CEO's will be happy to blame their conservative guidance on trade talks in case they don't meet expectations. It's always safe to blame someone else if you can.
- Adjusting of accounts for end of quarter. Uncertainty about effect of tariffs.
- SPY is nearing oversold territory
- Trump Tariffs - Fed removing liquidity
- political turmoil

[Monday, 1PM ET: Top Trading Experts Discuss This Report! Click Here To Learn More.](#)

- The market is overbought and due for a downside correction.
- The S&P in June couldn't reach up to the March high before starting to fall. There's no upward momentum. Then there are trade wars with the USA versus China, EU, Canada, and Mexico. Doesn't look promising.
- Dow moving below 12 week EMA
- dead cat Friday poor momentum
- The environment is such that not much buying interest. Sell the highs perhaps the best deal. Most likely a low may be made on Wed Thur.
- on going trade conflict US with rest of the world

Question #4. What are the most important trading or investing-related lessons you have learned so far in 2018?

- risk management. if you account is in the 'black ' you still in the trading game.
- Make a profit in cash
- In the world of options, research simple, not- too many legged options; practice in sim-trade on TOS, If a strategy is profitable, use it often along w/ proper position sizing.
- sell premium see value of covered writes / poor man covered calls
- the value of options
- Protect your positions. Limit losses.
- management of existing positions is more important than finding new positions
- If it goes your way increase position.
- There are a lot of traps out there; be careful.
- The power / ability to identify & effectively trade high reward-to-risk opportunities (always committing to planned stop losses & profit targets), with proper position sizing has been paramount to my success so far this year.
- No major bad news
- Be careful.
- Ignore the news
- portfolio protection
- For intraday focused day traders one must look at longer time frames or you lose all and everything. Medium and longer term projections, guidance is critical to not get burnt.
- Trade small and take profits often.
- Tight well defined stops below strong support levels.
- make no assumptions
- Don't over trade so you can be ready to take advantage of a correction and swings low when they happen. The FAANGs should have their own index and not be included in any other index since they disproportionately screw the appearance of any index of which they are a part. Don't believe anyone who says to sell FB or avoid FB when it shows weakness.

Question #5. Additional Comments/Questions/Suggestions?

Thank you for all the feedback, feel free to [contact us](#) at any time with any other questions or comments.

- Thank you for kind survey and hope more people can benefit from your good intent and great project, May you all be successful and content dear friends.
- One tweet makes a difference in today's price, but otherwise economy great. Fear is still low but rising some.
- When I was a child, the editorial portion of the news occupied a very small part of the news. Today, the editorial portion of the news takes up almost all of the news with very few actual facts being presented. The worst difference is that the editorial portion of the today's news is presented as though it is fact instead of editorial points of view. Mark Twain said, "If you don't read the newspaper, you're uninformed. If you do read the newspaper, you're misinformed." It's even worse today!

Standing Predictions

Below are some of the one-time prediction-type questions asked in previous weeks that have not been finalized yet or have been finalized recently. Suggest a future question [here](#).

Week 171, 01/21/18 Report - The S&P500 closed for 2017 at 2,673.61. Where do you think it will close for 2018?

- 57.8%: Higher 2-20%.
- 15.6%: Lower 2-20%.
- 13.3%: Higher 21% or more.
- 6.7%: Unchanged. Less than 2% change Higher or Lower.
- 6.7%: Lower 21% or more.