

[Monday, 1PM ET: Top Trading Experts Discuss This Report! Click Here To Learn More.](#)

Question #1. Which direction do you think the S&P500 index will move from this coming Monday's open to Friday's close (July 2nd to June 6th)?

(The order of possible responses to this question on the survey were randomized for each viewer.)

Higher: 62.5%

Lower: 37.5%

Higher/Lower Difference: 25.0%

Question #2. Rate your confidence in your answer to Question #2 by estimating the probability you have correctly predicted next week's market move.

Average of All Responses: 65.3%

Average For "Higher" Responses: 62.6%

Average For "Lower" Responses: 69.7%

Higher/Lower Difference: -7.1%

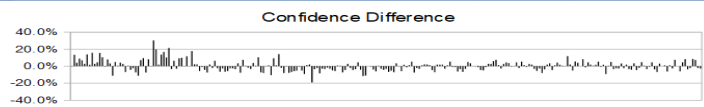
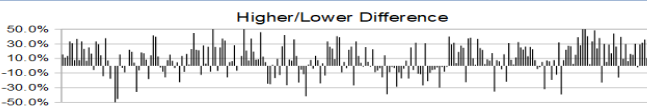
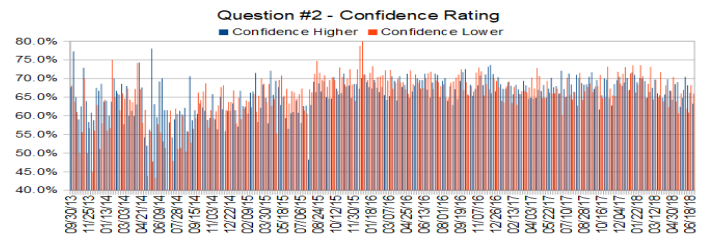
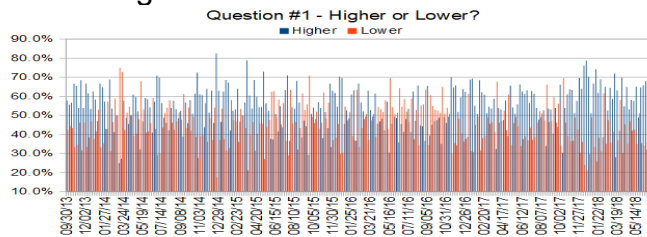
Responses Submitted This Week: 44

26-Week Average Number of Responses: 49.2

TimingResearch Crowd Forecast Prediction: 59% Chance Lower

This prediction is an attempt by the editor of this newsletter to use the full 4+ year history of data collected from this project to forecast a probability estimate for whether this week's sentiment is going to be correct and ultimately what the markets will do this coming week.

Details: Last week's majority sentiment from the survey was 44.7% Higher, and the Crowd Forecast Indicator prediction was 59% Chance Higher; the S&P500 closed 0.90% Lower for the week. This week's majority sentiment from the survey is 62.5% Higher with a greater average confidence from those who responded Higher. Similar conditions have been observed 17 times in the previous 248 weeks, with the majority sentiment being correct 41% of the time, with an average S&P500 move of 0.65% Lower for the week. Based on that history, the TimingResearch Crowd Forecast Indicator is forecasting a 59% Chance that the S&P500 is going to move Lower this coming week.



Raw Data Page (raw data files include full history spreadsheet and the above charts): TimingResearch.com/data.

TimingResearch Crowd Forecast News Report #249 (07/01/2018) - Page 2/8

[Monday, 1PM ET: Top Trading Experts Discuss This Report! Click Here To Learn More.](#)

Full Weekly Results (full version of this chart available in the [raw data](#) spreadsheet for this week, "Date" field below lists the Monday of the week being predicted).

Overall Sentiment All-Time "Correct" Percentage: 50.4%

Overall Sentiment 52-Week "Correct" Percentage: 54.9%

Overall Sentiment 12-Week "Correct" Percentage: 54.5%

Only the previous 52 weeks of data are shown below, please [download the raw data](#) to see the full range of past data.

198	07/10/17	62.9%	37.1%	25.7%	67.0%	65.1%	70.2%	-5.1%	Higher	55%	Lower	Higher	Yes	1	1	49.5%	2,424.51	2,459.27	34.76	1.43%
199	07/17/17	61.3%	38.7%	22.6%	69.1%	71.3%	65.6%	5.7%	Higher	64%	Higher	Higher	Yes	1	1	49.7%	2,459.50	2,472.54	13.04	0.53%
200	07/24/17	53.8%	46.2%	7.7%	66.5%	68.4%	64.4%	4.0%	Higher	61%	Higher	Higher	Yes	1	1	50.0%	2,472.04	2,472.10	0.06	0.00%
201	07/31/17	47.8%	52.2%	-4.5%	66.3%	66.4%	66.3%	0.1%	Lower	57%	Lower	Higher	No	0	1	49.7%	2,475.94	2,476.83	0.89	0.04%
202	08/07/17	49.0%	51.0%	-2.0%	66.8%	71.0%	62.7%	8.3%	Lower	53%	Higher	Lower	Yes	1	0	50.0%	2,477.14	2,441.32	-35.82	-1.45%
203	08/14/17	52.6%	47.4%	5.3%	70.8%	70.2%	71.5%	-1.3%	Higher	52%	Lower	Lower	No	0	0	49.7%	2,454.96	2,425.55	-29.41	-1.20%
204	08/21/17	33.9%	66.1%	-32.2%	65.8%	68.8%	64.2%	4.5%	Lower	70%	Higher	Higher	No	0	1	49.5%	2,425.50	2,443.05	17.55	0.72%
205	08/28/17	53.6%	46.4%	7.1%	67.5%	68.3%	66.5%	1.8%	Higher	73%	Higher	Higher	Yes	1	1	49.8%	2,447.35	2,476.55	29.20	1.19%
206	09/04/17	53.0%	47.0%	6.1%	68.1%	68.4%	67.7%	0.7%	Higher	75%	Higher	Lower	No	0	0	49.5%	2,470.35	2,461.43	-8.92	-0.36%
207	09/11/17	40.4%	59.6%	-19.3%	69.4%	70.4%	68.7%	1.8%	Lower	73%	Higher	Higher	No	0	1	49.3%	2,474.52	2,500.23	25.71	1.04%
208	09/18/17	53.8%	46.2%	7.7%	69.2%	71.7%	66.4%	5.3%	Higher	68%	Higher	Lower	No	0	0	49.0%	2,502.51	2,502.22	-0.29	-0.01%
209	09/25/17	43.9%	56.1%	-12.3%	67.5%	67.2%	67.8%	-0.6%	Lower	63%	Higher	Higher	No	0	1	48.8%	2,499.39	2,519.36	19.97	0.80%
210	10/02/17	66.0%	34.0%	32.0%	69.0%	69.6%	67.9%	1.6%	Higher	61%	Higher	Higher	Yes	1	1	49.0%	2,521.20	2,549.33	28.13	1.12%
211	10/09/17	30.4%	69.6%	-39.1%	68.4%	61.7%	70.9%	-9.3%	Lower	55%	Higher	Higher	No	0	1	48.8%	2,551.39	2,553.17	1.78	0.07%
212	10/16/17	53.8%	46.2%	7.7%	65.1%	65.5%	64.7%	0.8%	Higher	59%	Higher	Higher	Yes	1	1	49.0%	2,555.57	2,575.21	19.64	0.77%
213	10/23/17	61.0%	39.0%	22.0%	68.1%	70.0%	65.0%	5.0%	Higher	62%	Higher	Higher	Yes	1	1	49.3%	2,578.08	2,581.07	2.99	0.12%
214	10/30/17	63.6%	36.4%	27.3%	70.9%	69.7%	73.2%	-3.4%	Higher	52%	Lower	Higher	Yes	1	1	49.5%	2,577.75	2,587.84	10.09	0.39%
215	11/06/17	63.3%	36.7%	26.7%	65.7%	64.7%	67.3%	-2.5%	Higher	52%	Lower	Lower	No	0	0	49.3%	2,587.47	2,582.30	-5.17	-0.20%
216	11/13/17	51.2%	48.8%	2.3%	64.1%	62.7%	65.5%	-2.8%	Higher	55%	Lower	Higher	Yes	1	1	49.5%	2,576.53	2,578.85	2.32	0.09%
217	11/20/17	57.5%	42.5%	15.0%	67.1%	68.5%	65.3%	3.2%	Higher	60%	Higher	Higher	Yes	1	1	49.8%	2,579.49	2,602.42	22.93	0.89%
218	11/27/17	69.6%	30.4%	39.1%	70.2%	69.5%	71.8%	-2.3%	Higher	63%	Higher	Higher	Yes	1	1	50.0%	2,602.66	2,642.22	39.56	1.52%
219	12/04/17	64.0%	36.0%	28.0%	69.8%	70.5%	68.6%	1.9%	Higher	58%	Higher	Lower	No	0	0	49.8%	2,657.19	2,651.50	-5.69	-0.21%
220	12/11/17	76.0%	24.0%	52.0%	68.8%	68.0%	71.3%	-3.2%	Higher	67%	Higher	Higher	Yes	1	1	50.0%	2,652.19	2,675.81	23.62	0.89%
221	12/18/17	78.7%	21.3%	57.4%	69.8%	68.9%	73.0%	-4.1%	Higher	70%	Higher	Lower	No	0	0	49.8%	2,685.92	2,683.34	-2.58	-0.10%
222	12/25/17	70.2%	29.8%	40.4%	69.2%	70.2%	66.8%	3.4%	Higher	55%	Lower	Lower	No	0	0	49.5%	2,679.09	2,673.61	-5.48	-0.20%
223	01/01/18	51.1%	48.9%	2.2%	69.1%	67.0%	71.4%	-4.4%	Higher	52%	Lower	Higher	Yes	1	1	49.8%	2,683.73	2,743.15	59.42	2.21%
224	01/08/18	66.7%	33.3%	33.3%	72.3%	71.6%	73.5%	-1.9%	Higher	64%	Higher	Higher	Yes	1	1	50.0%	2,742.67	2,786.24	43.57	1.59%
225	01/15/18	74.2%	25.8%	48.4%	69.8%	71.0%	66.3%	4.7%	Higher	73%	Higher	Higher	Yes	1	1	50.2%	2,798.96	2,810.30	11.34	0.41%
226	01/22/18	61.8%	38.2%	23.6%	68.7%	69.0%	68.3%	0.6%	Higher	56%	Higher	Higher	Yes	1	1	50.5%	2,809.16	2,872.87	63.71	2.27%
227	01/29/18	68.9%	31.1%	37.8%	71.2%	70.2%	73.6%	-3.4%	Higher	53%	Lower	Lower	No	0	0	50.2%	2,867.23	2,762.13	-105.10	-3.67%
228	02/05/18	38.5%	61.5%	-23.1%	70.4%	70.0%	70.6%	-0.6%	Lower	58%	Higher	Lower	Yes	1	0	50.4%	2,741.06	2,619.55	-121.51	-4.43%
229	02/12/18	64.9%	35.1%	29.8%	67.7%	69.3%	64.8%	4.6%	Higher	63%	Higher	Higher	Yes	1	1	50.7%	2,636.75	2,732.22	95.47	3.62%
230	02/19/18	52.5%	47.5%	5.1%	66.6%	64.8%	68.6%	-3.7%	Higher	56%	Lower	Higher	Yes	1	1	50.9%	2,722.99	2,747.30	24.31	0.89%
231	02/26/18	64.4%	35.6%	28.9%	68.8%	66.4%	73.1%	-6.8%	Higher	59%	Lower	Lower	No	0	0	50.7%	2,757.37	2,691.25	-66.12	-2.40%
232	03/05/18	58.5%	41.5%	17.1%	66.2%	67.5%	64.4%	3.1%	Higher	64%	Higher	Higher	Yes	1	1	50.9%	2,681.06	2,786.57	105.51	3.94%
233	03/12/18	72.0%	28.0%	44.0%	69.7%	69.7%	69.6%	0.1%	Higher	54%	Lower	Lower	No	0	0	50.7%	2,790.54	2,752.01	-38.53	-1.38%
234	03/19/18	63.2%	36.8%	26.3%	65.5%	66.0%	65.0%	1.0%	Higher	57%	Higher	Lower	No	0	0	50.4%	2,741.38	2,588.26	-153.12	-5.59%
235	03/26/18	42.0%	58.0%	-16.0%	69.1%	65.5%	71.7%	-6.2%	Lower	80%	Higher	Higher	No	0	1	50.2%	2,619.35	2,640.87	21.52	0.82%
236	04/02/18	69.8%	30.2%	39.5%	64.5%	64.8%	63.9%	1.0%	Higher	64%	Lower	Lower	No	0	0	50.0%	2,633.45	2,604.47	-28.98	-1.10%
237	04/09/18	54.7%	45.3%	9.4%	66.8%	65.7%	68.1%	-2.4%	Higher	53%	Higher	Higher	Yes	1	1	50.2%	2,617.18	2,656.30	39.12	1.49%
238	04/16/18	64.9%	35.1%	29.7%	67.2%	69.8%	62.3%	7.5%	Higher	69%	Higher	Higher	Yes	1	1	50.4%	2,670.10	2,670.14	0.04	0.00%
239	04/23/18	53.1%	46.9%	6.3%	66.7%	66.8%	66.7%	0.1%	Higher	61%	Higher	Lower	No	0	0	50.2%	2,675.40	2,669.91	-5.49	-0.21%
240	04/30/18	58.1%	41.9%	16.1%	66.9%	64.3%	70.4%	-6.1%	Higher	60%	Higher	Lower	No	0	0	50.0%	2,675.47	2,663.42	-12.05	-0.45%
241	05/07/18	57.5%	42.5%	15.0%	66.5%	68.5%	63.8%	4.7%	Higher	67%	Higher	Higher	Yes	1	1	50.2%	2,680.34	2,727.72	47.38	1.77%
242	05/14/18	65.1%	34.9%	30.2%	66.1%	69.0%	60.7%	8.3%	Higher	69%	Higher	Lower	No	0	0	50.0%	2,738.47	2,712.97	-25.50	-0.93%
243	05/21/18	48.9%	51.1%	-2.1%	64.3%	62.4%	66.0%	-3.7%	Lower	87%	Higher	Lower	Yes	1	0	50.2%	2,735.39	2,721.33	-14.06	-0.51%
244	05/28/18	64.6%	35.4%	29.2%	65.9%	64.8%	66.9%	-2.1%	Higher	54%	Higher	Higher	Yes	1	1	50.4%	2,705.11	2,734.62	29.51	1.09%
245	06/04/18	65.8%	34.2%	31.6%	67.5%	70.4%	61.9%	8.5%	Higher	58%	Higher	Higher	Yes	1	1	50.6%	2,741.67	2,779.03	37.36	1.36%
246	06/11/18	67.9%	32.1%	35.8%	65.9%	68.2%	60.9%	7.3%	Higher	62%	Higher	Lower	No	0	0	50.4%	2,780.18	2,779.42	-0.76	-0.03%
247	06/18/18	55.3%	44.7%	10.5%	67.1%	66.2%	68.2%	-2.1%	Higher	53%	Lower	Lower	No	0	0	50.2%	2,765.79	2,754.88	-10.91	-0.39%
248	06/25/18	44.7%	55.3%	-10.5%	64.7%	63.2%	66.0%	-2.7%	Lower	59%	Higher	Lower	Yes	1	0	50.4%	2,742.94	2,718.37	-24.57	-0.90%
249	07/02/18	62.5%	37.5%	25.0%	65.3%	62.6%	69.7%	-7.1%	Higher	59%	Lower	???	???	???	???	???	???	???	???	???

Weekly Reports Page: TimingResearch.com/reports

Raw Data Page: TimingResearch.com/rawdata

Current Survey Page: TimingResearch.com/currentsurvey

Any feedback: TimingResearch.com/contact

NOTE: The following open-ended answers are solely the opinions of the anonymous respondents to this survey. Responses are mostly unedited, but some have been reformatted slightly for to make them easier to read. Some irrelevant responses (e.g. "none"), or anything obviously fake, or copy and pasted responses have been omitted. All-caps responses have been changed to all lowercase. All responses for each week, unedited, are available in the raw data spreadsheets at TimingResearch.com/data.

Question #3. For your answer to Question #1, please share what specific reason(s) you think the S&P500 will be heading the direction you chose.

“Higher” Respondent Answers:

- Holiday
- Commodities looked higher somewhat in corn maybe a little in terms of the future I guess
- Cosr
- start of the quarter, new money from mutual funds
- Funds buying to invest the new money coming in at the start of a new quarter
- Low Holiday Volume. Tame or absence of news on trade war.
- Good earnings ahead
- New tax laws are suppose to work for industries and for individuals. So more money going through market.
- Market's will slide sideways as it's a holiday week.
- Most investors are more sophisticated that they monitor specific trends of their own portfolio and known the likelihood of ups or downs barring incidental world problems..IT will be really up to keep the republican seats.Any deviant means those in power will all go out to flip hamburger at restaurants
- trump renegotiates the tariffs
- If Dow rises above 50dma we could see a new rally (?)
- Banks still own so many stocks.

“Lower” Respondent Answers:

- I believe there is a slight probability that markets remain at current levels or slightly lower until earnings kick into gear with some of the big banks reporting on Friday the 13th. I'm looking for the S&P to retest support again around 2700, before heading higher.
- Oil price rise
- When the market can go down 50 points in a day & go up 25 for a couple of days only to give it all back by the close, the sellers have the upper hand & down is the path of least resistance. The algos are playing with investors & the light trading that will take place during the 4th of July week will show daily volatility with little permanent upside. NFP may provide an added boost on Friday but this market action is definitely a "piss-you-off-market." Possible serious upside is 2 weeks away.
- technical deterioration

[Monday, 1PM ET: Top Trading Experts Discuss This Report! Click Here To Learn More.](#)

- Politics.
- Holiday week
- The downside correction is occurring in the rotation out of the go-go stocks, the industrials and the FANG stocks.
- weak buying
- Two factors: (1) The financials are weak. After bank stocks gapped up on Fri morning following the stress test news, they declined badly into the close. (2) Funds have every reason to dump their tech winners after the end of the quarter.
- sell in may a big crash is coming
- Sell in June and go away?? LOL

Question #4a. What has been your BEST experience so far as a trader?

- When one of my companies was taken out by a merger.
- Profit
- Feel like I am in control, even though making money has been a challenge !!
- I have always beat all the indexes but this JUNE has been my waterloo. tariff retaliation
- Being disciplined enough to reverse an erroneous trade and re-submit with the original direction.
- I regard as something do like work. Not good experience.
- Survive 40 years
- learning from a master trader
- Arbitraging individual stocks on bad news.
- Recently, my short of RHT into their earnings went well, as they declined 13%.
- Took profits in Preferred shares
- Making consistent profits.
- Make my profits by buying stock on upward momentum/trend.
- selling options
- Selling out-of-the-money puts on a down day.
- intraday trading - Equity cash management
- Trading NVDA.
- Learning from the Online Trading Academy about supply zones and demand zones where the real selling and buying take place . Also, selling puts at demand zones where I haven't had a loss in 5 years. I do miss the big winners because I don't buy at demand zones but that takes more courage my "bird-in-the-hand" put selling.

Question #4b. What has been your WORST experience so far as a trader?

- When Bethlehem Steel went bankrupt.
- Trades not working in my favor.
- Trade wars
- Having the broker reverse a trade based on a rule at the exchange where I would have been in profit had it been maintained.
- Blow up accounts. Lose money. Getting kicked off webinars because don't keep paying money out my visa account. Some sites that have six people create accounts on mail servers and abuse me then close accounts so don't see normal email.
- Getting subpar returns
- CHF crash really scared me
- Being unaware of a major news item or earnings report.
- My stocks suffered badly after the Sept 2001 terrorist attack on the World Trade Center & Pentagon.
- Fat. Gstar
- Big gap downs overnight.
- Losing a lot of money on speculative biotech stocks. Never again!
- futures
- Using fundamentals as a reason to sell.
- Trading BA.
- Investing with Chuck Hughes and following his trades. Also, being talked out of making investments by "market professionals" that went up dramatically afterwards and being talked into making investments by "market investments" that were big losers.

Question #5. Additional Comments/Questions/Suggestions?

Thank you for all the feedback, feel free to [contact us](#) at any time with any other questions or comments.

- Hoping to get better success rate.
- I have learned not to pay attention to experts, and stay on the following sectors (TECH, HEALTH, CONSUMER (STAPLES/DISCRETIONARY)) don't move out of those areas
- Gold bottoms. Seems to be too negative given the global risks. still target 1375.
- Please share your opinion about where S&P (SPY) and Nasdaq are headed. What do we expect in the short term till earning season starts.
- Way back to the Mayflower Compact, early settlers agreed to go by the will of the majority and our Constitution provides for that same principle. The LEFT is in violation of the Constitution by disavowing that principle. Obviously, the left must be ignorant or stupid or evil since they also object to peaceful assembly, quiet enjoyment and freedom of speech except for themselves. The left has embraced Fascism and anarchy as demonstrated by their behavior.

Standing Predictions

Below are some of the one-time prediction-type questions asked in previous weeks that have not been finalized yet or have been finalized recently. Suggest a future question [here](#).

Week 171, 01/21/18 Report - The S&P500 closed for 2017 at 2,673.61. Where do you think it will close for 2018?

- 57.8%: Higher 2-20%.
- 15.6%: Lower 2-20%.
- 13.3%: Higher 21% or more.
- 6.7%: Unchanged. Less than 2% change Higher or Lower.
- 6.7%: Lower 21% or more.