

[Monday, 1PM ET: Top Trading Experts Discuss This Report! Click Here To Learn More.](#)

**Question #1. Which direction do you think the S&P500 index will move from this coming Tuesday's open to Friday's close (September 4th to September 7th)?**

*(The order of possible responses to this question on the survey were randomized for each viewer.)*

Higher: 41.7%

Lower: 58.3%

Higher/Lower Difference: -16.7%

**Question #2. Rate your confidence in your answer to Question #2 by estimating the probability you have correctly predicted next week's market move.**

Average of All Responses: 64.0%

Average For "Higher" Responses: 61.3%

Average For "Lower" Responses: 66.0%

Higher/Lower Difference: -4.6%

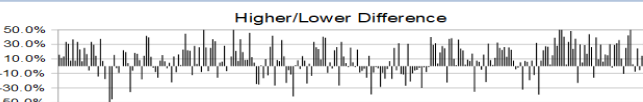
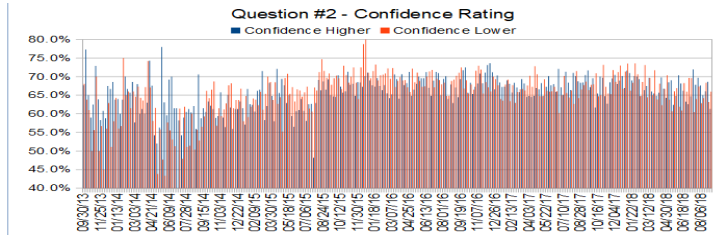
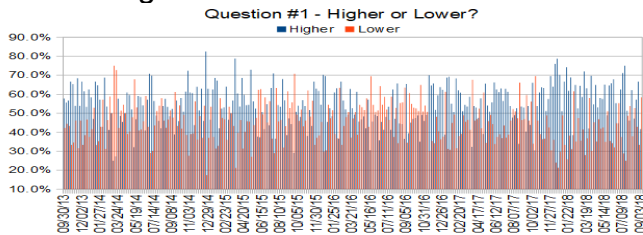
**Responses Submitted This Week: 38**

**52-Week Average Number of Responses: 48.1**

**TimingResearch Crowd Forecast Prediction: 58% Chance Higher**

*This prediction is an attempt by the editor of this newsletter to use the full 4+ year history of data collected from this project to forecast a probability estimate for whether this week's sentiment is going to be correct and ultimately what the markets will do this coming week.*

Details: Last week's majority sentiment from the survey was 66.7% Higher, and the Crowd Forecast Indicator prediction was 65% Chance Higher; the S&P500 closed 0.58% Higher for the week. This week's majority sentiment from the survey is 58.3% Lower with a greater average confidence from those who responded Lower. Similar conditions have been observed 45 times in the previous 257 weeks, with the majority sentiment being correct only 42% of the time, with an average S&P500 move of 0.15% Higher for the week. Based on that history, the TimingResearch Crowd Forecast Indicator is forecasting a 58% Chance that the S&P500 is going to move Higher this coming week.



Raw Data Page (raw data files include full history spreadsheet and the above charts): [TimingResearch.com/data](http://TimingResearch.com/data).

# TimingResearch Crowd Forecast News Report #258 (09/03/2018) - Page 2/7

[Monday, 1PM ET: Top Trading Experts Discuss This Report! Click Here To Learn More.](#)

Full Weekly Results (full version of this chart available in the [raw data](#) spreadsheet for this week, "Date" field below lists the Monday of the week being predicted).

Overall Sentiment All-Time "Correct" Percentage: 51.0%

Overall Sentiment 52-Week "Correct" Percentage: 56.9%

Overall Sentiment 12-Week "Correct" Percentage: 63.6%

Only the previous 52 weeks of data are shown below, please [download the raw data](#) to see the full range of past data.

207	09/11/17	40.4%	59.6%	-19.3%	69.4%	70.4%	68.7%	1.8%	Lower	73%	Higher	Higher	No	0	1	49.3%	2,474.52	2,500.23	25.71	1.04%
208	09/18/17	53.8%	46.2%	7.7%	69.2%	71.7%	66.4%	5.3%	Higher	68%	Higher	Lower	No	0	0	49.0%	2,502.51	2,502.22	-0.29	-0.01%
209	09/25/17	43.9%	56.1%	-12.3%	67.5%	67.2%	67.8%	-0.6%	Lower	63%	Higher	Higher	No	0	1	48.8%	2,499.39	2,519.36	19.97	0.80%
210	10/02/17	66.0%	34.0%	32.0%	69.0%	69.6%	67.9%	1.6%	Higher	61%	Higher	Higher	Yes	1	1	49.0%	2,521.20	2,549.33	28.13	1.12%
211	10/09/17	30.4%	69.6%	-39.1%	68.4%	61.7%	70.9%	-9.3%	Lower	55%	Higher	Higher	No	0	1	48.8%	2,551.39	2,553.17	1.78	0.07%
212	10/16/17	53.8%	46.2%	7.7%	65.1%	65.5%	64.7%	0.8%	Higher	59%	Higher	Higher	Yes	1	1	49.0%	2,555.57	2,575.21	19.64	0.77%
213	10/23/17	61.0%	39.0%	22.0%	68.1%	70.0%	65.0%	5.0%	Higher	62%	Higher	Higher	Yes	1	1	49.3%	2,578.08	2,581.07	2.99	0.12%
214	10/30/17	63.6%	36.4%	27.3%	70.9%	69.7%	73.2%	-3.4%	Higher	52%	Lower	Higher	Yes	1	1	49.5%	2,577.75	2,587.84	10.09	0.39%
215	11/06/17	63.3%	36.7%	26.7%	65.7%	64.7%	67.3%	-2.5%	Higher	52%	Lower	Lower	No	0	0	49.3%	2,587.47	2,582.30	-5.17	-0.20%
216	11/13/17	51.2%	48.8%	2.3%	64.1%	62.7%	65.5%	-2.8%	Higher	55%	Lower	Higher	Yes	1	1	49.5%	2,576.53	2,578.85	2.32	0.09%
217	11/20/17	57.5%	42.5%	15.0%	67.1%	68.5%	65.3%	3.2%	Higher	60%	Higher	Higher	Yes	1	1	48.8%	2,579.49	2,602.42	22.93	0.89%
218	11/27/17	69.6%	30.4%	39.1%	70.2%	69.5%	71.8%	-2.3%	Higher	63%	Higher	Higher	Yes	1	1	50.0%	2,602.66	2,642.22	39.56	1.52%
219	12/04/17	64.0%	36.0%	28.0%	69.8%	70.5%	68.6%	1.9%	Higher	58%	Higher	Lower	No	0	0	49.8%	2,657.19	2,651.50	-5.69	-0.21%
220	12/11/17	76.0%	24.0%	52.0%	68.8%	68.0%	71.3%	-3.2%	Higher	67%	Higher	Higher	Yes	1	1	50.0%	2,652.19	2,675.81	23.62	0.89%
221	12/18/17	78.7%	21.3%	57.4%	69.8%	68.9%	73.0%	-4.1%	Higher	70%	Higher	Lower	No	0	0	49.8%	2,685.92	2,683.34	-2.58	-0.10%
222	12/25/17	70.2%	29.8%	40.4%	69.2%	70.2%	70.2%	3.4%	Higher	55%	Lower	Lower	No	0	0	49.5%	2,679.09	2,673.61	-5.48	-0.20%
223	01/01/18	51.1%	48.9%	2.2%	69.1%	67.0%	71.4%	-4.4%	Higher	52%	Lower	Higher	Yes	1	1	49.8%	2,683.73	2,743.15	59.42	2.21%
224	01/08/18	66.7%	33.3%	33.3%	72.3%	71.6%	73.5%	-1.9%	Higher	64%	Higher	Higher	Yes	1	1	50.0%	2,742.67	2,786.24	43.57	1.59%
225	01/15/18	74.2%	25.8%	48.4%	69.8%	71.0%	66.3%	4.7%	Higher	73%	Higher	Higher	Yes	1	1	50.2%	2,798.96	2,810.30	11.34	0.41%
226	01/22/18	61.8%	38.2%	23.6%	68.7%	69.0%	68.3%	0.6%	Higher	56%	Higher	Higher	Yes	1	1	50.5%	2,809.16	2,872.87	63.71	2.27%
227	01/29/18	68.9%	31.1%	37.8%	71.2%	70.2%	73.6%	-3.4%	Higher	53%	Lower	Lower	No	0	0	50.2%	2,867.23	2,762.13	-105.10	-3.67%
228	02/05/18	38.5%	61.5%	-23.1%	70.4%	70.0%	70.6%	-0.6%	Lower	58%	Higher	Lower	Yes	1	0	50.4%	2,741.06	2,619.55	-121.51	-4.43%
229	02/12/18	64.9%	35.1%	29.8%	67.7%	69.3%	64.8%	4.6%	Higher	63%	Higher	Higher	Yes	1	1	50.7%	2,636.75	2,732.22	95.47	3.62%
230	02/19/18	52.5%	47.5%	5.1%	66.6%	64.8%	68.6%	-3.7%	Higher	56%	Lower	Higher	Yes	1	1	50.9%	2,722.99	2,747.30	24.31	0.89%
231	02/26/18	64.4%	35.6%	28.9%	68.8%	66.4%	73.1%	-6.8%	Higher	59%	Lower	Lower	No	0	0	50.7%	2,757.37	2,691.25	-66.12	-2.40%
232	03/05/18	58.5%	41.5%	17.1%	66.2%	67.5%	64.4%	3.1%	Higher	64%	Higher	Higher	Yes	1	1	50.9%	2,681.06	2,786.57	105.51	3.94%
233	03/12/18	72.0%	28.0%	44.0%	69.7%	69.7%	69.6%	0.1%	Higher	54%	Lower	Lower	No	0	0	50.7%	2,790.54	2,752.01	-38.53	-1.38%
234	03/19/18	63.2%	36.8%	26.3%	65.5%	66.0%	65.0%	1.0%	Higher	57%	Higher	Lower	No	0	0	50.4%	2,741.38	2,588.26	-153.12	-5.59%
235	03/26/18	42.0%	58.0%	-16.0%	69.1%	65.5%	71.7%	-6.2%	Lower	80%	Higher	Higher	No	0	1	50.2%	2,619.35	2,640.87	21.52	0.82%
236	04/02/18	69.8%	30.2%	39.5%	64.5%	64.8%	63.9%	1.0%	Higher	64%	Lower	Lower	No	0	0	50.0%	2,633.45	2,604.47	-28.98	-1.10%
237	04/09/18	54.7%	45.3%	9.4%	66.8%	65.7%	68.1%	-2.4%	Higher	53%	Higher	Higher	Yes	1	1	50.2%	2,617.18	2,656.30	39.12	1.49%
238	04/16/18	64.9%	35.1%	29.7%	67.2%	69.8%	62.3%	7.5%	Higher	69%	Higher	Higher	Yes	1	1	50.4%	2,670.10	2,670.14	0.04	0.00%
239	04/23/18	53.1%	46.9%	6.3%	66.7%	66.8%	66.7%	0.0%	Higher	61%	Higher	Lower	No	0	0	50.2%	2,675.40	2,669.91	-5.49	-0.21%
240	04/30/18	58.1%	41.9%	16.1%	66.9%	64.3%	70.4%	-6.1%	Higher	60%	Higher	Lower	No	0	0	50.0%	2,675.47	2,663.42	-12.05	-0.45%
241	05/07/18	57.5%	42.5%	15.0%	66.5%	68.5%	63.8%	4.7%	Higher	67%	Higher	Higher	Yes	1	1	50.2%	2,680.34	2,727.72	47.38	1.77%
242	05/14/18	65.1%	34.9%	30.2%	66.1%	69.0%	60.7%	8.3%	Higher	69%	Higher	Lower	No	0	0	50.0%	2,738.47	2,712.97	-25.50	-0.93%
243	05/21/18	48.9%	51.1%	-2.1%	64.3%	62.4%	66.0%	-3.7%	Lower	87%	Higher	Lower	Yes	1	0	50.2%	2,735.39	2,721.33	-14.06	-0.51%
244	05/28/18	64.6%	35.4%	29.2%	65.9%	64.8%	66.9%	-2.1%	Higher	54%	Higher	Higher	Yes	1	1	50.4%	2,705.11	2,734.62	29.51	1.09%
245	06/04/18	65.8%	34.2%	31.6%	67.5%	70.4%	61.9%	8.5%	Higher	58%	Higher	Higher	Yes	1	1	50.6%	2,741.67	2,779.03	37.36	1.36%
246	06/11/18	67.9%	32.1%	35.8%	65.9%	68.2%	60.9%	7.3%	Higher	62%	Higher	Higher	Lower	No	0	50.4%	2,780.18	2,779.42	-0.76	-0.03%
247	06/18/18	55.3%	44.7%	10.5%	67.1%	66.2%	68.2%	-2.1%	Higher	53%	Lower	Lower	No	0	0	50.2%	2,765.79	2,754.88	-10.91	-0.39%
248	06/25/18	44.7%	55.3%	-10.5%	64.7%	63.2%	66.0%	-2.7%	Lower	59%	Higher	Lower	Yes	1	0	50.4%	2,742.94	2,718.37	-24.57	-0.90%
249	07/02/18	62.5%	37.5%	25.0%	65.3%	62.6%	69.7%	-7.1%	Higher	59%	Lower	Higher	Yes	1	1	50.6%	2,704.95	2,759.82	54.87	2.03%
250	07/09/18	71.1%	28.9%	42.2%	66.1%	64.7%	69.6%	-4.9%	Higher	56%	Lower	Higher	Yes	1	1	50.8%	2,775.62	2,801.31	25.69	0.93%
251	07/16/18	75.0%	25.0%	50.0%	69.1%	72.0%	60.5%	11.5%	Higher	63%	Higher	Higher	Yes	1	1	51.0%	2,797.36	2,801.83	4.47	0.16%
252	07/23/18	51.3%	48.7%	2.6%	65.9%	67.8%	64.0%	3.8%	Higher	64%	Lower	Higher	Yes	1	1	51.2%	2,799.17	2,818.82	19.65	0.70%
253	07/30/18	46.2%	53.8%	-7.7%	68.5%	69.7%	67.4%	2.3%	Lower	64%	Higher	Higher	No	0	1	51.0%	2,819.00	2,840.35	21.35	0.76%
254	08/06/18	62.2%	37.8%	24.3%	65.8%	67.6%	62.9%	4.8%	Higher	73%	Higher	Lower	No	0	0	50.8%	2,840.29	2,833.28	-7.01	-0.25%
255	08/13/18	47.2%	52.8%	-5.6%	64.0%	65.0%	64.2%	0.8%	Lower	65%	Higher	Higher	No	0	1	50.6%	2,835.46	2,850.13	14.67	0.52%
256	08/20/18	57.1%	42.9%	14.3%	67.0%	66.0%	68.3%	-2.3%	Higher	67%	Lower	Higher	Yes	1	1	50.8%	2,853.93	2,874.69	20.76	0.73%
257	08/27/18	66.7%	33.3%	33.3%	66.8%	68.6%	63.2%	5.5%	Higher	65%	Higher	Higher	Yes	1	1	51.0%	2,853.93	2,874.69	20.76	0.73%
258	09/03/18	41.7%	58.3%	-16.7%	64.0%	61.3%	66.0%	-4.6%	Lower	58%	Higher	???	???	???	???	???	???	???	???	???

Weekly Reports Page: [TimingResearch.com/reports](http://TimingResearch.com/reports)

Raw Data Page: [TimingResearch.com/rawdata](http://TimingResearch.com/rawdata)

Current Survey Page: [TimingResearch.com/currentsurvey](http://TimingResearch.com/currentsurvey)

Any feedback: [TimingResearch.com/contact](http://TimingResearch.com/contact)

*NOTE: The following open-ended answers are solely the opinions of the anonymous respondents to this survey. Responses are mostly unedited, but some have been reformatted slightly for to make them easier to read. Some irrelevant responses (e.g. "none"), or anything obviously fake, or copy and pasted responses have been omitted. All-caps responses have been changed to all lowercase. All responses for each week, unedited, are available in the raw data spreadsheets at [TimingResearch.com/data](http://TimingResearch.com/data).*

**Question #3. For your answer to Question #1, please share what specific reason(s) you think the S&P500 will be heading the direction you chose.**

### **“Higher” Respondent Answers:**

- It will dip from tues thru thursday and rally by end of day Friday
- guess
- The market doesn't seem to want to go lower
- New high in Aug, currently just above resistance
- Momentum and seasonality
- vacation is over
- In recent weeks, dips have been bought. Momentum is positive.
- 50% chance

### **“Lower” Respondent Answers:**

- Labor day signals a sell
- High market could be a resistance line mire sells no than buying maybe I guess
- S&P peaking stchastics >80%
- Market is very overbought..
- tariffs
- Higher on the week but lower than Tuesday's open because the pent up demand after a 3-day weekend should mean that Tues will open up strong especially now that Mexico is on board & Canada is soon to follow. The NFP will be OK but it's hard to believe that it will be extraordinary. Scary Sept & Oct will retard buying but institutions will be buying back on Tuesday the issues that they sold last week. Still a bullish week but not compared to Tuesday's open. FAANGs will continue to carry the load.
- Continued uncertainty associated with trade issues with Canada, China, Europe, Etc.
- Don't fight the Fed
- Overbought
- Testing Support
- I think the market is peaking at new resistance and is due for a rest and some consolidation.
- It is virtually impossible to predict week to week where the S&P ends up each week. What I'm really saying with my routine "lower" and "50%" response isn't so much what will happen tby this time next wee.. What I am saying is this market is going to turn down and that is the next important event that will inevitably occur and reset the levels at more realistic

levels. I will not really bother with being right week to week as a result. I know I'll get it right in the end.

- The market is overbought and due for a downside correction. September is usually a weak month for stock prices.
- I have certain technical; indicators that I follow and they say we are heading south - but I'm first to say this is a likelihood of happening - that's all.
- Instability
- Current high and negativity of the Trade negotiations.
- I don't know where the heck the market is going and therefore rated my confidence at only 50%. Everybody knows it's "overpriced" whatever that means. Yet most seem to believe it will go up to at least 3000. And everybody has trailing stops or buys protective puts or whatever. So it seems everybody is protected even if there's a 20% correction. But it seems nothing can stop this uptrend - unless it's something really drastic and unexpected - maybe. I dunno.

**Question #4. What trading-related questions or topics would you like the experts to discuss on future episodes of the weekly Crowd Forecast News show? (The show is off this coming week, but back on September 10th.)**

- Entry/exit strategies
- All guests should indicate how long they have been professional advisers and what their annual results have been for the period that they have been advising. They also should indicate what makes them superior.
- Isolation of some markets
- options pricing, instead of buying stock, using options to take bull/bear position.
- Competing with algorithmic firms when trading.
- Profit
- Position Size / Money Management
- seasonality and momentum
- fundamental analysis

### Question #5. Additional Comments/Questions/Suggestions?

Thank you for all the feedback, feel free to [contact us](#) at any time with any other questions or comments.

- A lot of people like to say that the definition of insanity is doing the same thing over again and expecting different results and if that's true, we have a lot of people in this country promoting socialism who must therefore be insane.
- Will the economy be better because of a new policy on behalf of TYrump?
- Have all panelists on camera.

## Standing Predictions

Below are some of the one-time prediction-type questions asked in previous weeks that have not been finalized yet or have been finalized recently. Suggest a future question [here](#).

**Week 171, 01/21/18 Report** - The S&P500 closed for 2017 at 2,673.61. Where do you think it will close for 2018?

- 57.8%: Higher 2-20%.
- 15.6%: Lower 2-20%.
- 13.3%: Higher 21% or more.
- 6.7%: Unchanged. Less than 2% change Higher or Lower.
- 6.7%: Lower 21% or more.