

[Monday, 1PM ET: Top Trading Experts Discuss This Report! Click Here To Learn More.](#)

Question #1. Which direction do you think the S&P500 index will move from this coming Monday's open to Friday's close (October 1st to October 5th)?

(The order of possible responses to this question on the survey were randomized for each viewer.)

Higher: 62.1%

Lower: 37.9%

Higher/Lower Difference: 24.1%

Question #2. Rate your confidence in your answer to Question #2 by estimating the probability you have correctly predicted next week's market move.

Average of All Responses: 63.3%

Average For "Higher" Responses: 59.7%

Average For "Lower" Responses: 69.1%

Higher/Lower Difference: -9.4%

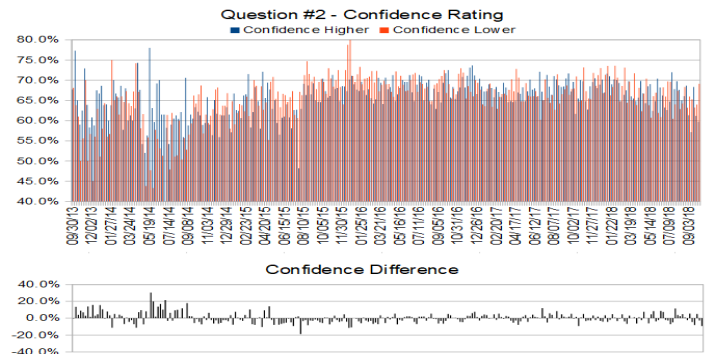
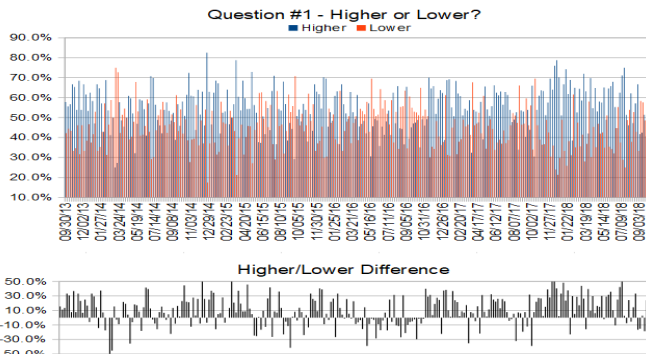
Responses Submitted This Week: 31

52-Week Average Number of Responses: 46.8

TimingResearch Crowd Forecast Prediction: 52% Chance Higher

This prediction is an attempt by the editor of this newsletter to use the full 5 year history of data collected from this project to forecast a probability estimate for whether this week's sentiment is going to be correct and ultimately what the markets will do this coming week.

Details: Last week's majority sentiment from the survey was 40.6% Higher, and the Crowd Forecast Indicator prediction was 57% Chance Higher; the S&P500 closed 0.27% Lower for the week. This week's majority sentiment from the survey is 62.1% Higher with a greater average confidence from those who responded Lower. Similar conditions have been observed 77 times in the previous 261 weeks, with the majority sentiment being correct 52% of the time, but with an average S&P500 move of 0.12% Lower for the week. Based on that history, the TimingResearch Crowd Forecast Indicator is forecasting a 52% Chance that the S&P500 is going to move Higher this coming week.



Raw Data Page (raw data files include full history spreadsheet and the above charts): TimingResearch.com/data.

TimingResearch Crowd Forecast News Report #262 (09/30/2018) - Page 2/6

[Monday, 1PM ET: Top Trading Experts Discuss This Report! Click Here To Learn More.](#)

Full Weekly Results (full version of this chart available in the [raw data](#) spreadsheet for this week, "Date" field below lists the Monday of the week being predicted).

Overall Sentiment All-Time "Correct" Percentage: 51.4%
 Overall Sentiment 52-Week "Correct" Percentage: 60.8%
 Overall Sentiment 12-Week "Correct" Percentage: 63.6%

Only the previous 52 weeks of data are shown below, please [download the raw data](#) to see the full range of past data.

211	10/09/17	30.4%	69.6%	-39.1%	68.4%	61.7%	70.9%	-9.3%	Lower	55%	Higher	Higher	No	0	1	48.8%	2,551.39	2,553.17	1.78	0.07%
212	10/16/17	53.8%	46.2%	7.7%	65.1%	65.5%	64.7%	0.8%	Higher	59%	Higher	Higher	Yes	1	1	49.0%	2,555.57	2,575.21	19.64	0.77%
213	10/23/17	61.0%	39.0%	22.0%	68.1%	70.0%	65.0%	5.0%	Higher	62%	Higher	Higher	Yes	1	1	49.3%	2,578.08	2,581.07	2.99	0.12%
214	10/30/17	63.6%	36.4%	27.3%	70.9%	69.7%	73.2%	-3.4%	Higher	52%	Lower	Higher	Yes	1	1	49.5%	2,577.75	2,587.84	10.09	0.39%
215	11/06/17	63.3%	36.7%	26.7%	65.7%	64.7%	67.3%	-2.5%	Higher	52%	Lower	Lower	No	0	0	49.3%	2,587.47	2,582.30	-5.17	-0.20%
216	11/13/17	51.2%	48.8%	2.3%	64.1%	62.7%	65.5%	-2.8%	Higher	55%	Lower	Higher	Yes	1	1	49.5%	2,576.53	2,578.85	2.32	0.09%
217	11/20/17	57.5%	42.5%	15.0%	67.1%	68.5%	65.3%	3.2%	Higher	60%	Higher	Higher	Yes	1	1	49.8%	2,579.49	2,602.42	22.93	0.89%
218	11/27/17	69.6%	30.4%	39.1%	70.2%	69.5%	71.8%	-2.3%	Higher	63%	Higher	Higher	Yes	1	1	50.0%	2,602.66	2,642.22	39.56	1.52%
219	12/04/17	64.0%	36.0%	28.0%	69.8%	70.5%	68.6%	1.9%	Higher	58%	Higher	Lower	No	0	0	49.8%	2,657.19	2,651.50	-5.69	-0.21%
220	12/11/17	76.0%	24.0%	52.0%	68.8%	68.0%	71.3%	-3.2%	Higher	67%	Higher	Higher	Yes	1	1	50.0%	2,652.19	2,675.81	23.62	0.89%
221	12/18/17	78.7%	21.3%	57.4%	69.8%	68.9%	73.0%	-4.1%	Higher	70%	Higher	Lower	No	0	0	49.8%	2,685.92	2,683.34	-2.58	-0.10%
222	12/25/17	70.2%	29.8%	40.4%	69.2%	70.2%	66.8%	3.4%	Higher	55%	Lower	Lower	No	0	0	49.5%	2,679.09	2,673.61	-5.48	-0.20%
223	01/01/18	51.1%	48.9%	2.2%	69.1%	67.0%	71.4%	-4.4%	Higher	52%	Lower	Higher	Yes	1	1	49.8%	2,683.73	2,743.15	59.42	2.21%
224	01/08/18	66.7%	33.3%	33.3%	72.3%	71.6%	73.5%	-1.9%	Higher	64%	Higher	Higher	Yes	1	1	50.0%	2,742.67	2,786.24	43.57	1.59%
225	01/15/18	74.2%	25.8%	48.4%	69.8%	71.0%	66.3%	4.7%	Higher	73%	Higher	Higher	Yes	1	1	50.2%	2,798.96	2,810.30	11.34	0.41%
226	01/22/18	61.8%	38.2%	23.6%	68.7%	69.0%	68.3%	0.6%	Higher	56%	Higher	Higher	Yes	1	1	50.5%	2,809.16	2,872.87	63.71	2.27%
227	01/29/18	68.9%	31.1%	37.8%	71.2%	70.2%	73.6%	-3.4%	Higher	53%	Lower	Lower	No	0	0	50.2%	2,867.23	2,762.13	-105.10	-3.67%
228	02/05/18	38.5%	61.5%	-23.1%	70.4%	70.0%	70.6%	-0.6%	Lower	58%	Higher	Lower	Yes	1	0	50.4%	2,741.06	2,619.55	-121.51	-4.43%
229	02/12/18	64.9%	35.1%	29.8%	67.7%	69.3%	64.8%	4.6%	Higher	63%	Higher	Higher	Yes	1	1	50.7%	2,636.75	2,732.22	95.47	3.62%
230	02/19/18	52.5%	47.5%	5.1%	66.6%	64.8%	68.6%	-3.7%	Higher	56%	Lower	Higher	Yes	1	1	50.9%	2,722.99	2,747.30	24.31	0.89%
231	02/26/18	64.4%	35.6%	28.9%	68.8%	66.4%	73.1%	-6.8%	Higher	59%	Lower	Lower	No	0	0	50.7%	2,757.37	2,691.25	-66.12	-2.40%
232	03/05/18	58.5%	41.5%	17.1%	66.2%	67.5%	64.4%	3.1%	Higher	64%	Higher	Higher	Yes	1	1	50.9%	2,681.06	2,786.57	105.51	3.94%
233	03/12/18	72.0%	28.0%	44.0%	69.7%	69.7%	69.6%	0.1%	Higher	54%	Lower	Lower	No	0	0	50.7%	2,790.54	2,752.01	-38.53	-1.38%
234	03/19/18	63.2%	36.8%	26.3%	65.5%	66.0%	65.0%	1.0%	Higher	57%	Higher	Lower	No	0	0	50.4%	2,741.38	2,588.26	-153.12	-5.59%
235	03/26/18	42.0%	58.0%	-16.0%	69.1%	65.5%	71.7%	-6.2%	Lower	80%	Higher	Higher	No	0	1	50.2%	2,619.35	2,640.87	21.52	0.82%
236	04/02/18	69.8%	30.2%	39.5%	64.5%	64.8%	63.9%	1.0%	Higher	64%	Lower	Lower	No	0	0	50.0%	2,633.45	2,604.47	-28.98	-1.10%
237	04/09/18	54.7%	45.3%	9.4%	66.8%	65.7%	68.1%	-2.4%	Higher	53%	Higher	Higher	Yes	1	1	50.2%	2,617.18	2,656.30	39.12	1.49%
238	04/16/18	64.9%	35.1%	29.7%	67.2%	69.8%	62.3%	7.5%	Higher	69%	Higher	Higher	Yes	1	1	50.4%	2,670.10	2,670.14	0.04	0.00%
239	04/23/18	53.1%	46.9%	6.3%	66.7%	66.8%	66.7%	0.1%	Higher	61%	Higher	Lower	No	0	0	50.2%	2,675.40	2,669.91	-5.49	-0.21%
240	04/30/18	58.1%	41.9%	16.1%	66.9%	64.3%	70.4%	-6.1%	Higher	60%	Higher	Lower	No	0	0	50.0%	2,675.47	2,663.42	-12.05	-0.45%
241	05/07/18	57.5%	42.5%	15.0%	66.5%	68.5%	63.8%	4.7%	Higher	67%	Higher	Higher	Yes	1	1	50.2%	2,680.34	2,727.72	47.38	1.77%
242	05/14/18	65.1%	34.9%	30.2%	66.1%	69.0%	60.7%	8.3%	Higher	69%	Higher	Lower	No	0	0	50.0%	2,738.47	2,712.97	-25.50	-0.93%
243	05/21/18	48.9%	51.1%	-2.1%	64.3%	62.4%	66.0%	-3.7%	Lower	87%	Higher	Lower	Yes	1	0	50.2%	2,735.39	2,721.33	-14.06	-0.51%
244	05/28/18	64.6%	35.4%	29.2%	65.9%	64.8%	66.9%	-2.1%	Higher	54%	Higher	Higher	Yes	1	1	50.4%	2,705.11	2,734.62	29.51	1.09%
245	06/04/18	65.8%	34.2%	31.6%	67.5%	70.4%	61.9%	8.5%	Higher	58%	Higher	Higher	Yes	1	1	50.6%	2,741.67	2,779.03	37.36	1.36%
246	06/11/18	67.9%	32.1%	35.8%	65.9%	68.2%	60.9%	7.3%	Higher	62%	Higher	Lower	No	0	0	50.4%	2,780.18	2,779.42	-0.76	-0.03%
247	06/18/18	55.3%	44.7%	10.5%	67.1%	66.2%	68.2%	-2.1%	Higher	53%	Lower	Lower	No	0	0	50.2%	2,765.79	2,754.88	-10.91	-0.39%
248	06/25/18	44.7%	55.3%	-10.5%	64.7%	63.2%	66.0%	-2.7%	Lower	59%	Higher	Lower	Yes	1	0	50.4%	2,742.94	2,718.37	-24.57	-0.90%
249	07/02/18	62.5%	37.5%	25.0%	65.3%	62.6%	69.7%	-7.1%	Higher	59%	Lower	Higher	Yes	1	1	50.6%	2,704.95	2,759.82	54.87	2.03%
250	07/09/18	71.1%	28.9%	42.2%	66.1%	64.7%	69.6%	-4.9%	Higher	56%	Lower	Higher	Yes	1	1	50.8%	2,775.62	2,801.31	25.69	0.93%
251	07/16/18	75.0%	25.0%	50.0%	69.1%	72.0%	60.5%	11.5%	Higher	63%	Higher	Higher	Yes	1	1	51.0%	2,797.36	2,801.83	4.47	0.16%
252	07/23/18	51.3%	48.7%	2.6%	65.9%	67.8%	64.0%	3.8%	Higher	64%	Lower	Higher	Yes	1	1	51.2%	2,799.17	2,818.82	19.65	0.70%
253	07/30/18	46.2%	53.8%	-7.7%	68.5%	69.7%	67.4%	2.3%	Lower	64%	Higher	Higher	No	0	1	51.0%	2,819.00	2,840.35	21.35	0.76%
254	08/06/18	62.2%	37.8%	24.3%	65.8%	67.6%	62.9%	4.8%	Higher	73%	Higher	Lower	No	0	0	50.8%	2,840.29	2,833.28	-7.01	-0.25%
255	08/13/18	47.2%	52.8%	-5.6%	64.6%	65.0%	64.2%	0.8%	Lower	65%	Higher	Higher	No	0	0	50.6%	2,835.46	2,850.13	14.67	0.52%
256	08/20/18	57.1%	42.9%	14.3%	67.0%	66.0%	68.3%	-2.3%	Higher	67%	Lower	Higher	Yes	1	1	50.8%	2,853.93	2,874.69	20.76	0.73%
257	08/27/18	66.7%	33.3%	33.3%	66.8%	68.6%	63.2%	5.5%	Higher	65%	Higher	Higher	Yes	1	1	51.0%	2,884.69	2,901.52	16.83	0.58%
258	09/03/18	41.7%	58.3%	-16.7%	64.0%	61.3%	66.0%	-4.6%	Lower	58%	Higher	Lower	Yes	1	0	51.2%	2,896.96	2,871.68	-25.28	-0.87%
259	09/10/18	42.4%	57.6%	-15.2%	61.8%	57.1%	65.3%	-8.1%	Lower	68%	Higher	Higher	No	0	1	51.0%	2,881.39	2,904.98	23.59	0.82%
260	09/17/18	51.4%	48.6%	2.9%	65.9%	68.3%	63.2%	5.1%	Higher	60%	Higher	Higher	Yes	1	1	51.2%	2,903.83	2,929.67	25.84	0.89%
261	09/24/18	40.6%	59.4%	-18.8%	62.8%	61.2%	64.0%	-2.8%	Lower	57%	Higher	Lower	Yes	1	0	51.4%	2,921.83	2,913.98	-7.85	-0.27%
262	10/01/18	62.1%	37.9%	24.1%	63.3%	59.7%	69.1%	-9.4%	Higher	52%	Higher	???	???	???	???	???	???	???	???	???

Weekly Reports Page: TimingResearch.com/reports

Raw Data Page: TimingResearch.com/rawdata

Current Survey Page: TimingResearch.com/currentsurvey

Any feedback: TimingResearch.com/contact

NOTE: The following open-ended answers are solely the opinions of the anonymous respondents to this survey. Responses are mostly unedited, but some have been reformatted slightly for to make them easier to read. Some irrelevant responses (e.g. "none"), or anything obviously fake, or copy and pasted responses have been omitted. All-caps responses have been changed to all lowercase. All responses for each week, unedited, are available in the raw data spreadsheets at TimingResearch.com/data.

Question #3. For your answer to Question #1, please share what specific reason(s) you think the S&P500 will be heading the direction you chose.

“Higher” Respondent Answers:

- I like Donald
- It's a bull market!
- Bounce off of daily 20 period EMA & higher low.
- 50 d ma and 20 day ma up, at bottom of upward channel
- Holding the 50% retracement long in the S&P at \$2905
- Mid-term elections.
- history.
- still buying
- The S&P was in consolidation the previous week, which provides a good setup for a rise this week. Also, a nice GDP increase and good earnings expectations should help.
- Elliott wave pattern.
- Large volume trades show more selling. Low volume trades still show buying. I don't know whether "the top" is in yet, but I'm sure not going to buy the dips.

“Lower” Respondent Answers:

- Overbought markets. 3rd qtr ended - sellers should return.
- Tariffs
- Current white administration is bringing too much controversy and distrust
- Due to the Presidents nonsense position size
- Its ending pullback in all my s tocks
- Tarriffs!

Question #4. What procedures do you use for trade management? (e.g. position size, stops, scaling in or out, etc.)

- position size, stops, sometimes scaling
- I try to keep position sizes of relatively the same size.
- Mental stops
- I don't know
- start small, 8% loss stops, take off profits 35%
- Scaling in.
- Daily loss limit, weekly loss limit, # of stops per day.
- Position size
- Position size, stops, market direction.
- Scaling
- stops
- Proper stops, no scaling, support & resistance, use of trailing stops if trending
- Position sizing used with various strategies. All in all out also used depending on strategy used. Stops are very important and honoring them is critical in maintaining risk management.
- position size
- Algorithmic

Question #5. Additional Comments/Questions/Suggestions?

Thank you for all the feedback, feel free to [contact us](#) at any time with any other questions or comments.

- seasonality is against my answers.
- Is there a better and close too 100% certainty to read the market in the USA??

Standing Predictions

Below are some of the one-time prediction-type questions asked in previous weeks that have not been finalized yet or have been finalized recently. Suggest a future question [here](#).

Week 171, 01/21/18 Report - The S&P500 closed for 2017 at 2,673.61. Where do you think it will close for 2018?

- 57.8%: Higher 2-20%.
- 15.6%: Lower 2-20%.
- 13.3%: Higher 21% or more.
- 6.7%: Unchanged. Less than 2% change Higher or Lower.
- 6.7%: Lower 21% or more.