

[Monday, 1PM ET: Top Trading Experts Discuss This Report! Click Here To Learn More.](#)

**Question #1. Which direction do you think the S&P500 index will move from this coming Monday's open to Friday's close (October 15th to October 19th)?**

*(The order of possible responses to this question on the survey were randomized for each viewer.)*

Higher: 51.4%

Lower: 48.6%

Higher/Lower Difference: 2.9%

**Question #2. Rate your confidence in your answer to Question #2 by estimating the probability you have correctly predicted next week's market move.**

Average of All Responses: 66.4%

Average For "Higher" Responses: 64.4%

Average For "Lower" Responses: 68.3%

Higher/Lower Difference: -3.9%

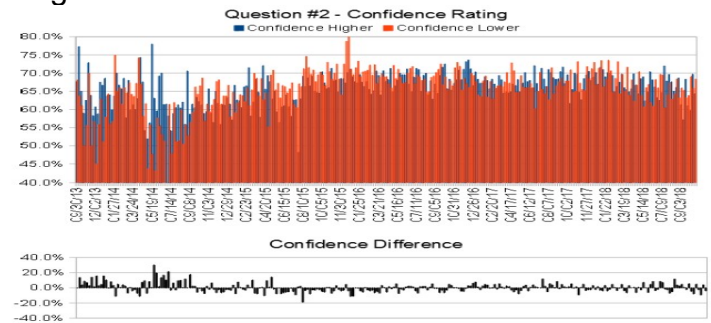
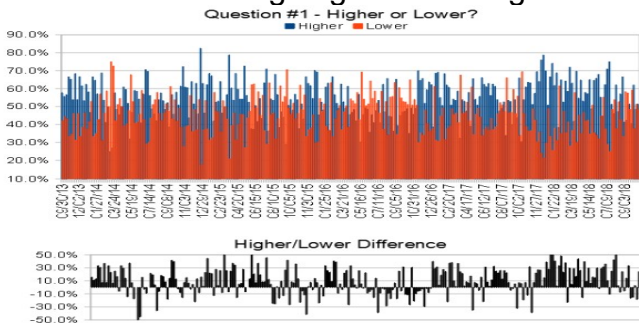
**Responses Submitted This Week: 37**

**52-Week Average Number of Responses: 46.5**

**TimingResearch Crowd Forecast Prediction: 54% Chance Higher**

*This prediction is an attempt by the editor of this newsletter to use the full 5 year history of data collected from this project to forecast a probability estimate for whether this week's sentiment is going to be correct and ultimately what the markets will do this coming week.*

Details: Last week's majority sentiment from the survey was 51.4% Lower, and the Crowd Forecast Indicator prediction was 66% Chance Higher; the S&P500 closed 3.84% Lower for the week. This week's majority sentiment from the survey is 51.4% Higher with a greater average confidence from those who responded Lower (this just happens to be the exact opposite of last week). Similar conditions have been observed 26 times in the previous 263 weeks, with the majority sentiment being correct 54% of the time, and with an average S&P500 move of 0.06% Higher for the week. Based on that history, the TimingResearch Crowd Forecast Indicator is forecasting a 54% Chance that the S&P500 is going to move Higher this coming week.



Raw Data Page (raw data files include full history spreadsheet and the above charts): [TimingResearch.com/data](http://TimingResearch.com/data).

# TimingResearch Crowd Forecast News Report #264 (10/14/2018) - Page 2/8

[Monday, 1PM ET: Top Trading Experts Discuss This Report! Click Here To Learn More.](#)

Full Weekly Results (full version of this chart available in the [raw data](#) spreadsheet for this week, "Date" field below lists the Monday of the week being predicted).

Overall Sentiment All-Time "Correct" Percentage: **51.4%**  
 Overall Sentiment 52-Week "Correct" Percentage: **60.8%**  
 Overall Sentiment 12-Week "Correct" Percentage: **54.5%**

Only the previous 52 weeks of data are shown below, please [download the raw data](#) to see the full range of past data.

212	10/16/17	53.8%	46.2%	7.7%	65.1%	65.5%	64.7%	0.8%	Higher	59%	Higher	Higher	Yes	1	1	49.0%	2,555.57	2,575.21	19.64	0.77%
213	10/23/17	61.0%	39.0%	22.0%	68.1%	70.0%	65.0%	5.0%	Higher	62%	Higher	Higher	Yes	1	1	49.3%	2,578.08	2,581.07	2.99	0.12%
214	10/30/17	63.6%	36.4%	27.3%	70.9%	69.7%	73.2%	-3.4%	Higher	52%	Lower	Higher	Yes	1	1	49.5%	2,577.75	2,587.84	10.09	0.39%
215	11/06/17	63.3%	36.7%	26.7%	65.7%	64.7%	67.3%	-2.5%	Higher	52%	Lower	Higher	No	0	0	49.3%	2,587.47	2,582.30	-5.17	-0.20%
216	11/13/17	51.2%	48.8%	2.3%	64.1%	62.7%	65.5%	-2.8%	Higher	55%	Lower	Higher	Yes	1	1	49.5%	2,576.53	2,578.85	2.32	0.09%
217	11/20/17	57.5%	42.5%	15.0%	67.1%	68.5%	65.3%	3.2%	Higher	60%	Higher	Higher	Yes	1	1	49.8%	2,579.49	2,602.42	22.93	0.89%
218	11/27/17	69.6%	30.4%	39.1%	70.2%	69.5%	71.8%	-2.3%	Higher	63%	Higher	Higher	Yes	1	1	50.0%	2,602.66	2,642.22	39.56	1.52%
219	12/04/17	64.0%	36.0%	28.0%	69.8%	70.5%	68.6%	1.9%	Higher	58%	Higher	Lower	No	0	0	49.8%	2,657.19	2,651.50	-5.69	-0.21%
220	12/11/17	76.0%	24.0%	52.0%	68.8%	68.0%	71.3%	-3.2%	Higher	67%	Higher	Higher	Yes	1	1	50.0%	2,652.19	2,675.81	23.62	0.89%
221	12/18/17	78.7%	21.3%	57.4%	69.8%	68.9%	73.0%	-4.1%	Higher	70%	Higher	Lower	No	0	0	49.8%	2,685.92	2,683.34	-2.58	-0.10%
222	12/25/17	70.2%	29.8%	40.4%	69.2%	70.2%	66.8%	3.4%	Higher	55%	Lower	Lower	No	0	0	49.5%	2,679.09	2,673.61	-5.48	-0.20%
223	01/01/18	51.1%	48.9%	2.2%	69.1%	67.0%	71.4%	-4.4%	Higher	52%	Lower	Higher	Yes	1	1	49.8%	2,683.73	2,743.15	59.42	2.21%
224	01/08/18	66.7%	33.3%	33.3%	72.3%	71.6%	73.5%	-1.9%	Higher	64%	Higher	Higher	Yes	1	1	50.0%	2,742.67	2,786.24	43.57	1.59%
225	01/15/18	74.2%	25.8%	48.4%	69.8%	71.0%	66.3%	4.7%	Higher	73%	Higher	Higher	Yes	1	1	50.2%	2,798.96	2,810.30	11.34	0.41%
226	01/22/18	61.8%	38.2%	23.6%	68.7%	69.0%	68.3%	0.6%	Higher	56%	Higher	Higher	Yes	1	1	50.5%	2,809.16	2,872.87	63.71	2.27%
227	01/29/18	68.9%	31.1%	37.8%	71.2%	70.2%	73.6%	-3.4%	Higher	53%	Lower	Lower	No	0	0	50.2%	2,867.23	2,762.13	-105.10	-3.67%
228	02/05/18	38.5%	61.5%	-23.1%	70.4%	70.0%	70.6%	-0.6%	Lower	58%	Higher	Lower	Yes	1	0	50.4%	2,741.06	2,619.55	-121.51	-4.43%
229	02/12/18	64.9%	35.1%	29.8%	67.7%	69.3%	64.8%	4.6%	Higher	63%	Higher	Higher	Yes	1	1	50.7%	2,636.75	2,732.22	95.47	3.62%
230	02/19/18	52.5%	47.5%	5.1%	66.6%	64.8%	68.6%	-3.7%	Higher	56%	Lower	Higher	Yes	1	1	50.9%	2,722.99	2,747.30	24.31	0.89%
231	02/26/18	64.4%	35.6%	28.9%	68.8%	66.4%	73.1%	-6.8%	Higher	59%	Lower	Lower	No	0	0	50.7%	2,757.37	2,691.25	-66.12	-2.40%
232	03/05/18	58.5%	41.5%	17.1%	66.2%	67.5%	64.4%	3.1%	Higher	64%	Higher	Higher	Yes	1	1	50.9%	2,681.06	2,786.57	105.51	3.94%
233	03/12/18	72.0%	28.0%	44.0%	69.7%	69.7%	69.6%	0.1%	Higher	54%	Lower	Lower	No	0	0	50.7%	2,790.54	2,752.01	-38.53	-1.38%
234	03/19/18	63.2%	36.8%	26.3%	65.5%	66.0%	65.0%	1.0%	Higher	57%	Higher	Lower	No	0	0	50.4%	2,741.38	2,588.26	-153.12	-5.59%
235	03/26/18	42.0%	58.0%	-16.0%	69.1%	65.5%	71.7%	-6.2%	Lower	80%	Higher	Higher	No	0	1	50.2%	2,619.35	2,640.87	21.52	0.82%
236	04/02/18	69.8%	30.2%	39.5%	64.5%	64.8%	63.9%	1.0%	Higher	64%	Lower	Lower	No	0	0	50.0%	2,633.45	2,604.47	-28.98	-1.10%
237	04/09/18	54.7%	45.3%	9.4%	66.8%	65.7%	68.1%	-2.4%	Higher	53%	Higher	Higher	Yes	1	1	50.2%	2,617.18	2,656.30	39.12	1.49%
238	04/16/18	64.9%	35.1%	29.7%	67.2%	69.8%	62.3%	7.5%	Higher	69%	Higher	Higher	Yes	1	1	50.4%	2,670.10	2,670.14	0.04	0.00%
239	04/23/18	53.1%	46.9%	6.3%	66.7%	66.8%	66.7%	0.1%	Higher	61%	Higher	Lower	No	0	0	50.2%	2,675.40	2,669.91	-5.49	-0.21%
240	04/30/18	58.1%	41.9%	16.1%	66.9%	64.3%	70.4%	-6.1%	Higher	60%	Higher	Lower	No	0	0	50.0%	2,675.47	2,663.42	-12.05	-0.45%
241	05/07/18	57.5%	42.5%	15.0%	66.5%	68.5%	63.8%	4.7%	Higher	67%	Higher	Higher	Yes	1	1	50.2%	2,680.34	2,727.72	47.38	1.77%
242	05/14/18	65.1%	34.9%	30.2%	66.1%	69.0%	60.7%	8.3%	Higher	69%	Higher	Lower	No	0	0	50.0%	2,738.47	2,712.97	-25.50	-0.93%
243	05/21/18	48.9%	51.1%	-2.1%	64.3%	62.4%	66.0%	-3.7%	Lower	87%	Higher	Lower	Yes	1	1	50.2%	2,735.39	2,721.33	-14.06	-0.51%
244	05/28/18	64.6%	35.4%	29.2%	65.9%	64.8%	66.9%	-2.1%	Higher	54%	Higher	Higher	Yes	1	1	50.4%	2,705.11	2,734.62	29.51	1.09%
245	06/04/18	65.8%	34.2%	31.6%	67.5%	70.4%	61.9%	8.5%	Higher	58%	Higher	Higher	Yes	1	1	50.6%	2,741.67	2,779.03	37.36	1.36%
246	06/11/18	67.9%	32.1%	35.8%	65.9%	68.2%	60.9%	7.3%	Higher	62%	Higher	Lower	No	0	0	50.4%	2,780.18	2,779.42	-0.76	-0.03%
247	06/18/18	55.3%	44.7%	10.5%	67.1%	66.2%	68.2%	-2.1%	Higher	53%	Lower	Lower	No	0	0	50.2%	2,765.79	2,754.88	-10.91	-0.39%
248	06/25/18	44.7%	55.3%	-10.5%	64.7%	63.2%	66.0%	-2.7%	Lower	59%	Higher	Lower	Yes	1	1	50.4%	2,742.94	2,718.37	-24.57	-0.90%
249	07/02/18	62.5%	37.5%	25.0%	65.3%	62.6%	69.7%	-7.1%	Higher	59%	Lower	Higher	Yes	1	1	50.6%	2,704.95	2,759.82	54.87	2.03%
250	07/09/18	71.1%	28.9%	42.2%	66.1%	64.7%	69.6%	-4.9%	Higher	56%	Lower	Higher	Yes	1	1	50.8%	2,775.62	2,801.31	25.69	0.93%
251	07/16/18	75.0%	25.0%	50.0%	69.1%	72.0%	60.5%	11.5%	Higher	63%	Higher	Higher	Yes	1	1	51.0%	2,797.36	2,801.83	4.47	0.16%
252	07/23/18	51.3%	48.7%	2.6%	65.9%	67.8%	64.0%	3.8%	Higher	64%	Lower	Higher	Yes	1	1	51.2%	2,799.17	2,818.82	19.65	0.70%
253	07/30/18	46.2%	53.8%	-7.7%	68.5%	69.7%	67.4%	2.3%	Lower	64%	Higher	Higher	No	0	1	51.0%	2,819.00	2,840.35	21.35	0.76%
254	08/06/18	62.2%	37.8%	24.3%	65.8%	67.6%	62.9%	4.8%	Higher	73%	Higher	Lower	No	0	0	50.8%	2,840.29	2,833.28	-7.01	-0.25%
255	08/13/18	47.2%	52.8%	-5.6%	64.6%	65.0%	64.2%	0.8%	Lower	65%	Higher	Higher	No	0	1	50.6%	2,835.46	2,850.13	14.67	0.52%
256	08/20/18	57.1%	42.9%	14.3%	67.0%	66.0%	68.3%	-2.3%	Higher	67%	Lower	Higher	Yes	1	1	50.8%	2,853.93	2,874.69	20.76	0.73%
257	08/27/18	66.7%	33.3%	33.3%	66.8%	68.6%	63.2%	5.5%	Higher	65%	Higher	Higher	Yes	1	1	51.0%	2,884.69	2,901.52	16.83	0.58%
258	09/03/18	41.7%	58.3%	-16.7%	64.0%	61.3%	66.0%	-4.8%	Lower	58%	Higher	Lower	Yes	1	0	51.2%	2,896.96	2,871.68	-25.28	-0.87%
259	09/10/18	42.4%	57.6%	-15.2%	61.8%	57.1%	65.3%	-8.1%	Lower	68%	Higher	Higher	No	0	1	51.0%	2,881.39	2,904.98	23.59	0.82%
260	09/17/18	51.4%	48.6%	2.9%	65.9%	68.3%	63.2%	5.1%	Higher	60%	Higher	Higher	Yes	1	1	51.2%	2,903.83	2,929.67	25.84	0.89%
261	09/24/18	40.6%	59.4%	-18.8%	62.8%	61.2%	64.0%	-2.8%	Lower	57%	Higher	Lower	Yes	1	0	51.4%	2,921.83	2,913.98	-7.85	-0.27%
262	10/01/18	62.1%	37.9%	24.1%	63.3%	59.7%	69.1%	-9.4%	Higher	52%	Higher	Lower	No	0	0	51.2%	2,926.29	2,885.57	-40.72	-1.39%
263	10/08/18	48.6%	51.4%	-2.9%	67.7%	69.7%	65.8%	3.9%	Lower	66%	Higher	Lower	Yes	1	0	51.4%	2,877.53	2,767.13	-110.40	-3.84%
264	10/15/18	51.4%	48.6%	2.9%	66.4%	68.4%	68.3%	-3.9%	Higher	???	???	???	???	???	???	???	???	???	???	???

Weekly Reports Page: [TimingResearch.com/reports](http://TimingResearch.com/reports)  
 Raw Data Page: [TimingResearch.com/rawdata](http://TimingResearch.com/rawdata)  
 Current Survey Page: [TimingResearch.com/currentsurvey](http://TimingResearch.com/currentsurvey)  
 Any feedback: [TimingResearch.com/contact](http://TimingResearch.com/contact)

*NOTE: The following open-ended answers are solely the opinions of the anonymous respondents to this survey. Responses are mostly unedited, but some have been reformatted slightly for to make them easier to read. Some irrelevant responses (e.g. "none"), or anything obviously fake, or copy and pasted responses have been omitted. All-caps responses have been changed to all lowercase. All responses for each week, unedited, are available in the raw data spreadsheets at [TimingResearch.com/data](http://TimingResearch.com/data).*

**Question #3. For your answer to Question #1, please share what specific reason(s) you think the S&P500 will be heading the direction you chose.**

### **“Higher” Respondent Answers:**

- Whether S&P will go higher this week depends on earning reports from NFLX and PG. It depends especially on future guidance indicated by these companies.
- Market has corrected, and is ready to move on up.
- I think things are still leaning Republican and it may stay bullish or go back up some maybe I guess
- weak bounce, bearish flad
- Friday afternoon's rally off of support gave us a hammer. Continued upside is expected. Next resistance could be at 2885-90, the midpoint of the Bollinger band.
- I believe the market is manipulated to some degree by Wall Street. The some for the silver market (J.P. Morgan, etc.)
- Rebound time.
- Market is extreme oversold.
- Bounce off resistance
- done selling

### **“Lower” Respondent Answers:**

- broken trend lines on bigger tech stocks as well as macro events going on short term. Economy stable for earnings reports starting should consolidate markets in month ahead
- The big question after Wed/Thurs drop is 1) is this just a correction, or 2) is this the crash so many were expecting. We're not going to know the answer to the above until the data is in at the end of next week. I suspect it's a "correction" and the next crash will come inside the next 1 to 3 years during which there could be several more corrections. So next week I'm expecting the sell off to continue but reach some point of consolidation / stabilization. After that the markets could continue upwards with a bit more volatility than was occurring prior to this week.
- Interest rate rise uncertainty
- The downtrend that started after the Presidential emergency tweet on that Wednesday 10 days ago will continue. It will end when the public says "just get me out".
- Retest of the recent low
- too much debt economic instability consumer spending wanes stocks will be affected

negatively

- October swoon
- Lower highs & lower lows & below 100 day moving average & at 200 day moving average
- Overvalued market
- History shows this as a bad week.
- I really dont know y but that s wut i think it will b
- High volatility and big downdrafts make the markets look risky to the downside right now
- Appears to have entered "a" wave
- Last week drop

### **No Prediction:**

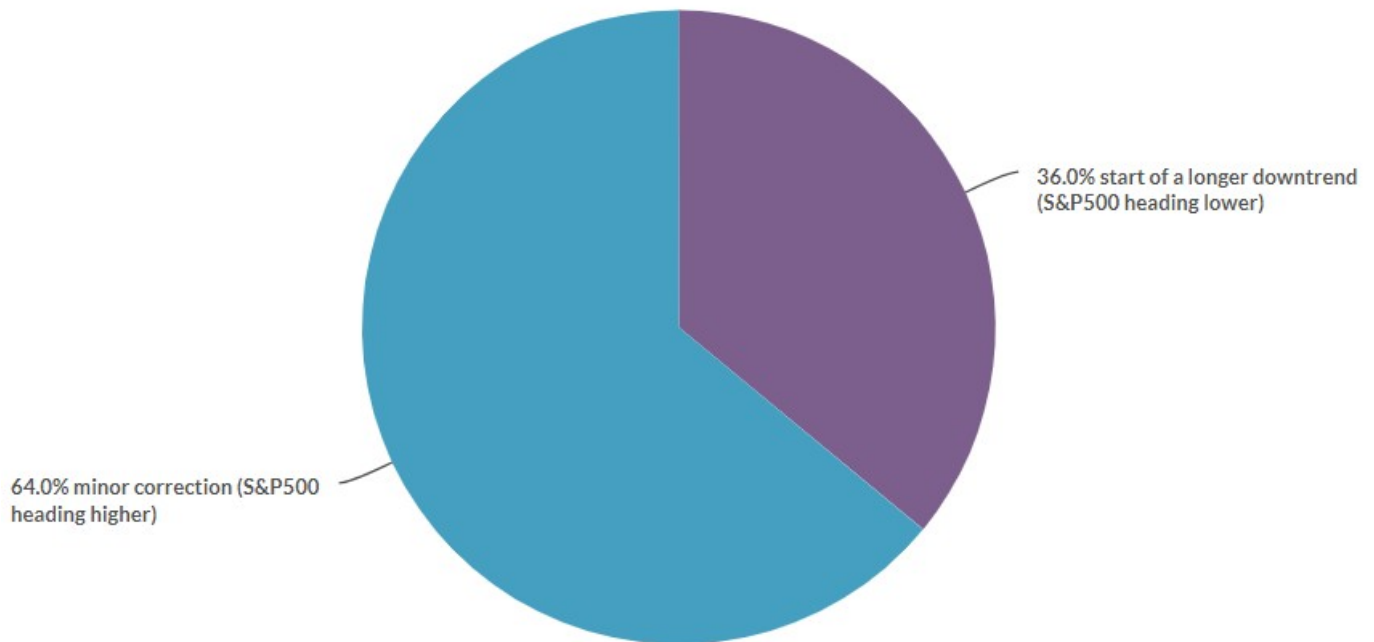
- I gave no answer because the market has been on such a roller coaster ride that I don't even want to hazard a guess for such a short term.

[Monday, 1PM ET: Top Trading Experts Discuss This Report! Click Here To Learn More.](#)

---

**Question #4a. Do you think the drop in the markets this week were the start of a longer downtrend or a minor correction on the way to new highs (i.e. 6 months from now do you think the S&P500 will be higher or lower than today)?**

- 64% - minor correction (S&P500 heading higher)
- 36% - start of a longer downtrend (S&P500 heading lower)



## Question #4b. Why?

### “Minor correction (S&P500 heading higher)” Respondent Answers:

- October typically has been a volatile month for the stock market. Additionally, there have been pullbacks to some extent prior to earning season. Investing community is a bit more wary prior to this earning season because of potential warnings which companies might issue because of tariffs and the trade war. I am hoping the market can digest any of these warnings and continue its climb up. Especially tech stocks such as Apple, AMZN, & Microsoft.
- Republicans will be victorious in my opinion are better candidates say especially against Baria
- explained in previous comment
- Got a feeling
- nothing changed fundamentally
- In previous instances of these bounces off of support, the market has moved up for a month or more. After that, it gets quite unpredictable.
- Market was overbought to the max. The downtrend will continue and will end when the public says "just get me out". Then the market can return to new highs.
- Earnings & economy are strong.

### “Start of a longer downtrend (S&P500 heading lower)” Respondent Answers:

- too much debt currency will suffer trade war bonds, pensions, banks will suffer less consumer spending and lose confidence
- If trade war with China, inflation will go higher & lower profits which will cut P/E ratios.
- Interest rate increases, and perception the mid-year election results are obvious.
- Market overvalued for too long and investors are moving to safe havens
- Over priced stocks
- Bull is too long in the tooth

### Question #5. Additional Comments/Questions/Suggestions?

Thank you for all the feedback, feel free to [contact us](#) at any time with any other questions or comments.

- The big CRASH I'm expecting still has 1 to 3 years to occur and I believe it will occur after the offshore money coming into the US markets begins drying up. The US will be the last stop in the search for a safe haven. That's when what is happening that's beginning to occur in troubled economies around the world begins finally to occur here. At that point the economic crisis will be worldwide. No more safe havens to flee too.

## Standing Predictions

Below are some of the one-time prediction-type questions asked in previous weeks that have not been finalized yet or have been finalized recently. Suggest a future question [here](#).

**Week #264, 10/14/18 Report** - Do you think the drop in the markets this week were the start of a longer downtrend or a minor correction on the way to new highs (i.e. 6 months from now do you think the S&P500 will be higher or lower than today)?

- 64% - minor correction (S&P500 heading higher)
- 36% - start of a longer downtrend (S&P500 heading lower)

**Week #171, 01/21/18 Report** - The S&P500 closed for 2017 at 2,673.61. Where do you think it will close for 2018?

- 57.8%: Higher 2-20%.
- 15.6%: Lower 2-20%.
- 13.3%: Higher 21% or more.
- 6.7%: Unchanged. Less than 2% change Higher or Lower.
- 6.7%: Lower 21% or more.