

[Monday, 1PM ET: Top Trading Experts Discuss This Report! Click Here To Learn More.](#)

Question #1. Which direction do you think the S&P500 index will move from this coming Monday's open to Friday's close (January 7th to 11th)?

(The order of possible responses to this question on the survey were randomized for each viewer.)

Higher: 63.9%

Lower: 36.1%

Higher/Lower Difference: 27.8%

Question #2. Rate your confidence in your answer to Question #2 by estimating the probability you have correctly predicted next week's market move.

Average of All Responses: 68.8%

Average For "Higher" Responses: 70.9%

Average For "Lower" Responses: 65.0%

Higher/Lower Difference: 5.9%

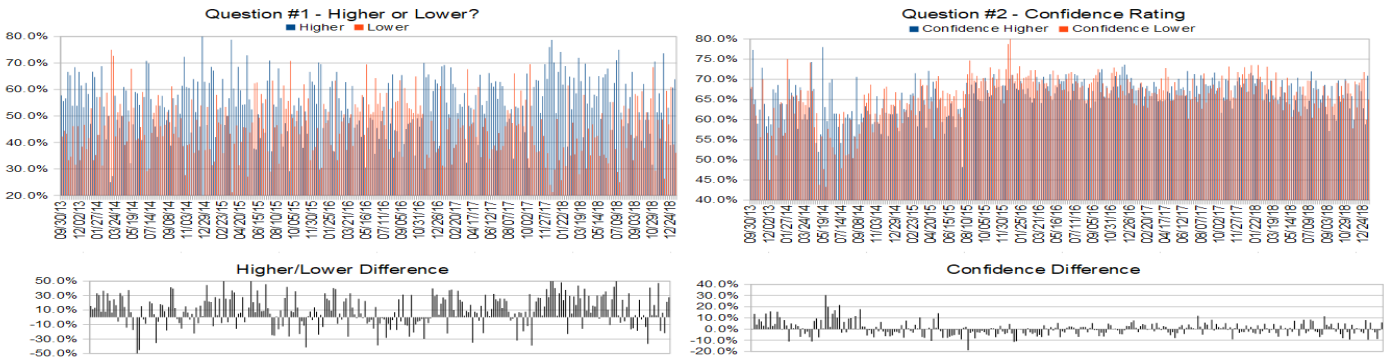
Responses Submitted This Week: 38

52-Week Average Number of Responses: 43.5

TimingResearch Crowd Forecast Prediction: 69% Chance Higher

This prediction is an attempt by the editor of this newsletter to use the full 5 year history of data collected from this project to forecast a probability estimate for whether this week's sentiment is going to be correct and ultimately what the markets will do this coming week.

Details: Last week's majority sentiment from the survey was 60.7% Higher, and the Crowd Forecast Indicator prediction was 56% Chance Higher; the S&P500 closed 1.32% Higher for the week. This week's majority sentiment from the survey is 63.9% Higher with a greater average confidence from those who responded Higher. Similar conditions have occurred 29 times in the previous 275 weeks, with the majority sentiment being correct 69% of the time and with an average S&P500 move of 0.19% Higher for the week. Based on that history, the TimingResearch Crowd Forecast Indicator is forecasting a 69% Chance that the S&P500 is going to move Higher this coming week.



Raw Data Page (raw data files include full history spreadsheet and the above charts): TimingResearch.com/data.

TimingResearch Crowd Forecast News Report #276 (01/06/2019) - Page 2/7

[Monday, 1PM ET: Top Trading Experts Discuss This Report! Click Here To Learn More.](#)

Full Weekly Results (full version of this chart available in the [raw data](#) spreadsheet for this week, "Date" field below lists the Monday of the week being predicted).

Overall Sentiment All-Time "Correct" Percentage: 51.3%

Overall Sentiment 52-Week "Correct" Percentage: 56.9%

Overall Sentiment 12-Week "Correct" Percentage: 45.5%

Only the previous 52 weeks of data are shown below, please [download the raw data](#) to see the full range of past data.

224	01/08/18	66.7%	33.3%	33.3%	72.3%	71.6%	73.5%	-1.9%	Higher	64%	Higher	Higher	Yes	1	1	50.0%	2,742.67	2,786.24	43.57	1.59%
225	01/15/18	74.2%	25.8%	48.4%	69.8%	71.0%	66.3%	4.7%	Higher	73%	Higher	Higher	Yes	1	1	50.2%	2,798.96	2,810.30	11.34	0.41%
226	01/22/18	61.8%	38.2%	23.6%	68.7%	69.0%	68.3%	0.6%	Higher	56%	Higher	Higher	Yes	1	1	50.5%	2,809.16	2,872.87	63.71	2.27%
227	01/29/18	68.9%	31.1%	37.8%	71.2%	70.2%	73.6%	-3.4%	Higher	53%	Lower	Lower	No	0	0	50.2%	2,867.23	2,762.13	-105.10	-3.67%
228	02/05/18	38.5%	61.5%	-23.1%	70.4%	70.0%	70.6%	-0.6%	Lower	58%	Higher	Lower	Yes	1	0	50.4%	2,741.06	2,619.55	-121.51	-4.43%
229	02/12/18	64.9%	35.1%	29.8%	67.7%	69.3%	64.8%	4.6%	Higher	63%	Higher	Higher	Yes	1	1	50.7%	2,636.75	2,732.22	95.47	3.62%
230	02/19/18	52.5%	47.5%	5.1%	66.6%	64.8%	68.6%	-3.7%	Higher	56%	Lower	Higher	Yes	1	1	50.9%	2,722.99	2,747.30	24.31	0.89%
231	02/26/18	64.4%	35.6%	28.9%	68.8%	66.4%	73.1%	-6.8%	Higher	59%	Lower	Lower	No	0	0	50.7%	2,757.37	2,691.25	-66.12	-2.40%
232	03/05/18	58.5%	41.5%	17.1%	66.2%	67.5%	64.4%	3.1%	Higher	64%	Higher	Higher	Yes	1	1	50.9%	2,681.06	2,786.57	105.51	3.94%
233	03/12/18	72.0%	28.0%	44.0%	69.7%	69.7%	69.6%	0.1%	Higher	54%	Lower	Lower	No	0	0	50.7%	2,790.54	2,752.01	-38.53	-1.38%
234	03/19/18	63.2%	36.8%	26.3%	65.5%	66.0%	65.0%	1.0%	Higher	57%	Higher	Lower	No	0	0	50.4%	2,741.38	2,588.26	-153.12	-5.59%
235	03/26/18	42.0%	58.0%	-16.0%	69.1%	65.5%	71.7%	-6.2%	Lower	80%	Higher	Higher	No	0	1	50.2%	2,619.35	2,640.87	21.52	0.82%
236	04/02/18	69.8%	30.2%	39.5%	64.5%	64.8%	63.9%	1.0%	Higher	64%	Lower	Lower	No	0	0	50.0%	2,633.45	2,604.47	-28.98	-1.10%
237	04/09/18	54.7%	45.3%	9.4%	66.8%	65.7%	68.1%	-2.4%	Higher	53%	Higher	Higher	Yes	1	1	50.2%	2,617.18	2,656.30	39.12	1.49%
238	04/16/18	64.9%	35.1%	29.7%	67.2%	69.8%	62.3%	7.5%	Higher	69%	Higher	Higher	Yes	1	1	50.4%	2,670.10	2,670.14	0.04	0.00%
239	04/23/18	53.1%	46.9%	6.3%	66.7%	66.8%	66.7%	0.1%	Higher	61%	Higher	Lower	No	0	0	50.2%	2,675.40	2,669.91	-5.49	-0.21%
240	04/30/18	58.1%	41.9%	16.1%	66.9%	64.3%	70.4%	-6.1%	Higher	60%	Higher	Lower	No	0	0	50.0%	2,675.47	2,663.42	-12.05	-0.45%
241	05/07/18	57.5%	42.5%	15.0%	66.5%	68.5%	63.8%	4.7%	Higher	67%	Higher	Higher	Yes	1	1	50.2%	2,680.34	2,727.72	47.38	1.77%
242	05/14/18	65.1%	34.9%	30.2%	66.1%	69.0%	60.7%	8.3%	Higher	69%	Higher	Lower	No	0	0	50.0%	2,738.47	2,712.97	-25.50	-0.93%
243	05/21/18	48.9%	51.1%	-2.1%	64.3%	62.4%	66.0%	-3.7%	Lower	87%	Higher	Lower	Yes	1	1	50.2%	2,735.39	2,721.33	-14.06	-0.51%
244	05/28/18	64.6%	35.4%	29.2%	65.9%	64.8%	66.9%	-2.1%	Higher	54%	Higher	Higher	Yes	1	1	50.4%	2,705.11	2,734.62	29.51	1.09%
245	06/04/18	65.8%	34.2%	31.6%	67.5%	70.4%	61.9%	8.5%	Higher	58%	Higher	Higher	Yes	1	1	50.6%	2,741.67	2,779.03	37.36	1.36%
246	06/11/18	67.9%	32.1%	35.8%	65.9%	68.2%	60.9%	7.3%	Higher	62%	Higher	Lower	No	0	0	50.4%	2,780.18	2,779.42	-0.76	-0.03%
247	06/18/18	55.3%	44.7%	10.5%	67.1%	66.2%	68.2%	-2.1%	Higher	53%	Lower	Lower	No	0	0	50.2%	2,765.79	2,754.88	-10.91	-0.39%
248	06/25/18	44.7%	55.3%	-10.5%	64.7%	63.2%	66.0%	-2.7%	Lower	59%	Higher	Lower	Yes	1	1	50.4%	2,742.94	2,718.37	-24.57	-0.90%
249	07/02/18	62.5%	37.5%	25.0%	65.3%	62.6%	69.7%	-7.1%	Higher	59%	Lower	Higher	Yes	1	0	50.6%	2,704.95	2,759.82	54.87	2.03%
250	07/09/18	71.1%	28.9%	42.2%	66.1%	64.7%	69.6%	-4.9%	Higher	56%	Lower	Higher	Yes	1	1	50.8%	2,775.62	2,801.31	25.69	0.93%
251	07/16/18	75.0%	25.0%	50.0%	69.1%	72.0%	60.5%	11.5%	Higher	63%	Higher	Higher	Yes	1	1	51.0%	2,797.36	2,801.83	4.47	0.16%
252	07/23/18	51.3%	48.7%	2.6%	65.9%	67.8%	64.0%	3.8%	Higher	64%	Lower	Higher	Yes	1	1	51.2%	2,799.17	2,818.82	19.65	0.70%
253	07/30/18	46.2%	53.8%	-7.7%	68.5%	69.7%	67.4%	2.3%	Lower	64%	Higher	Higher	No	0	1	51.0%	2,819.00	2,840.35	21.35	0.76%
254	08/06/18	62.2%	37.8%	24.3%	65.8%	67.6%	62.9%	4.8%	Higher	73%	Higher	Lower	No	0	0	50.8%	2,840.29	2,833.28	-7.01	-0.25%
255	08/13/18	47.2%	52.8%	-5.6%	64.6%	65.0%	64.2%	0.8%	Lower	65%	Higher	Higher	No	0	1	50.6%	2,835.46	2,850.13	14.67	0.52%
256	08/20/18	57.1%	42.9%	14.3%	67.0%	66.0%	68.3%	-2.3%	Higher	67%	Lower	Higher	Yes	1	1	50.8%	2,853.93	2,874.69	20.76	0.73%
257	08/27/18	66.7%	33.3%	33.3%	66.8%	68.8%	63.2%	5.5%	Higher	65%	Higher	Higher	Yes	1	1	51.0%	2,884.69	2,901.52	16.83	0.58%
258	09/03/18	41.7%	58.3%	-16.7%	64.0%	61.3%	66.0%	-4.6%	Lower	58%	Higher	Lower	Yes	1	0	51.2%	2,896.96	2,871.68	-25.28	-0.87%
259	09/10/18	42.4%	57.6%	-15.2%	61.8%	57.1%	65.3%	-8.1%	Lower	68%	Higher	Higher	No	0	1	51.0%	2,881.39	2,904.98	23.59	0.82%
260	09/17/18	51.4%	48.6%	2.9%	65.9%	68.3%	63.2%	5.1%	Higher	60%	Higher	Higher	Yes	1	1	51.2%	2,903.83	2,929.67	25.84	0.89%
261	09/24/18	40.6%	59.4%	-18.8%	62.8%	61.2%	64.0%	-2.8%	Lower	57%	Higher	Lower	Yes	1	0	51.4%	2,921.83	2,913.98	-7.85	-0.27%
262	10/01/18	62.1%	37.9%	24.1%	63.3%	59.7%	69.1%	-9.4%	Higher	52%	Higher	Lower	No	0	0	51.2%	2,926.29	2,885.57	-40.72	-1.39%
263	10/08/18	48.6%	51.4%	-2.9%	67.7%	69.7%	65.8%	3.9%	Lower	68%	Higher	Lower	Yes	1	0	51.4%	2,877.53	2,767.13	-110.40	-3.84%
264	10/15/18	51.4%	48.6%	2.9%	66.4%	64.4%	68.3%	-3.9%	Higher	54%	Higher	Higher	Yes	1	1	51.5%	2,763.83	2,767.78	3.95	0.14%
265	10/22/18	43.3%	56.7%	-13.3%	65.7%	66.2%	65.3%	0.9%	Lower	64%	Higher	Lower	Yes	1	0	51.7%	2,773.94	2,658.69	-115.25	-4.15%
266	10/29/18	31.6%	68.4%	-36.8%	69.7%	70.0%	69.6%	0.4%	Lower	67%	Higher	Higher	No	0	1	51.5%	2,682.65	2,723.06	40.41	1.51%
267	11/05/18	70.6%	29.4%	41.2%	67.2%	66.5%	69.0%	-2.5%	Higher	58%	Higher	Higher	Yes	1	1	51.7%	2,726.37	2,781.01	54.64	2.00%
268	11/12/18	51.4%	48.6%	2.9%	64.6%	62.8%	66.5%	-3.7%	Higher	75%	Higher	Lower	No	0	0	51.5%	2,773.93	2,736.27	-37.66	-1.36%
269	11/19/18	58.5%	41.5%	17.1%	62.9%	65.8%	57.8%	8.0%	Higher	64%	Higher	Lower	No	0	0	51.3%	2,730.74	2,632.56	-98.18	-3.60%
270	11/26/18	51.3%	48.7%	2.6%	64.7%	60.0%	69.5%	-9.5%	Higher	69%	Higher	Higher	Yes	1	1	51.5%	2,849.97	2,760.16	-110.19	-4.16%
271	12/03/18	73.7%	26.3%	47.4%	67.2%	68.8%	63.0%	5.8%	Higher	58%	Higher	Lower	No	0	0	51.3%	2,790.50	2,633.08	-157.42	-5.64%
272	12/10/18	40.5%	59.5%	-19.0%	68.9%	68.5%	69.2%	-0.7%	Lower	71%	Lower	Lower	Yes	1	0	51.5%	2,630.86	2,599.95	-30.91	-1.17%
273	12/17/18	53.1%	46.9%	6.3%	68.4%	67.1%	70.0%	-2.9%	Higher	55%	Higher	Lower	No	0	0	51.3%	2,590.75	2,416.58	-174.17	-6.72%
274	12/24/18	39.0%	61.0%	-22.0%	68.3%	62.8%	71.8%	-9.0%	Lower	83%	Higher	Higher	No	0	1	51.1%	2,400.56	2,485.74	85.18	3.55%
275	12/31/18	60.7%	39.3%	21.4%	59.3%	58.8%	60.0%	-1.2%	Higher	56%	Higher	Higher	Yes	1	1	51.3%	2,498.94	2,531.94	33.00	1.32%
276	01/07/19	63.9%	36.1%	27.8%	68.8%	70.9%	65.0%	5.9%	Higher	57%	Higher	???	???	???	???	???	???	???	???	???

Weekly Reports Page: TimingResearch.com/reports

Raw Data Page: TimingResearch.com/rawdata

Current Survey Page: TimingResearch.com/currentsurvey

Any feedback: TimingResearch.com/contact

NOTE: The following open-ended answers are solely the opinions of the anonymous respondents to this survey. Responses are mostly unedited, but some have been reformatted slightly for to make them easier to read. Some irrelevant responses (e.g. "none"), or anything obviously fake, or copy and pasted responses have been omitted. All-caps responses have been changed to all lowercase. All responses for each week, unedited, are available in the raw data spreadsheets at TimingResearch.com/data.

Question #3. For your answer to Question #1, please share what specific reason(s) you think the S&P500 will be heading the direction you chose.

“Higher” Respondent Answers:

- cause up
- New lows have disappeared and this week is historically up
- Some of the technicals (Fibonacci levels) indicate that next week will be up
- 1. Oversold last 2-3 months 2 Solution of China tax issues 3. January reinvestment/new funds 4. Easing of potential interest rate increase
- Historically best six months
- measured move down with a reversal up accompanied by 10 times up volume to down volume
- Market structure tells we are in a down trend. The market has already come down a lot so any upward move now is a short-term pullback.
- Blue chips have hit several times book value, the mark of bear market bottoms. Value buyers are coming in.
- momentum
- random up week in a down market
- Still looking for a move up to the next resistance of 2575 or a bit higher, before the market turns back down.
- volume
- Upmove was very strong I don't think it's over yet even if this might be just a bear market upmove.

“Lower” Respondent Answers:

- Sell programs
- Major down trend
- The reasons for the markets decline have not changed. The hope for change created strong short covering. The reality of "no" change will drive the markets lower again.
- We closed high on Friday and on Saturday we have a Solar Eclipse and Uranus goes direct, this normally means a reversal in the market not a continuation. Friday next week the Sun and Pluto goe into a conjunction often meaning a bottom.
- we hit the 20ema and feel we will head back down to re-test

[Monday, 1PM ET: Top Trading Experts Discuss This Report! Click Here To Learn More.](#)

- The downside correction continues until the public says "Just let me out".
- market overbought
- needs to consolidate
- Downtrend continues

Question #4. What advice would you give and/or what resources would you recommend to someone who is new to trading?

- Learn about seasonality, market cycles, and sentiment.
- Learn skills first, then test them, then test them again.
- go in slowly-no rush unless you are sure and nobody is sure!
- [finviz.com](#)-[investopedia.com](#)--[vixcentral.com](#)-
- be a forever student
- go with your gut
- Study price action on twitter.
- Cut losses short
- McClellan oscillator don't count on Santa
- coin flip
- Test everything thoroughly!
- Don't get too influenced by news headlines. Learn candlestick charting.
- Learn how to read charts before you trade, especial candlesticks.
- There are way too many gurus out there. Just find some indicators you like (they don't have to be unusual ones) and draw trendlines and look at support and resistance areas and keep your stops.
- Study the fundamentals first then the technicals
- Have a trading plan, always honor stops, and don't exceed a preset daily loss limit
- study charts voraciously brush up math if needed go slow paper trade like you mean it open a small account - take real trades 1 lots so if it costs you commission so what, did you get you degree for free or even if scholarship, someone paid for it no pain no gain.enjoy it or do not bother-if its torture find a business you like and do that with the same described focus and attention.. this paragraph is copyrighted please do not use it publish it.. i will find it online 'nopainnogain not included
- Stop trading

Question #5. Additional Comments/Questions/Suggestions?

Thank you for all the feedback, feel free to [contact us](#) at any time with any other questions or comments.

- Study study study and sim trade for a long long long time to get the feel . Read some of the best books on investing and trading. Turn off the TV. Learn to read price action and order flow. Key in on the market forces that move prices and measure them.
- It may take longer than you think, but don't give up.
- no
- thanks for your interest.

Recently Closed Predictions

Week 171, 01/21/18 Report - The S&P500 closed for 2017 at 2,673.61. Where do you think it will close for 2018?

The S&P500 closed at 2,506.85 for the year, 6.24% Lower for the year, so the 2nd most selected option from the survey (Lower 2-20%) ended up being correct.

- 57.8%: Higher 2-20%.
- 15.6%: Lower 2-20%. (Correct)
- 13.3%: Higher 21% or more.
- 6.7%: Unchanged. Less than 2% change Higher or Lower.
- 6.7%: Lower 21% or more.

Standing Predictions

Below are some of the one-time prediction-type questions asked in previous weeks that have not been finalized yet or have been finalized recently. Suggest a future question [here](#).

Week #264, 10/14/18 Report - Do you think the drop in the markets this week were the start of a longer downtrend or a minor correction on the way to new highs (i.e. 6 months from now do you think the S&P500 will be higher or lower than today)?

Closes: 04/19/19

- 64% - minor correction (S&P500 heading higher)
- 36% - start of a longer downtrend (S&P500 heading lower)

Week #275, 12/30/18 Report - Where do you think the S&P500 will close for 2019 (relative to where it will close for 2018)?

Closes: 12/31/19

- 40.9%: Higher 2-20%.
- 40.9%: Lower 2-20%.
- 9.1%: Lower 21% or more.
- 4.5%: Higher 21% or more.
- 4.5%: Unchanged. Less than 2% change Higher or Lower.