

[Monday, 1PM ET: Top Trading Experts Discuss This Report! Click Here To Learn More.](#)

Question #1. Which direction do you think the S&P500 index will move from this coming Monday's open to Friday's close (February 25th to March 1st)?

(The order of possible responses to this question on the survey were randomized for each viewer.)

Higher: 52.8%

Lower: 47.2%

Higher/Lower Difference: 5.6%

Question #2. Rate your confidence in your answer to Question #2 by estimating the probability you have correctly predicted next week's market move.

Average of All Responses: 64.4%

Average For "Higher" Responses: 68.7%

Average For "Lower" Responses: 59.7%

Higher/Lower Difference: 9.0%

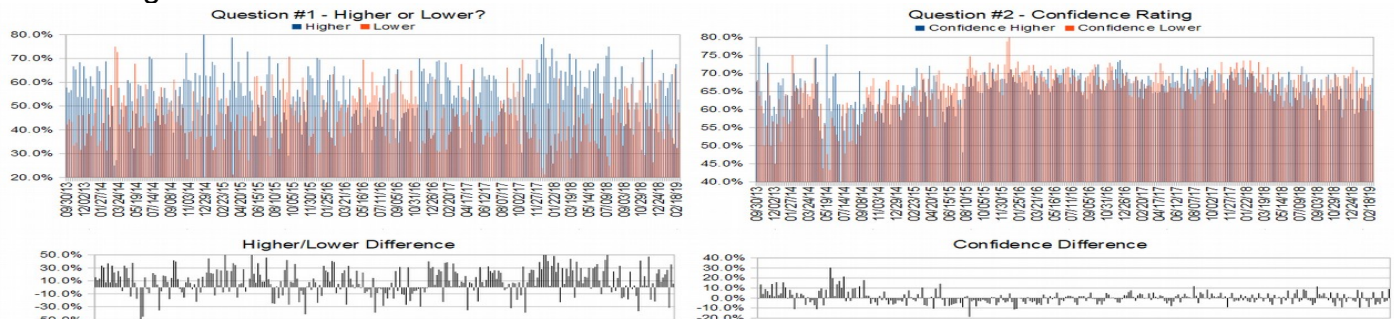
Responses Submitted This Week: 36

52-Week Average Number of Responses: 41.1

TimingResearch Crowd Forecast Prediction: 60% Chance Higher

This prediction is an attempt by the editor of this newsletter to use the full 5+ year history of data collected from this project to forecast a probability estimate for whether this week's sentiment is going to be correct and ultimately what the markets will do this coming week.

Details: Last week's majority sentiment from the survey was 67.6% Higher, and the Crowd Forecast Indicator prediction was 60% Chance Higher; the S&P500 closed 0.84% Higher for the week. This week's majority sentiment from the survey is 52.8% Higher with a greater average confidence from those who responded Lower. Similar conditions have occurred 101 times in the previous 282 weeks, with the majority sentiment being correct 60% of the time and with an average S&P500 move of 0.29% Higher for the week. Based on that history, the TimingResearch Crowd Forecast Indicator is forecasting a 60% Chance that the S&P500 is going to move Higher this coming week.



Raw Data Page (raw data files include full history spreadsheet and the above charts): TimingResearch.com/data.

TimingResearch Crowd Forecast News Report #283 (02/24/2019) - Page 2/7

[Monday, 1PM ET: Top Trading Experts Discuss This Report! Click Here To Learn More.](#)

Full Weekly Results (full version of this chart available in the [raw data](#) spreadsheet for this week, "Date" field below lists the Monday of the week being predicted).

Overall Sentiment All-Time "Correct" Percentage: 52.2%

Overall Sentiment 52-Week "Correct" Percentage: 58.8%

Overall Sentiment 12-Week "Correct" Percentage: 72.7%

Only the previous 52 weeks of data are shown below, please [download the raw data](#) to see the full range of past data.

232	03/05/18	58.5%	41.5%	17.1%	66.2%	67.5%	64.4%	3.1%	Higher	64%	Higher	Higher	Yes	1	1	50.9%	2,681.06	2,786.57	105.51	3.94%
233	03/12/18	72.0%	28.0%	44.0%	69.7%	69.7%	69.6%	0.1%	Higher	54%	Lower	Lower	No	0	0	50.7%	2,790.54	2,752.01	-38.53	-1.38%
234	03/19/18	63.2%	36.8%	26.3%	65.5%	66.0%	65.0%	1.0%	Higher	57%	Higher	Lower	No	0	0	50.4%	2,741.38	2,588.26	-153.12	-5.59%
235	03/26/18	42.0%	58.0%	-16.0%	69.1%	65.5%	71.7%	-6.2%	Lower	80%	Higher	Higher	No	0	1	50.2%	2,619.35	2,640.87	21.52	0.82%
236	04/02/18	69.8%	30.2%	39.5%	64.5%	64.8%	63.9%	1.0%	Higher	64%	Lower	Lower	No	0	0	50.0%	2,633.45	2,604.47	-28.98	-1.10%
237	04/09/18	54.7%	45.3%	9.4%	66.8%	65.7%	68.1%	-2.4%	Higher	53%	Higher	Higher	Yes	1	1	50.2%	2,617.18	2,656.30	39.12	1.49%
238	04/16/18	64.9%	35.1%	29.7%	67.2%	69.8%	62.3%	7.5%	Higher	69%	Higher	Higher	Yes	1	1	50.4%	2,670.10	2,670.14	0.04	0.00%
239	04/23/18	53.1%	46.9%	6.3%	66.7%	66.8%	66.7%	0.1%	Higher	61%	Higher	Lower	No	0	0	50.2%	2,675.40	2,669.91	-5.49	-0.21%
240	04/30/18	58.1%	41.9%	16.1%	66.9%	64.3%	70.4%	-6.1%	Higher	60%	Higher	Lower	No	0	0	50.0%	2,675.47	2,663.42	-12.05	-0.45%
241	05/07/18	57.5%	42.5%	15.0%	66.5%	68.5%	63.8%	4.7%	Higher	67%	Higher	Higher	Yes	1	1	50.2%	2,680.34	2,727.72	47.38	1.77%
242	05/14/18	65.1%	34.9%	30.2%	66.1%	69.0%	60.7%	8.3%	Higher	69%	Higher	Lower	No	0	0	50.0%	2,738.47	2,712.97	-25.50	-0.93%
243	05/21/18	48.9%	51.1%	-2.1%	64.3%	62.4%	66.0%	-3.7%	Lower	87%	Higher	Lower	Yes	1	0	50.2%	2,735.39	2,721.33	-14.06	-0.51%
244	05/28/18	64.6%	35.4%	29.2%	65.9%	64.8%	66.9%	-2.1%	Higher	54%	Higher	Higher	Yes	1	1	50.4%	2,705.11	2,734.62	29.51	1.09%
245	06/04/18	65.8%	34.2%	31.6%	67.5%	70.4%	61.9%	8.5%	Higher	58%	Higher	Higher	Yes	1	1	50.6%	2,741.67	2,779.03	37.36	1.36%
246	06/11/18	67.9%	32.1%	35.8%	65.9%	68.2%	60.9%	7.3%	Higher	62%	Higher	Lower	No	0	0	50.4%	2,780.18	2,779.42	-0.76	-0.03%
247	06/18/18	55.3%	44.7%	10.5%	67.1%	66.2%	68.2%	-2.1%	Higher	53%	Lower	Lower	No	0	0	50.2%	2,765.79	2,754.88	-10.91	-0.39%
248	06/25/18	44.7%	55.3%	-10.5%	64.7%	63.2%	66.0%	-2.7%	Lower	59%	Higher	Lower	Yes	1	0	50.4%	2,742.94	2,718.37	-24.57	-0.90%
249	07/02/18	62.5%	37.5%	25.0%	65.3%	62.8%	69.7%	-7.1%	Higher	59%	Lower	Higher	Yes	1	1	50.6%	2,704.95	2,759.82	54.87	2.03%
250	07/09/18	71.1%	28.9%	42.2%	66.1%	64.7%	69.6%	-4.9%	Higher	56%	Lower	Higher	Yes	1	1	50.8%	2,775.62	2,801.31	25.69	0.93%
251	07/16/18	75.0%	25.0%	50.0%	69.1%	72.0%	60.5%	11.5%	Higher	63%	Higher	Higher	Yes	1	1	51.0%	2,797.36	2,801.83	4.47	0.16%
252	07/23/18	51.3%	48.7%	2.6%	65.9%	67.8%	64.0%	3.8%	Higher	64%	Lower	Higher	Yes	1	1	51.2%	2,799.17	2,818.82	19.65	0.70%
253	07/30/18	46.2%	53.8%	-7.7%	68.5%	69.7%	67.4%	2.3%	Lower	64%	Higher	Higher	No	0	1	51.0%	2,819.00	2,840.35	21.35	0.76%
254	08/06/18	62.2%	37.8%	24.3%	65.8%	67.8%	62.9%	4.8%	Higher	73%	Higher	Lower	No	0	0	50.8%	2,840.29	2,833.28	-7.01	-0.25%
255	08/13/18	47.2%	52.8%	-5.6%	64.8%	65.0%	64.2%	0.8%	Lower	65%	Higher	Higher	No	0	1	50.6%	2,835.46	2,850.13	14.67	0.52%
256	08/20/18	57.1%	42.9%	14.3%	67.0%	66.0%	68.3%	-2.3%	Higher	67%	Lower	Higher	Yes	1	1	50.8%	2,853.93	2,874.69	20.76	0.73%
257	08/27/18	66.7%	33.3%	33.3%	66.8%	68.8%	63.2%	5.1%	Higher	65%	Higher	Higher	Yes	1	1	51.0%	2,884.69	2,901.52	16.83	0.58%
258	09/03/18	41.7%	58.3%	-16.7%	64.0%	61.3%	66.0%	-4.6%	Lower	58%	Higher	Lower	Yes	1	0	51.2%	2,896.96	2,871.68	-25.28	-0.87%
259	09/10/18	42.4%	57.6%	-15.2%	61.8%	57.1%	65.3%	-8.1%	Lower	68%	Higher	Higher	No	0	1	51.0%	2,881.39	2,904.98	23.59	0.82%
260	09/17/18	51.4%	48.6%	2.9%	65.9%	68.3%	63.2%	5.1%	Higher	60%	Higher	Higher	Yes	1	1	51.2%	2,903.83	2,929.67	25.84	0.89%
261	09/24/18	40.6%	59.4%	-18.8%	62.8%	61.2%	64.0%	-2.8%	Lower	57%	Higher	Lower	Yes	1	0	51.4%	2,921.83	2,913.98	-7.85	-0.27%
262	10/01/18	62.1%	37.9%	24.1%	63.3%	59.7%	69.1%	-9.4%	Higher	52%	Higher	Lower	No	0	0	51.2%	2,926.29	2,885.57	-40.72	-1.39%
263	10/08/18	48.6%	51.4%	-2.9%	67.7%	69.7%	65.8%	3.9%	Lower	66%	Higher	Lower	Yes	1	0	51.4%	2,877.53	2,767.13	-110.40	-3.84%
264	10/15/18	51.4%	48.6%	2.9%	66.4%	64.4%	68.3%	-3.9%	Higher	54%	Higher	Higher	Yes	1	1	51.5%	2,763.83	2,767.78	3.95	0.14%
265	10/22/18	43.3%	56.7%	-13.3%	65.7%	66.2%	65.3%	0.9%	Lower	64%	Higher	Lower	Yes	1	0	51.7%	2,773.94	2,658.69	-115.25	-4.15%
266	10/29/18	31.6%	68.4%	-36.8%	69.7%	70.0%	69.6%	0.4%	Lower	67%	Higher	Higher	No	0	1	51.5%	2,682.65	2,723.06	40.41	1.51%
267	11/05/18	70.6%	29.4%	41.2%	67.2%	66.5%	69.0%	-2.5%	Higher	58%	Higher	Higher	Yes	1	1	51.7%	2,726.37	2,781.01	54.64	2.00%
268	11/12/18	51.4%	48.6%	2.9%	64.8%	62.8%	66.5%	-3.7%	Higher	75%	Higher	Lower	No	0	0	51.5%	2,773.93	2,736.27	-37.66	-1.36%
269	11/19/18	58.5%	41.5%	17.1%	62.8%	65.8%	57.8%	8.0%	Higher	64%	Higher	Lower	No	0	0	51.3%	2,730.74	2,632.56	-98.18	-3.60%
270	11/26/18	51.3%	48.7%	2.6%	64.7%	60.0%	69.5%	-9.5%	Higher	69%	Higher	Higher	Yes	1	1	51.5%	2,649.97	2,760.16	110.19	4.16%
271	12/03/18	73.7%	26.3%	47.4%	67.2%	68.8%	63.0%	5.8%	Higher	58%	Higher	Lower	No	0	0	51.3%	2,790.50	2,633.08	-157.42	-5.64%
272	12/10/18	40.5%	59.5%	-19.0%	68.9%	68.5%	69.2%	-0.7%	Lower	71%	Lower	Lower	Yes	1	0	51.5%	2,630.86	2,599.95	-30.91	-1.17%
273	12/17/18	53.1%	46.9%	6.3%	68.4%	67.1%	70.0%	-2.9%	Higher	55%	Higher	Lower	No	0	0	51.3%	2,590.75	2,416.58	-174.17	-6.72%
274	12/24/18	39.0%	61.0%	-22.0%	68.3%	62.8%	71.8%	-9.0%	Lower	83%	Higher	Higher	No	0	1	51.1%	2,400.56	2,485.74	85.18	3.55%
275	12/31/18	60.7%	39.3%	21.4%	59.3%	58.8%	60.0%	-1.2%	Higher	56%	Higher	Higher	Yes	1	1	51.3%	2,498.94	2,531.94	33.00	1.32%
276	01/07/19	63.9%	36.1%	27.8%	68.8%	70.9%	65.0%	5.9%	Higher	69%	Higher	Higher	Yes	1	1	51.5%	2,535.61	2,596.26	60.65	2.39%
277	01/14/19	54.3%	45.7%	8.6%	62.3%	59.2%	65.9%	-6.7%	Higher	53%	Higher	Higher	Yes	1	1	51.6%	2,580.31	2,670.71	90.40	3.50%
278	01/21/19	57.6%	42.4%	15.2%	64.9%	63.2%	67.1%	-4.0%	Higher	52%	Lower	Higher	Yes	1	1	51.8%	2,657.88	2,664.76	6.88	0.26%
279	01/28/19	60.0%	40.0%	20.0%	65.4%	63.0%	69.0%	-6.0%	Higher	55%	Lower	Higher	Yes	1	1	52.0%	2,644.97	2,706.53	61.56	2.33%
280	02/04/19	63.4%	36.6%	26.8%	63.9%	66.4%	59.7%	6.7%	Higher	65%	Higher	Higher	Yes	1	1	52.2%	2,706.49	2,707.88	1.39	0.05%
281	02/11/19	34.1%	65.9%	-31.7%	65.0%	62.5%	66.3%	-3.8%	Lower	61%	Lower	Higher	No	0	1	52.0%	2,712.40	2,775.60	63.20	2.33%
282	02/18/19	67.6%	32.4%	35.3%	65.0%	64.1%	66.8%	-2.7%	Higher	57%	Higher	Higher	Yes	1	1	52.2%	2,769.28	2,792.67	23.39	0.84%
283	02/25/19	52.8%	47.2%	5.6%	64.4%	68.7%	59.7%	9.0%	Higher	60%	Higher	???	???	???	???	???	???	???	???	???

Weekly Reports Page: TimingResearch.com/reports

Raw Data Page: TimingResearch.com/rawdata

Current Survey Page: TimingResearch.com/currentsurvey

Any feedback: TimingResearch.com/contact

NOTE: The following open-ended answers are solely the opinions of the anonymous respondents to this survey. Responses are mostly unedited, but some have been reformatted slightly for to make them easier to read. Some irrelevant responses (e.g. "none"), or anything obviously fake, or copy and pasted responses have been omitted. All-caps responses have been changed to all lowercase. All responses for each week, unedited, are available in the raw data spreadsheets at TimingResearch.com/data.

Question #3. For your answer to Question #1, please share what specific reason(s) you think the S&P500 will be heading the direction you chose.

“Higher” Respondent Answers:

- time to go bull
- china issue will be avoided
- Follow the trend
- Momentum and the Fed kicking the can down the road
- Momentum
- because I have some puts on.
- momentum
- The market appears healthy as it nears 2800. If the China trade talks look positive, a move above 2800 is expected to hold, and continue to resistance at 2880+.
- China deal will be done which will be favorable to the S&P.
- improved momentum R2K
- Public attitude seems "at ease."
- Looks like we broke through the 200 & 50 dma and new highs may continue.

“Lower” Respondent Answers:

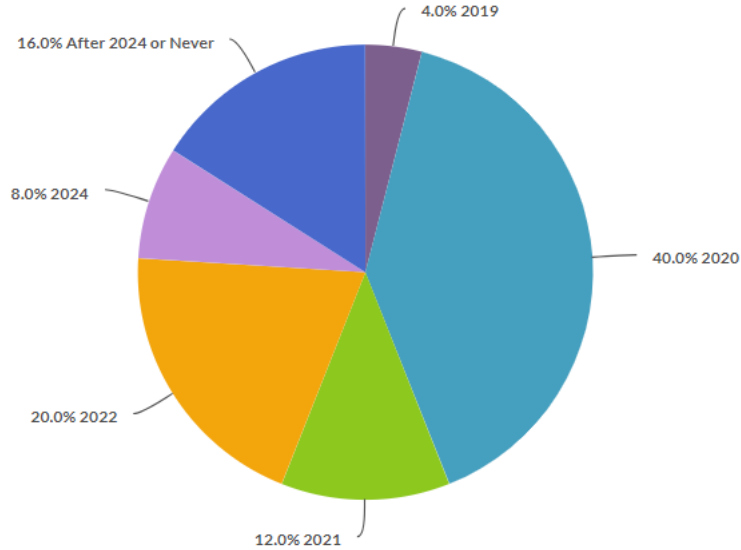
- fridays jump left a gap to fill
- pullback
- It is at a critical Resistance level
- Volatility appears to ready to break to the upside, which will most likely precipitate a drop in the S&P 500.
- Elliott wave
- Market is overbought. Lack of Chinese agreement will result in selling disappointment.
- Overbought @ resistance retest 200dma
- Market momentum slowing
- Market overbought. New employment numbers this week may disappoint due to adverse weather events. Also we are up against resistance at 200 day averages
- Back to some resistance
- Lot of news is awaited, and markets will be volatile
- This very unusual buy climax can't last forever.

Question #4. What indicator influences your trading the most?

- Trade. Oil
- Stochastics
- FED
- Price of SPY
- RSI
- MAs
- pivot points
- macd
- world events
- MACD
- I should just find one or two and stick with it!
- elliott wave
- Price activity
- Channels; Support/Resistance
- Volume
- trix
- S&P resistance and support levels, as well as resistance and support levels of individual stocks.
- Contrarian
- Moving averages Especially the 200Day and 50 Day
- Wave 2 to the upside. Next...wave 3 down
- 200 day EMA

[Monday, 1PM ET: Top Trading Experts Discuss This Report! Click Here To Learn More.](#)

BONUS: What year do you think recreational cannabis use will be federally legalized in the United States?



Value	Percent	Responses
2019	4.0%	1
2020	40.0%	10
2021	12.0%	3
2022	20.0%	5
2024	8.0%	2
After 2024 or Never	16.0%	4
Totals: 25		

Question #5. Additional Comments/Questions/Suggestions?

Thank you for all the feedback, feel free to [contact us](#) at any time with any other questions or comments.

- How about a table of who is making the best predictions.
- Unless the dumb o rats take control

Standing Predictions

Below are some of the one-time prediction-type questions asked in previous weeks that have not been finalized yet or have been finalized recently. Suggest a future question [here](#).

Week #264, 10/14/18 Report - Do you think the drop in the markets this week were the start of a longer downtrend or a minor correction on the way to new highs (i.e. 6 months from now do you think the S&P500 will be higher or lower than today)?

- 64% - minor correction (S&P500 heading higher)
- 36% - start of a longer downtrend (S&P500 heading lower)

Week 171, 01/21/18 Report - The S&P500 closed for 2017 at 2,673.61. Where do you think it will close for 2018?

- 57.8%: Higher 2-20%.
- 15.6%: Lower 2-20%.
- 13.3%: Higher 21% or more.
- 6.7%: Unchanged. Less than 2% change Higher or Lower.
- 6.7%: Lower 21% or more.