

[Monday, 1PM ET: Top Trading Experts Discuss This Report! Click Here To Learn More.](#)

**Question #1. Which direction do you think the S&P500 index will move from this coming Monday's open to Friday's close (April 29th to May 3rd)?**

*(The order of possible responses to this question on the survey were randomized for each viewer.)*

Higher: 72.2%

Lower: 27.8%

Higher/Lower Difference: 44.4%

**Question #2. Rate your confidence in your answer to Question #2 by estimating the probability you have correctly predicted next week's market move.**

Average of All Responses: 66.8%

Average For "Higher" Responses: 65.6%

Average For "Lower" Responses: 70.5%

Higher/Lower Difference: -4.9%

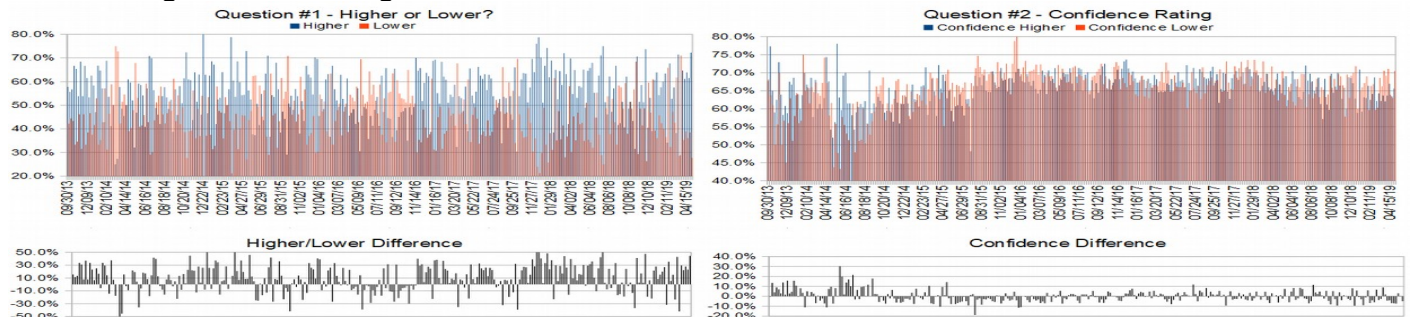
**Responses Submitted This Week: 37**

**52-Week Average Number of Responses: 39.6**

**TimingResearch Crowd Forecast Prediction: 65% Chance Higher**

*This prediction is an attempt by the editor of this newsletter to use the full 5+ year history of data collected from this project to forecast a probability estimate for whether this week's sentiment is going to be correct and ultimately what the markets will do this coming week.*

Details: Last week's majority sentiment from the survey was 61.5% Higher, and the Crowd Forecast Indicator prediction was 58% Chance Higher; the S&P500 closed 1.42% Higher for the week. This week's majority sentiment from the survey is 72.2% Higher with a greater average confidence from those who responded Higher. Similar conditions have occurred 20 times in the previous 291 weeks, with the majority sentiment (Higher) being correct 65% of the time and with an average S&P500 move of 0.09% Higher for the week. Based on that history, the TimingResearch Crowd Forecast Indicator is forecasting a 65% Chance that the S&P500 is going to move Higher this coming week.



Raw Data Page (raw data files include full history spreadsheet and the above charts):

[TimingResearch.com/data](http://TimingResearch.com/data).

# TimingResearch Crowd Forecast News Report #292 (04/28/2019) - Page 2/7

[Monday, 1PM ET: Top Trading Experts Discuss This Report! Click Here To Learn More.](#)

Full Weekly Results (full version of this chart available in the [raw data](#) spreadsheet for this week, "Date" field below lists the Monday of the week being predicted).

Overall Sentiment All-Time "Correct" Percentage: 51.6%

Overall Sentiment 52-Week "Correct" Percentage: 58.8%

Overall Sentiment 12-Week "Correct" Percentage: 36.4%

Only the previous 52 weeks of data are shown below, please [download the raw data](#) to see the full range of past data.

241	05/07/18	57.5%	42.5%	15.0%	66.5%	68.5%	63.8%	4.7%	Higher	67%	Higher	Higher	Yes	1	1	50.2%	2,680.34	2,727.72	47.38	1.77%
242	05/14/18	65.1%	34.9%	30.2%	66.1%	69.0%	60.7%	8.3%	Higher	69%	Higher	Lower	No	0	0	50.0%	2,738.47	2,712.97	-25.50	-0.93%
243	05/21/18	48.9%	51.1%	-2.1%	64.3%	62.4%	66.0%	-3.7%	Lower	87%	Higher	Lower	Yes	1	0	50.2%	2,735.39	2,721.33	-14.06	-0.51%
244	05/28/18	64.6%	35.4%	29.2%	65.9%	64.8%	66.9%	-2.1%	Higher	54%	Higher	Higher	Yes	1	1	50.4%	2,705.11	2,734.62	29.51	1.09%
245	06/04/18	65.8%	34.2%	31.6%	67.5%	70.4%	61.9%	8.5%	Higher	58%	Higher	Higher	Yes	1	1	50.6%	2,741.67	2,779.03	37.36	1.36%
246	06/11/18	67.9%	32.1%	35.8%	65.9%	68.2%	60.9%	7.3%	Higher	62%	Higher	Lower	No	0	0	50.4%	2,780.18	2,779.42	-0.76	-0.03%
247	06/18/18	55.3%	44.7%	10.5%	67.1%	66.2%	68.2%	-2.1%	Higher	53%	Lower	Lower	No	0	0	50.2%	2,765.79	2,754.88	-10.91	-0.39%
248	06/25/18	44.7%	55.3%	-10.5%	64.7%	63.2%	66.0%	-2.7%	Lower	59%	Higher	Lower	Yes	1	0	50.4%	2,742.94	2,718.37	-24.57	-0.90%
249	07/02/18	62.5%	37.5%	25.0%	65.3%	62.6%	69.7%	-7.1%	Higher	59%	Lower	Higher	Yes	1	1	50.6%	2,704.95	2,759.82	54.87	2.03%
250	07/09/18	71.1%	28.9%	42.2%	66.1%	64.7%	69.6%	-4.9%	Higher	56%	Lower	Higher	Yes	1	1	50.8%	2,775.62	2,801.31	25.69	0.93%
251	07/16/18	75.0%	25.0%	50.0%	69.1%	72.0%	60.5%	11.5%	Higher	63%	Higher	Higher	Yes	1	1	51.0%	2,797.36	2,801.83	4.47	0.16%
252	07/23/18	51.3%	48.7%	2.6%	65.9%	67.8%	64.0%	3.8%	Higher	64%	Lower	Higher	Yes	1	1	51.2%	2,799.17	2,818.82	19.65	0.70%
253	07/30/18	46.2%	53.8%	-7.7%	68.5%	69.7%	67.4%	2.3%	Lower	64%	Higher	Higher	No	0	1	51.0%	2,819.00	2,840.35	21.35	0.76%
254	08/06/18	62.2%	37.8%	24.3%	65.8%	67.6%	62.9%	4.8%	Higher	73%	Higher	Lower	No	0	0	50.8%	2,840.29	2,833.28	-7.01	-0.25%
255	08/13/18	47.2%	52.8%	-5.6%	64.6%	65.0%	64.2%	0.8%	Lower	65%	Higher	Higher	No	0	1	50.6%	2,835.46	2,850.13	14.67	0.52%
256	08/20/18	57.1%	42.9%	14.3%	67.0%	66.0%	68.3%	-2.3%	Higher	67%	Lower	Higher	Yes	1	1	50.8%	2,853.93	2,874.69	20.76	0.73%
257	08/27/18	66.7%	33.3%	33.3%	66.8%	68.6%	63.2%	5.5%	Higher	65%	Higher	Higher	Yes	1	1	51.0%	2,884.69	2,901.52	16.83	0.58%
258	09/03/18	41.7%	58.3%	-16.7%	64.0%	61.3%	66.0%	-4.6%	Lower	58%	Higher	Lower	Yes	1	0	51.2%	2,896.96	2,871.68	-25.28	-0.87%
259	09/10/18	42.4%	57.6%	-15.2%	61.8%	57.1%	65.3%	-8.1%	Lower	68%	Higher	Higher	No	0	1	51.0%	2,881.39	2,904.98	23.59	0.82%
260	09/17/18	51.4%	48.6%	2.9%	65.9%	68.3%	63.2%	5.1%	Higher	60%	Higher	Higher	Yes	1	1	51.2%	2,903.83	2,929.67	25.84	0.89%
261	09/24/18	40.6%	59.4%	-18.8%	62.8%	61.2%	64.0%	-2.8%	Lower	57%	Higher	Lower	Yes	1	0	51.4%	2,921.83	2,913.98	-7.85	-0.27%
262	10/01/18	62.1%	37.9%	24.1%	63.3%	59.7%	69.1%	-9.4%	Higher	52%	Higher	Lower	No	0	0	51.2%	2,926.29	2,885.57	-40.72	-1.39%
263	10/08/18	48.6%	51.4%	-2.9%	67.7%	69.7%	65.8%	3.9%	Lower	66%	Higher	Lower	Yes	1	0	51.4%	2,877.53	2,767.13	-110.40	-3.84%
264	10/15/18	51.4%	48.6%	2.9%	66.4%	64.4%	68.3%	-3.9%	Higher	54%	Higher	Higher	Yes	1	1	51.5%	2,763.83	2,767.78	3.95	0.14%
265	10/22/18	43.3%	56.7%	-13.3%	65.7%	66.2%	65.3%	0.9%	Lower	64%	Higher	Lower	Yes	1	0	51.7%	2,773.94	2,658.69	-115.25	-4.15%
266	10/29/18	31.6%	68.4%	-36.8%	69.7%	70.0%	69.6%	0.4%	Lower	67%	Higher	Higher	No	0	1	51.5%	2,682.65	2,723.06	40.41	1.51%
267	11/05/18	70.6%	29.4%	41.2%	67.2%	66.5%	69.0%	-2.5%	Higher	58%	Higher	Higher	Yes	1	1	51.7%	2,726.37	2,781.01	54.64	2.00%
268	11/12/18	51.4%	48.6%	2.9%	64.6%	62.8%	66.5%	-3.7%	Higher	75%	Higher	Lower	No	0	0	51.5%	2,773.93	2,736.27	-37.66	-1.36%
269	11/19/18	58.5%	41.5%	17.1%	62.9%	65.8%	57.8%	8.0%	Higher	64%	Higher	Lower	No	0	0	51.3%	2,730.74	2,632.56	-98.18	-3.60%
270	11/26/18	51.3%	48.7%	2.6%	64.7%	60.0%	69.5%	-9.5%	Higher	69%	Higher	Higher	Yes	1	1	51.5%	2,649.97	2,760.16	110.19	4.16%
271	12/03/18	73.7%	26.3%	47.4%	67.2%	68.8%	63.0%	5.8%	Higher	58%	Higher	Lower	No	0	0	51.3%	2,790.50	2,633.08	-157.42	-5.64%
272	12/10/18	40.5%	59.5%	-19.0%	68.9%	68.5%	69.2%	-0.7%	Lower	71%	Lower	Lower	Yes	1	0	51.5%	2,630.86	2,599.95	-30.91	-1.17%
273	12/17/18	53.1%	46.9%	6.3%	68.4%	67.1%	70.0%	-2.9%	Higher	55%	Higher	Lower	No	0	0	51.3%	2,590.75	2,416.58	-174.17	-6.72%
274	12/24/18	39.0%	61.0%	-22.0%	68.3%	62.8%	71.8%	-9.0%	Lower	83%	Higher	Higher	No	0	1	51.1%	2,400.56	2,485.74	85.18	3.55%
275	12/31/18	60.7%	39.3%	21.4%	59.3%	58.8%	60.0%	-1.2%	Higher	56%	Higher	Higher	Yes	1	1	51.3%	2,498.94	2,531.94	33.00	1.32%
276	01/07/19	63.9%	36.1%	27.8%	68.8%	70.9%	65.0%	5.9%	Higher	69%	Higher	Higher	Yes	1	1	51.5%	2,535.61	2,596.26	60.65	2.39%
277	01/14/19	54.3%	45.7%	8.6%	62.3%	59.2%	65.9%	-6.7%	Higher	53%	Higher	Higher	Yes	1	1	51.6%	2,580.31	2,670.71	90.40	3.50%
278	01/21/19	57.6%	42.4%	15.2%	64.9%	63.2%	67.1%	-4.0%	Higher	52%	Lower	Higher	Yes	1	1	51.8%	2,657.88	2,664.76	6.88	0.26%
279	01/28/19	60.0%	40.0%	20.0%	65.4%	63.0%	69.0%	-6.0%	Higher	55%	Lower	Higher	Yes	1	1	52.0%	2,644.97	2,706.53	61.56	2.33%
280	02/04/19	63.4%	36.6%	26.8%	63.9%	66.4%	59.7%	6.7%	Higher	65%	Higher	Higher	Yes	1	1	52.2%	2,706.49	2,707.88	1.39	0.05%
281	02/11/19	34.1%	65.9%	-31.7%	65.0%	62.5%	66.3%	-3.8%	Lower	61%	Lower	Higher	No	0	1	52.0%	2,712.40	2,775.60	63.20	2.33%
282	02/18/19	67.6%	32.4%	35.3%	65.0%	64.1%	66.8%	-2.7%	Higher	57%	Higher	Higher	Yes	1	1	52.2%	2,769.28	2,792.67	23.39	0.84%
283	02/25/19	52.8%	47.2%	5.6%	64.4%	68.7%	59.7%	9.0%	Higher	60%	Higher	Lower	No	0	0	52.0%	2,804.35	2,803.69	-0.66	-0.02%
284	03/04/19	57.5%	42.5%	15.0%	61.4%	62.2%	60.3%	1.9%	Higher	60%	Higher	Lower	No	0	0	51.8%	2,814.37	2,743.07	-71.30	-2.53%
285	03/11/19	38.2%	61.8%	-23.5%	66.9%	64.2%	68.6%	-4.3%	Lower	68%	Lower	Higher	No	0	1	51.6%	2,747.61	2,822.48	74.87	2.72%
286	03/18/19	71.4%	28.6%	42.9%	63.3%	62.2%	66.3%	-4.1%	Higher	59%	Higher	Lower	No	0	0	51.4%	2,822.61	2,800.71	-21.90	-0.78%
287	03/25/19	28.9%	71.1%	-42.1%	68.6%	63.6%	70.6%	-6.9%	Lower	63%	Higher	Higher	No	0	1	51.2%	2,796.01	2,834.40	38.39	1.37%
288	04/01/19	64.7%	35.3%	29.4%	64.6%	62.1%	69.2%	-7.1%	Higher	62%	Lower	Higher	Yes	1	1	51.4%	2,848.63	2,892.74	44.11	1.55%
289	04/08/19	61.1%	38.9%	22.2%	66.5%	63.6%	71.1%	-7.4%	Higher	57%	Lower	Higher	Yes	1	1	51.6%	2,888.46	2,907.41	18.95	0.66%
290	04/15/19	63.9%	36.1%	27.8%	65.8%	67.0%	63.9%	3.1%	Higher	59%	Higher	Lower	No	0	0	51.4%	2,908.32	2,905.03	-3.29	-0.11%
291	04/22/19	61.5%	38.5%	23.1%	63.3%	63.4%	63.0%	0.4%	Higher	58%	Higher	Higher	Yes	1	1	51.6%	2,898.78	2,939.88	41.10	1.42%
292	04/29/19	72.2%	27.8%	44.4%	66.8%	65.6%	70.5%	-4.9%	Higher	???	???	???	???	???	???	???	???	???	???	???

Weekly Reports Page: [TimingResearch.com/reports](http://TimingResearch.com/reports)

Raw Data Page: [TimingResearch.com/rawdata](http://TimingResearch.com/rawdata)

Current Survey Page: [TimingResearch.com/currentsurvey](http://TimingResearch.com/currentsurvey)

Any feedback: [TimingResearch.com/contact](http://TimingResearch.com/contact)

*NOTE: The following open-ended answers are solely the opinions of the anonymous respondents to this survey. Responses are mostly unedited, but some have been reformatted slightly for to make them easier to read. Some irrelevant responses (e.g. "none"), or anything obviously fake, or copy and pasted responses have been omitted. All-caps responses have been changed to all lowercase. All responses for each week, unedited, are available in the raw data spreadsheets at [TimingResearch.com/data](http://TimingResearch.com/data).*

**Question #3. For your answer to Question #1, please share what specific reason(s) you think the S&P500 will be heading the direction you chose.**

### **“Higher” Respondent Answers:**

- Momentum
- trend
- breakout
- Better earnings
- Banking is still reasonably OK and the China/U.S. trade deal seems to be moving forward.
- The trend is still higher
- We are in wave B. By FB retrac. wave B will be minim. 127% of wave A. That is, the SP will reach the 3100 in the short term
- Market closed at all time high
- Momentum
- Usually new highs all around hit the same week to suck in other longs before a correction. Statistically higher first week of May as well. New highs will undoubtedly bring choruses of "Sell in May doesn't work anymore" just before a drop!
- more good earnings reports
- Positive results from Earnings season
- The market has been reacting positively to recent earnings/revenue reports. The upward trend is likely to continue.
- Still best six months of year historically
- MO & Earnings
- Earnings push the S&P up a bit
- Trend up continues
- Trend continues
- earnings still to come

### “Lower” Respondent Answers:

- Selloffs in individual stocks continues
- stocks selling off individually
- Overbought
- 80% of double tops as in s/p..dow qq, usually sends them back down
- waiting to start wave 4
- The market remains overbought and needs a downside correction. More earnings reports are due this week.
- IWM nonconfirmation
- People can't continue to be irrational forever.

### Question #4. What procedures do you use to monitor and evaluate your trading results and progress over time?

- PFE, GM, MRK, MA, COP, BP, QCOM, CVS and a few others.
- technical analysis-1-yr daily chart
- broker stats
- Just the chart appearance itself, moving average crossovers, sometimes the VIX gives indication of market direction.
- Stop loss. First hour tracking. Periodic visual checkups during the day. Plus I read market related info about five to six hours a day. My goal is to keep my head in the market flow without giving in to emotional basis.
- Equity curve
- P&L
- Fibonacci distribution to help me decide when to buy & sell. Sell on way up & buy on way down
- move avg
- Net worth tracking
- watch news track stocks I read your poll results i think it shows the crowd and the crowd is wrong at market tops this is nearing a market top
- read
- Download trade info and track using python.
- Account balance monitor. Win/loss ratio
- Fundemantal
- P/L and overall account value. Critical look at trades and what happened afterwards--did I stave off more losses? Leave too much on the table? Try to be objective without beating myself up...easier said than done!
- Price & Profits
- Notebook

### Question #5. Additional Comments/Questions/Suggestions?

Thank you for all the feedback, feel free to [contact us](#) at any time with any other questions or comments.

- above
- To ALL new traders. Trade small and trade often! Do post trade examination of every trade.
- sell gold

## Standing Predictions

Below are some of the one-time prediction-type questions asked in previous weeks that have not been finalized yet or have been finalized recently. Suggest a future question [here](#).

**Week #283, 02/24/19 Report** - What year do you think recreational cannabis use will be federally legalized in the United States?

- 4%: 2019
- 40%: 2020
- 12%: 2021
- 20%: 2022
- 0%: 2023
- 8%: 2024
- 16%: After 2024 or Never

**Week #264, 10/14/18 Report** - Do you think the drop in the markets this week were the start of a longer downtrend or a minor correction on the way to new highs (i.e. 6 months from now do you think the S&P500 will be higher or lower than today)?

- 64% - minor correction (S&P500 heading higher)
- 36% - start of a longer downtrend (S&P500 heading lower)

**Week #171, 01/21/18 Report** - The S&P500 closed for 2017 at 2,673.61. Where do you think it will close for 2018?

- 57.8%: Higher 2-20%.
- 15.6%: Lower 2-20%.
- 13.3%: Higher 21% or more.
- 6.7%: Unchanged. Less than 2% change Higher or Lower.
- 6.7%: Lower 21% or more.