

[Monday, 1PM ET: Top Trading Experts Discuss This Report! Click Here To Learn More.](#)

Question #1. Which direction do you think the S&P500 index will move from this coming Tuesday's open to Friday's close (September 3rd to 6th)?

(The order of possible responses to this question on the survey were randomized for each viewer.)

Higher: 48.5%

Lower: 51.5%

Higher/Lower Difference: -3.0%

Question #2. Rate your confidence in your answer to Question #2 by estimating the probability you have correctly predicted next week's market move.

Average of All Responses: 62.2%

Average For "Higher" Responses: 66.8%

Average For "Lower" Responses: 64.6%

Higher/Lower Difference: 2.2%

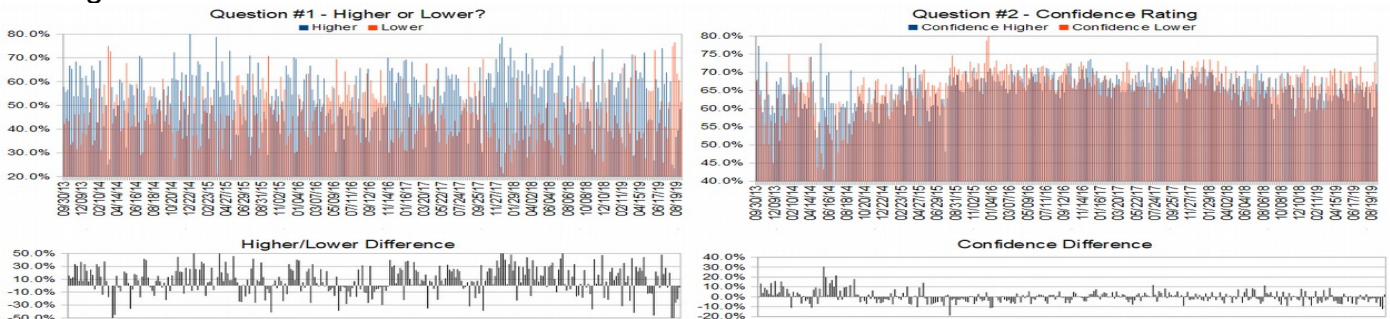
Responses Submitted This Week: 36

52-Week Average Number of Responses: 36.7

TimingResearch Crowd Forecast Prediction: 62% Chance Higher

This prediction is an attempt by the editor of this newsletter to use the full 5+ year history of data collected from this project to forecast a probability estimate for whether this week's sentiment is going to be correct and ultimately what the markets will do this coming week.

Details: Last week's majority sentiment from the survey was 60.5% Lower, and the Crowd Forecast Indicator prediction was 62% Chance Higher; the S&P500 closed 2.08% Lower for the week. This week's majority sentiment from the survey is 51.5% Lower with a greater average confidence from those who responded Higher. Similar conditions have occurred 39 times in the previous 309 weeks, with the majority sentiment (Lower) being correct only 38% of the time and with an average S&P500 move of 0.02% Lower for the week. Based on that history, the TimingResearch Crowd Forecast Indicator is forecasting a 62% Chance that the S&P500 is going to move Higher this coming week.



Raw Data Page (raw data files include full history spreadsheet and the above charts): TimingResearch.com/data.

TimingResearch Crowd Forecast News Report #310 (09/02/2019) - Page 2/6

[Monday, 1PM ET: Top Trading Experts Discuss This Report! Click Here To Learn More.](#)

Full Weekly Results (full version of this chart available in the [raw data](#) spreadsheet for this week, "Date" field below lists the Monday of the week being predicted).

Overall Sentiment All-Time "Correct" Percentage: 51.8%

Overall Sentiment 52-Week "Correct" Percentage: 54.9%

Overall Sentiment 12-Week "Correct" Percentage: 54.5%

Only the previous 52 weeks of data are shown below, please [download the raw data](#) to see the full range of past data.

259	09/10/18	42.4%	57.6%	-15.2%	61.8%	57.1%	65.3%	-8.1%	Lower	68%	Higher	Higher	No	0	1	51.0%	2,881.39	2,904.98	23.59	0.82%
260	09/17/18	51.4%	48.6%	2.9%	65.9%	68.3%	63.2%	5.1%	Higher	60%	Higher	Higher	Yes	1	1	51.2%	2,903.83	2,929.67	25.84	0.89%
261	09/24/18	40.6%	59.4%	-18.8%	62.8%	61.2%	64.0%	-2.8%	Lower	57%	Higher	Lower	Yes	1	0	51.4%	2,921.83	2,913.98	-7.85	-0.27%
262	10/01/18	62.1%	37.9%	24.1%	63.3%	59.7%	69.1%	-9.4%	Higher	52%	Higher	Lower	No	0	0	51.2%	2,926.29	2,885.57	-40.72	-1.39%
263	10/08/18	48.6%	51.4%	-2.9%	67.7%	69.7%	65.8%	3.9%	Lower	66%	Higher	Lower	Yes	1	0	51.4%	2,877.53	2,767.13	-110.40	-3.84%
264	10/15/18	51.4%	48.6%	2.9%	66.4%	64.4%	68.3%	-3.9%	Higher	54%	Higher	Higher	Yes	1	1	51.5%	2,763.83	2,767.78	3.95	0.14%
265	10/22/18	43.3%	56.7%	-13.3%	65.7%	66.2%	65.3%	0.9%	Lower	64%	Higher	Lower	Yes	1	0	51.7%	2,773.94	2,658.69	-115.25	-4.15%
266	10/29/18	31.6%	68.4%	-36.8%	69.7%	70.0%	69.6%	0.4%	Lower	67%	Higher	Higher	No	0	1	51.5%	2,682.65	2,723.06	40.41	1.51%
267	11/05/18	70.6%	29.4%	41.2%	67.2%	66.5%	69.0%	-2.5%	Higher	58%	Higher	Higher	Yes	1	1	51.7%	2,726.37	2,781.01	54.64	2.00%
268	11/12/18	51.4%	48.6%	2.9%	64.6%	62.8%	66.5%	-3.7%	Higher	75%	Higher	Lower	No	0	0	51.5%	2,773.93	2,736.27	-37.66	-1.36%
269	11/19/18	58.5%	41.5%	17.1%	62.9%	65.8%	57.8%	8.0%	Higher	64%	Higher	Lower	No	0	0	51.3%	2,730.74	2,632.56	-98.18	-3.60%
270	11/26/18	51.3%	48.7%	2.6%	64.7%	60.0%	69.5%	-9.5%	Higher	69%	Higher	Higher	Yes	1	1	51.5%	2,649.97	2,760.16	110.19	4.16%
271	12/03/18	73.7%	26.3%	47.4%	67.2%	68.8%	63.0%	5.8%	Higher	58%	Higher	Lower	No	0	0	51.3%	2,790.50	2,633.08	-157.42	-5.64%
272	12/10/18	40.5%	59.5%	-19.0%	68.9%	68.5%	69.2%	-0.7%	Lower	71%	Lower	Lower	Yes	1	0	51.5%	2,630.86	2,599.95	-30.91	-1.17%
273	12/17/18	53.1%	46.9%	6.3%	68.4%	67.1%	70.0%	-2.9%	Higher	55%	Higher	Lower	No	0	0	51.3%	2,590.75	2,416.58	-174.17	-6.72%
274	12/24/18	39.0%	61.0%	-22.0%	68.3%	62.8%	71.8%	-9.0%	Lower	83%	Higher	Higher	No	0	1	51.1%	2,400.56	2,465.74	65.18	3.55%
275	12/31/18	60.7%	39.3%	21.4%	59.3%	58.8%	60.0%	-1.2%	Higher	56%	Higher	Higher	Yes	1	1	51.3%	2,498.94	2,531.94	33.00	1.32%
276	01/07/19	63.9%	36.1%	27.8%	68.8%	70.9%	65.0%	5.9%	Higher	69%	Higher	Higher	Yes	1	1	51.5%	2,535.61	2,596.28	60.65	2.39%
277	01/14/19	54.3%	45.7%	8.6%	62.3%	59.2%	65.9%	-6.7%	Higher	53%	Higher	Higher	Yes	1	1	51.6%	2,580.31	2,670.71	90.40	3.50%
278	01/21/19	57.6%	42.4%	15.2%	64.9%	63.2%	67.1%	-4.0%	Higher	52%	Lower	Higher	Yes	1	1	51.8%	2,657.88	2,664.76	6.88	0.26%
279	01/28/19	60.0%	40.0%	20.0%	65.4%	63.0%	69.0%	-6.0%	Higher	55%	Lower	Higher	Yes	1	1	52.0%	2,644.97	2,706.53	61.56	2.33%
280	02/04/19	63.4%	36.6%	26.8%	63.9%	66.4%	59.7%	6.7%	Higher	65%	Higher	Higher	Yes	1	1	52.2%	2,706.49	2,707.88	1.39	0.05%
281	02/11/19	34.1%	65.9%	-31.7%	65.0%	62.5%	66.3%	-3.8%	Lower	61%	Lower	Higher	No	0	1	52.0%	2,712.40	2,775.60	63.20	2.33%
282	02/18/19	67.6%	32.4%	35.3%	65.0%	64.1%	66.8%	-2.7%	Higher	57%	Higher	Higher	Yes	1	1	52.2%	2,769.28	2,792.67	23.39	0.84%
283	02/25/19	52.8%	47.2%	5.6%	64.4%	68.7%	59.7%	9.0%	Higher	60%	Higher	Lower	No	0	0	52.0%	2,804.35	2,803.69	-0.66	-0.02%
284	03/04/19	57.5%	42.5%	15.0%	61.4%	62.2%	60.3%	1.9%	Higher	60%	Higher	Lower	No	0	0	51.8%	2,814.37	2,743.07	-71.30	-2.53%
285	03/11/19	38.2%	61.8%	-23.5%	66.9%	64.2%	68.6%	-4.3%	Lower	68%	Lower	Higher	No	0	1	51.6%	2,747.61	2,822.48	74.87	2.72%
286	03/18/19	71.4%	28.6%	42.9%	63.3%	62.2%	66.3%	-4.1%	Higher	59%	Higher	Lower	No	0	0	51.4%	2,822.61	2,800.71	-21.90	-0.78%
287	03/25/19	28.9%	71.1%	-42.1%	68.6%	63.6%	70.6%	-6.9%	Lower	63%	Higher	Higher	No	0	1	51.2%	2,796.01	2,834.40	38.39	1.37%
288	04/01/19	64.7%	35.3%	29.4%	64.6%	62.1%	69.2%	-7.1%	Higher	62%	Lower	Higher	Yes	1	1	51.4%	2,848.63	2,892.74	44.11	1.55%
289	04/08/19	61.1%	38.9%	22.2%	66.5%	63.6%	71.1%	-7.4%	Higher	57%	Lower	Higher	Yes	1	1	51.6%	2,888.46	2,907.41	18.95	0.66%
290	04/15/19	63.9%	36.1%	27.8%	65.8%	67.0%	63.9%	3.1%	Higher	59%	Higher	Lower	No	0	0	51.4%	2,908.32	2,905.03	-3.29	-0.11%
291	04/22/19	61.5%	38.5%	23.1%	63.3%	63.4%	63.0%	0.4%	Higher	58%	Higher	Higher	Yes	1	1	51.6%	2,898.78	2,939.88	41.10	1.42%
292	04/29/19	72.2%	27.8%	44.4%	66.8%	65.6%	70.5%	-4.9%	Higher	65%	Higher	Higher	Yes	1	1	51.7%	2,940.58	2,945.64	5.06	0.17%
293	05/06/19	57.1%	42.9%	14.3%	64.6%	65.0%	64.2%	0.8%	Higher	61%	Higher	Lower	No	0	0	51.6%	2,908.89	2,881.40	-27.49	-0.95%
294	05/13/19	43.8%	56.3%	-12.5%	66.7%	62.9%	69.7%	-6.9%	Lower	56%	Higher	Higher	No	0	1	51.4%	2,840.19	2,859.53	19.34	0.68%
295	05/20/19	44.2%	55.8%	-11.6%	66.7%	66.8%	66.7%	0.2%	Lower	58%	Higher	Lower	Yes	1	0	51.5%	2,841.94	2,826.06	-15.88	-0.56%
296	05/27/19	43.8%	56.3%	-12.5%	66.6%	62.1%	70.0%	-7.9%	Lower	57%	Higher	Lower	Yes	1	0	51.7%	2,830.03	2,752.06	-77.97	-2.76%
297	06/03/19	26.8%	73.2%	-46.3%	69.5%	67.7%	70.2%	-2.4%	Lower	73%	Higher	Higher	No	0	1	51.5%	2,751.53	2,873.34	121.81	4.43%
298	06/10/19	61.0%	39.0%	22.0%	67.4%	68.2%	66.3%	2.0%	Higher	58%	Higher	Higher	Yes	1	1	51.7%	2,885.83	2,886.98	1.15	0.04%
299	06/17/19	57.5%	42.5%	15.0%	62.9%	61.7%	64.4%	-2.7%	Higher	56%	Higher	Higher	Yes	1	1	51.9%	2,889.75	2,950.46	60.71	2.10%
300	06/24/19	48.3%	51.7%	-3.4%	67.4%	65.7%	69.0%	-3.3%	Lower	78%	Higher	Lower	Yes	1	0	52.0%	2,951.42	2,941.76	-9.66	-0.33%
301	07/01/19	74.1%	25.9%	48.1%	66.1%	66.8%	64.3%	2.5%	Higher	60%	Lower	Higher	Yes	1	1	52.2%	2,971.41	2,990.41	19.00	0.64%
302	07/08/19	59.0%	41.0%	17.9%	68.5%	66.3%	71.6%	-5.3%	Higher	57%	Higher	Higher	Yes	1	1	52.3%	2,984.25	3,013.77	29.52	0.99%
303	07/15/19	63.9%	36.1%	27.8%	66.0%	65.2%	67.3%	-2.1%	Higher	57%	Higher	Lower	No	0	0	52.2%	3,017.80	2,976.61	-41.19	-1.36%
304	07/22/19	48.6%	51.4%	-2.9%	64.0%	63.2%	64.7%	-1.5%	Lower	60%	Higher	Higher	No	0	1	52.0%	2,981.93	3,025.86	43.93	1.47%
305	07/29/19	60.0%	40.0%	20.0%	66.6%	66.0%	67.5%	-1.6%	Higher	54%	Higher	Lower	No	0	0	51.8%	3,024.47	2,932.05	-92.42	-3.06%
306	08/05/19	25.0%	75.0%	-50.0%	64.5%	60.0%	66.0%	-6.0%	Lower	67%	Higher	Higher	No	0	1	51.7%	2,898.07	2,918.65	20.58	0.71%
307	08/12/19	23.5%	76.5%	-52.9%	65.9%	64.4%	66.4%	-2.0%	Lower	68%	Higher	Lower	Yes	1	0	51.8%	2,907.07	2,888.68	-18.39	-0.63%
308	08/19/19	36.7%	63.3%	-26.7%	63.8%	57.7%	67.4%	-9.6%	Lower	65%	Higher	Lower	Yes	1	0	52.0%	2,913.48	2,847.11	-66.37	-2.28%
309	08/26/19	39.5%	60.5%	-21.1%	67.9%	60.3%	72.8%	-12.5%	Lower	62%	Higher	Higher	No	0	1	51.8%	2,866.70	2,926.46	59.76	2.08%
310	09/02/19	48.5%	51.5%	-3.0%	62.2%	66.8%	64.6%	2.2%	Lower	62%	Higher	???	???	???	???	???	???	???	???	???

Weekly Reports Page: TimingResearch.com/reports

Raw Data Page: TimingResearch.com/rawdata

Current Survey Page: TimingResearch.com/currentsurvey

Any feedback: TimingResearch.com/contact

NOTE: The following open-ended answers are solely the opinions of the anonymous respondents to this survey. Responses are mostly unedited, but some have been reformatted slightly for to make them easier to read. Some irrelevant responses (e.g. "none"), or anything obviously fake, or copy and pasted responses have been omitted. All-caps responses have been changed to all lowercase. All responses for each week, unedited, are available in the raw data spreadsheets at TimingResearch.com/data.

Question #3. For your answer to Question #1, please share what specific reason(s) you think the S&P500 will be heading the direction you chose.

“Higher” Respondent Answers:

- I answered higher because we are still in a bull move. The trend will continue til it is over. My confidence is, however, declining for I am thinking this bull is getting old and tired.
- gold, copper, transportation, XLF, FANGS, FXI, and more. 4 months and all hell will break loose
- Chart readings
- respite from trade war dialogue
- bounce
- higher lows
- Market still being pumped up
- A big sell may create a low but ultimately higher than last week
- Mkt is range bound with a move higher a probability. Trump must by now have realised his tariff tweets only damage the mkts.

“Lower” Respondent Answers:

- Seasonality and inversion yield curve.
- We're not done yet
- trade war
- downward flag pattern
- s/p-below the 50ma above 200ma-sideways -trend
- Trump's tweets about trade war
- The market is overbought again at the top of the trading range. There needs to be some back and filling.
- The market is near the top of its August box range. There's nothing I can think of to propel the market above that box at this time.
- The minute charts are very OB...
- Fear & Greed Index still showing extreme fear so investors less likely to take risks.

[Monday, 1PM ET: Top Trading Experts Discuss This Report! Click Here To Learn More.](#)

Question #4. What trading-related questions or topics would you like the experts to discuss on future episodes of the weekly Crowd Forecast News show and/or which experts would you like to see on the show who haven't been guests yet? (The show is off this coming week the market holiday, but back on September 9th.)

- What favourite tools do you use to help confirm a change in trend? How many price bars in the opposite direction do you look for til you decide the trend may be changing?
- Next market decline
- What is the best indicator for pickig tops and bottoms

[Monday, 1PM ET: Top Trading Experts Discuss This Report! Click Here To Learn More.](#)

Question #5. Additional Comments/Questions/Suggestions?

Thank you for all the feedback, feel free to [contact us](#) at any time with any other questions or comments.

- none

Standing Predictions

Below are some of the one-time prediction-type questions asked in previous weeks that have not been finalized yet or have been finalized recently. Suggest a future question [here](#).

Week #283, 02/24/19 Report - What year do you think recreational cannabis use will be federally legalized in the United States?

- 4%: 2019
- 40%: 2020
- 12%: 2021
- 20%: 2022
- 0%: 2023
- 8%: 2024
- 16%: After 2024 or Never