

[Monday, 1PM ET: Top Trading Experts Discuss This Report! Click Here To Learn More.](#)

Question #1. Which direction do you think the S&P500 index will move from this coming Monday's open to Friday's close (December 2nd to 6th)?

(The order of possible responses to this question on the survey were randomized for each viewer.)

Higher: 55.0%

Lower: 45.0%

Higher/Lower Difference: 10.0%

Question #2. Rate your confidence in your answer to Question #2 by estimating the probability you have correctly predicted next week's market move.

Average of All Responses: 65.5%

Average For "Higher" Responses: 66.5%

Average For "Lower" Responses: 64.5%

Higher/Lower Difference: 2.0%

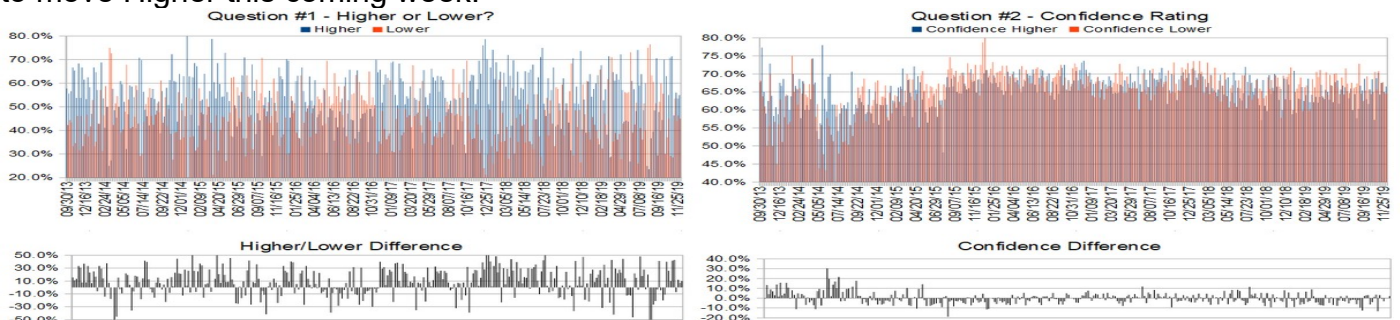
Responses Submitted This Week: 20

52-Week Average Number of Responses: 34.2

TimingResearch Crowd Forecast Prediction: 60% Chance Higher

This prediction is an attempt by the editor of this newsletter to use the full 5+ year history of data collected from this project to forecast a probability estimate for whether this week's sentiment is going to be correct and ultimately what the markets will do this coming week.

Details: Last week's majority sentiment from the survey was 53.6% Higher, and the Crowd Forecast Indicator prediction was 70% Chance Higher; the S&P500 closed 0.76% Higher for the week. This week's majority sentiment from the survey is 55.0% predicting Higher with a greater average confidence from those who are predicting Higher. Similar conditions have occurred 52 times in the previous 322 weeks, with the majority sentiment (Higher) being correct 60% of the time and with an average S&P500 move of 0.24% Higher for the week. Based on that history, the TimingResearch Crowd Forecast Indicator is forecasting a 60% Chance that the S&P500 is going to move Higher this coming week.



Raw Data Page (raw data files include full history spreadsheet and the above charts): TimingResearch.com/data.

TimingResearch Crowd Forecast News Report #322 (12/01/2019) - Page 2/7

[Monday, 1PM ET: Top Trading Experts Discuss This Report! Click Here To Learn More.](#)

Full Weekly Results (full version of this chart available in the [raw data](#) spreadsheet for this week, "Date" field below lists the Monday of the week being predicted).

Overall Sentiment All-Time "Correct" Percentage: 52.8%

Overall Sentiment 52-Week "Correct" Percentage: 60.8%

Overall Sentiment 12-Week "Correct" Percentage: 81.8%

Only the previous 52 weeks of data are shown below, please [download the raw data](#) to see the full range of past data.

272	12/10/18	40.5%	59.5%	-19.0%	68.9%	68.5%	69.2%	-0.7%	Lower	71%	Lower	Lower	Yes	1	0	51.5%	2,630.86	2,599.95	-30.91	-1.17%
273	12/17/18	53.1%	46.9%	6.3%	68.4%	67.1%	70.0%	-2.9%	Higher	55%	Higher	Lower	No	0	0	51.3%	2,590.75	2,416.58	-174.17	-6.72%
274	12/24/18	39.0%	61.0%	-22.0%	68.3%	62.8%	71.8%	-9.0%	Lower	83%	Higher	Higher	No	0	1	51.1%	2,400.56	2,485.74	85.18	3.55%
275	12/31/18	60.7%	39.3%	21.4%	59.3%	58.8%	60.0%	-1.2%	Higher	56%	Higher	Higher	Yes	1	1	51.3%	2,498.94	2,531.94	33.00	1.32%
276	01/07/19	63.9%	36.1%	27.8%	68.8%	70.9%	65.0%	5.9%	Higher	69%	Higher	Higher	Yes	1	1	51.5%	2,535.61	2,596.26	60.65	2.39%
277	01/14/19	54.3%	45.7%	8.6%	62.3%	59.2%	65.9%	-6.7%	Higher	53%	Higher	Higher	Yes	1	1	51.6%	2,580.31	2,670.71	90.40	3.50%
278	01/21/19	57.6%	42.4%	15.2%	64.9%	63.2%	67.1%	-4.0%	Higher	52%	Lower	Higher	Yes	1	1	51.8%	2,657.88	2,664.76	6.88	0.26%
279	01/28/19	60.0%	40.0%	20.0%	65.4%	63.0%	69.0%	-6.0%	Higher	55%	Lower	Higher	Yes	1	1	52.0%	2,644.97	2,706.53	61.56	2.33%
280	02/04/19	63.4%	36.6%	26.8%	63.9%	66.4%	59.7%	6.7%	Higher	65%	Higher	Higher	Yes	1	1	52.2%	2,706.49	2,707.88	1.39	0.05%
281	02/11/19	34.1%	65.9%	-31.7%	65.0%	62.5%	66.3%	-3.8%	Lower	61%	Lower	Higher	No	0	1	52.0%	2,712.40	2,775.60	63.20	2.33%
282	02/18/19	67.6%	32.4%	35.3%	65.0%	64.1%	66.8%	-2.7%	Higher	57%	Higher	Higher	Yes	1	1	52.2%	2,769.28	2,792.67	23.39	0.84%
283	02/25/19	52.8%	47.2%	5.6%	64.4%	68.7%	59.7%	9.0%	Higher	60%	Higher	Lower	No	0	0	52.0%	2,804.35	2,803.69	-0.66	-0.02%
284	03/04/19	57.5%	42.5%	15.0%	61.4%	62.2%	60.3%	1.9%	Higher	60%	Higher	Lower	No	0	0	51.8%	2,814.37	2,743.07	-71.30	-2.53%
285	03/11/19	38.2%	61.8%	-23.5%	66.9%	64.2%	68.6%	-4.3%	Lower	68%	Lower	Higher	No	0	1	51.6%	2,747.61	2,822.48	74.87	2.72%
286	03/18/19	71.4%	28.6%	42.9%	63.3%	62.2%	66.3%	-4.1%	Higher	59%	Higher	Lower	No	0	0	51.4%	2,822.61	2,800.71	-21.90	-0.78%
287	03/25/19	28.9%	71.1%	-42.1%	68.6%	63.6%	70.6%	-6.9%	Lower	63%	Higher	Higher	No	0	1	51.2%	2,796.01	2,834.40	38.39	1.37%
288	04/01/19	64.7%	35.3%	29.4%	64.6%	62.1%	69.2%	-7.1%	Higher	62%	Lower	Higher	Yes	1	1	51.4%	2,848.63	2,892.74	44.11	1.55%
289	04/08/19	61.1%	38.9%	22.2%	66.5%	63.6%	71.1%	-7.4%	Higher	57%	Lower	Higher	Yes	1	1	51.6%	2,888.46	2,907.41	18.95	0.66%
290	04/15/19	63.9%	36.1%	27.8%	65.8%	67.0%	63.9%	3.1%	Higher	59%	Higher	Lower	No	0	0	51.4%	2,908.32	2,905.03	-3.29	-0.11%
291	04/22/19	61.5%	38.5%	23.1%	63.3%	63.4%	63.0%	0.4%	Higher	58%	Higher	Higher	Yes	1	1	51.6%	2,898.78	2,939.88	41.10	1.42%
292	04/29/19	72.2%	27.8%	44.4%	66.8%	65.6%	70.5%	-4.9%	Higher	65%	Higher	Higher	Yes	1	1	51.7%	2,940.58	2,945.64	5.06	0.17%
293	05/06/19	57.1%	42.9%	14.3%	64.6%	65.0%	64.2%	0.8%	Higher	61%	Higher	Lower	No	0	0	51.6%	2,908.89	2,881.40	-27.49	-0.95%
294	05/13/19	43.8%	56.3%	-12.5%	66.7%	62.9%	69.7%	-6.9%	Lower	56%	Higher	Higher	No	0	1	51.4%	2,840.19	2,859.53	19.34	0.68%
295	05/20/19	44.2%	55.8%	-11.6%	66.7%	66.8%	66.7%	0.2%	Lower	58%	Higher	Lower	Yes	1	0	51.5%	2,841.94	2,826.06	-15.88	-0.56%
296	05/27/19	43.8%	56.3%	-12.5%	66.6%	62.1%	70.0%	-7.9%	Lower	57%	Higher	Lower	Yes	1	0	51.7%	2,830.03	2,752.06	-77.97	-2.76%
297	06/03/19	26.8%	73.2%	-46.3%	69.5%	67.7%	70.2%	-2.4%	Lower	73%	Higher	Higher	No	0	1	51.5%	2,751.53	2,873.34	121.81	4.43%
298	06/10/19	61.0%	39.0%	22.0%	67.4%	68.2%	66.3%	2.0%	Higher	58%	Higher	Higher	Yes	1	1	51.7%	2,885.83	2,886.98	1.15	0.04%
299	06/17/19	57.5%	42.5%	15.0%	62.9%	61.7%	64.4%	-2.7%	Higher	56%	Higher	Higher	Yes	1	1	51.9%	2,889.75	2,950.46	60.71	2.10%
300	06/24/19	48.3%	51.7%	-3.4%	67.4%	65.7%	69.0%	-3.3%	Lower	78%	Higher	Lower	Yes	1	0	52.0%	2,951.42	2,941.76	-9.66	-0.33%
301	07/01/19	74.1%	25.9%	48.1%	66.1%	66.8%	64.3%	2.5%	Higher	60%	Lower	Higher	Yes	1	1	52.2%	2,971.41	2,990.41	19.00	0.64%
302	07/08/19	59.0%	41.0%	17.9%	68.5%	66.3%	71.6%	-5.3%	Higher	57%	Higher	Higher	Yes	1	1	52.3%	2,984.25	3,013.77	29.52	0.99%
303	07/15/19	63.9%	36.1%	27.8%	66.0%	65.2%	67.3%	-2.1%	Higher	57%	Higher	Lower	No	0	0	52.2%	3,017.80	2,976.61	-41.19	-1.36%
304	07/22/19	48.6%	51.4%	-2.9%	64.0%	63.2%	64.7%	-1.5%	Lower	60%	Higher	Higher	No	0	1	52.0%	2,981.93	3,025.86	43.93	1.47%
305	07/29/19	60.0%	40.0%	20.0%	66.6%	66.0%	67.5%	-1.6%	Higher	54%	Higher	Lower	No	0	0	51.8%	3,024.47	2,932.05	-92.42	-3.06%
306	08/05/19	25.0%	75.0%	-50.0%	64.5%	60.0%	66.0%	-6.0%	Lower	67%	Higher	Higher	No	0	1	51.7%	2,898.07	2,918.65	20.58	0.71%
307	08/12/19	23.5%	76.5%	-52.9%	65.9%	64.4%	66.4%	-2.0%	Lower	68%	Higher	Lower	Yes	1	0	51.8%	2,907.07	2,888.68	-18.39	-0.63%
308	08/19/19	36.7%	63.3%	-26.7%	63.8%	57.7%	67.4%	-9.6%	Lower	65%	Higher	Lower	Yes	1	0	52.0%	2,913.48	2,847.11	-66.37	-2.28%
309	08/26/19	39.5%	60.5%	-21.1%	67.9%	60.3%	72.8%	-12.5%	Lower	62%	Higher	Higher	No	0	1	51.8%	2,866.70	2,926.46	59.76	2.08%
310	09/02/19	48.5%	51.5%	-3.0%	62.2%	66.8%	64.6%	2.2%	Lower	62%	Higher	Higher	No	0	1	51.6%	2,909.01	2,978.71	69.70	2.40%
311	09/09/19	70.6%	29.4%	41.2%	64.6%	65.4%	62.5%	2.9%	Higher	60%	Higher	Higher	Yes	1	1	51.8%	2,988.43	3,007.39	18.96	0.63%
312	09/16/19	47.8%	52.2%	-4.3%	67.0%	68.6%	65.4%	3.2%	Lower	55%	Higher	Lower	Yes	1	0	51.9%	2,996.41	2,992.07	-4.34	-0.14%
313	09/23/19	40.0%	60.0%	-20.0%	66.8%	63.0%	69.3%	-6.3%	Lower	72%	Higher	Lower	Yes	1	0	52.1%	2,983.50	2,961.79	-21.71	-0.73%
314	09/30/19	44.4%	55.6%	-11.1%	63.9%	61.7%	65.7%	-4.0%	Lower	55%	Higher	Lower	Yes	1	0	52.3%	2,967.07	2,952.01	-15.06	-0.51%
315	10/07/19	70.0%	30.0%	40.0%	65.3%	65.7%	64.4%	1.3%	Higher	60%	Higher	Higher	Yes	1	1	52.4%	2,944.23	2,970.27	26.04	0.88%
316	10/14/19	63.0%	37.0%	25.9%	67.2%	68.5%	65.0%	3.5%	Higher	61%	Higher	Higher	Yes	1	1	52.6%	2,965.81	2,986.20	20.39	0.69%
317	10/21/19	55.0%	45.0%	10.0%	63.3%	57.3%	70.6%	-13.3%	Higher	58%	Higher	Higher	Yes	1	1	52.7%	2,996.48	3,022.55	26.07	0.87%
318	10/28/19	70.8%	29.2%	41.7%	67.9%	68.8%	65.7%	3.1%	Higher	64%	Higher	Higher	Yes	1	1	52.9%	3,032.12	3,066.91	34.79	1.15%
319	11/04/19	71.4%	28.6%	42.9%	70.5%	70.3%	70.8%	-0.5%	Higher	59%	Higher	Higher	Yes	1	1	53.0%	3,078.96	3,093.08	14.12	0.46%
320	11/11/19	46.4%	53.6%	-7.1%	65.9%	64.3%	67.5%	-3.2%	Lower	62%	Higher	Higher	No	0	1	52.8%	3,080.33	3,120.46	40.13	1.30%
321	11/18/19	56.0%	44.0%	12.0%	67.6%	67.5%	67.7%	-0.2%	Higher	56%	Higher	Lower	No	0	0	52.7%	3,117.91	3,110.29	-7.62	-0.24%
322	11/25/19	53.6%	46.4%	7.1%	64.8%	65.0%	64.6%	0.4%	Higher	70%	Higher	Higher	Yes	1	1	52.8%	3,117.44	3,140.98	23.54	0.76%
323	12/02/19	55.0%	45.0%	10.0%	65.5%	66.5%	64.5%	2.0%	Higher	???	???	???	???	???	???	???	???	???	???	???

Weekly Reports Page: TimingResearch.com/reports

Raw Data Page: TimingResearch.com/rawdata

Current Survey Page: TimingResearch.com/currentsurvey

Any feedback: TimingResearch.com/contact

NOTE: The following open-ended answers are solely the opinions of the anonymous respondents to this survey. Responses are mostly unedited, but some have been reformatted slightly for to make them easier to read. Some irrelevant responses (e.g. "none"), or anything obviously fake, or copy and pasted responses have been omitted. All-caps responses have been changed to all lowercase. All responses for each week, unedited, are available in the raw data spreadsheets at TimingResearch.com/data.

Question #3. For your answer to Question #1, please share what specific reason(s) you think the S&P500 will be heading the direction you chose.

“Higher” Respondent Answers:

- Rally for the next three weeks !!
- trend
- The Federal Reserve mentioned a new normal' I think maybe is ok i guess maybe
- This weekend NOV 30 2019 is of course, as usual, pivotal, we must see what global factor does what, and some more concrete metrics of the Friday and Saturday shopping results, Friday evening Beijing reported rather increased productivity numbers, out of the high 49 area, now at the 54 area, of course is it real, so let's say it is, that's a positive, however other corner of mouth calls the resolution 'meddling' while millions are cordoned into the electroperimeter up in the NW as if its just fine, and we have magnificent citizens walking together in HK with their held high USA Flags, a rather amazing tribute to just how blessed we are, and held in such esteem, while our Beijing leaning candiodates promote Fidel style 'progressive_ism, a rather OxyMoronic as two photos would go together HK with flags of USA and BS EW etc calls to conduct financial vasectomies on those such as Leon Cooperman who grew up as a plain simple kid in Brooklyn and used smarts to build his multibillion company, he took the 'buffet giving pledge' many years ago and has given hundreds of millions already, and yet he and similar are decried as selfish... uh the total opposite of selfish is the thankful corporation creators that bring wonderful jobs and develop and refine the best products and services anywhere...so, in perspective, we see what next.. if we get more of same as full month, its continuation flow a go.
- Build on momentum.
- End of year tax loss selling
- Historical.
- Consumer Spending

“Lower” Respondent Answers:

- We need a retrace this wk
- end of year tax loss selling and portfolio rebalancing to continue
- 3 bar reversal
- China noise
- S&P at top of 10-month channel, as seen in early May & late July, suggesting that a decline is on tap.
- Trend has moved to sideways. China talks stall over Hong Kong.

Question #4. Who or what first inspired you to become a trader?

- money,unfortunately I didn't make any
- Money!
- Larry Williams
- to get a part time job.
- My father.
- Mom
- My dad r.i.p. had little to invest and yet found a way to do so, although he hadn't learned of other than buy and hold into the pain zones.. still I always saw the value of and experienced the tremendous success of real solid corporations that could and did bring value to all of our lives.
- Stupidity I believed all you crooked bastards and it has cost me over \$100K
- Losses
- I've always liked playing with numbers and patterns. At first, it was paper-trading.
- Dont remember
- Jim Slate
- I'm retired/something to do.
- 40 years ago when I was 14 I seen advertisement :Invest for Success", consisted of Cassettes and book. I saved my paper route money and bough it. Today I'm trading more than I was 10 or 20 years ago.

Question #5. Additional Comments/Questions/Suggestions?

Thank you for all the feedback, feel free to [contact us](#) at any time with any other questions or comments.

- Think Gold & Silver will move one way or another for sure this week!
- How about SEND US A LINK OF ALL you collect : the comments and the poll data and let us see the results and read the other comments like such as I have submitted. HOWEVER POST THEM ALL AS ANONYMOUS, I PREFER MY FULL PRIVACY, Please.

TimingResearch Response: Thanks! That's exactly what we've been doing for over 6 years with this project! Hope you enjoy the info.

Standing Predictions

Below are some of the one-time prediction-type questions asked in previous weeks that have not been finalized yet or have been finalized recently. Suggest a future question [here](#).

Week #283, 02/24/19 Report - What year do you think recreational cannabis use will be federally legalized in the United States?

- 4%: 2019
- 40%: 2020
- 12%: 2021
- 20%: 2022
- 0%: 2023
- 8%: 2024
- 16%: After 2024 or Never