

[Monday, 1PM ET: Top Trading Experts Discuss This Report! Click Here To Learn More.](#)

Question #1. Which direction do you think the S&P500 index will move from this coming Monday's open to Friday's close (January 13th to 17th)?

(The order of possible responses to this question on the survey were randomized for each viewer.)

Higher: 42.3%

Lower: 57.7%

Higher/Lower Difference: -15.4%

Question #2. Rate your confidence in your answer to Question #2 by estimating the probability you have correctly predicted next week's market move.

Average of All Responses: 69.3%

Average For "Higher" Responses: 66.8%

Average For "Lower" Responses: 70.9%

Higher/Lower Difference: -4.1%

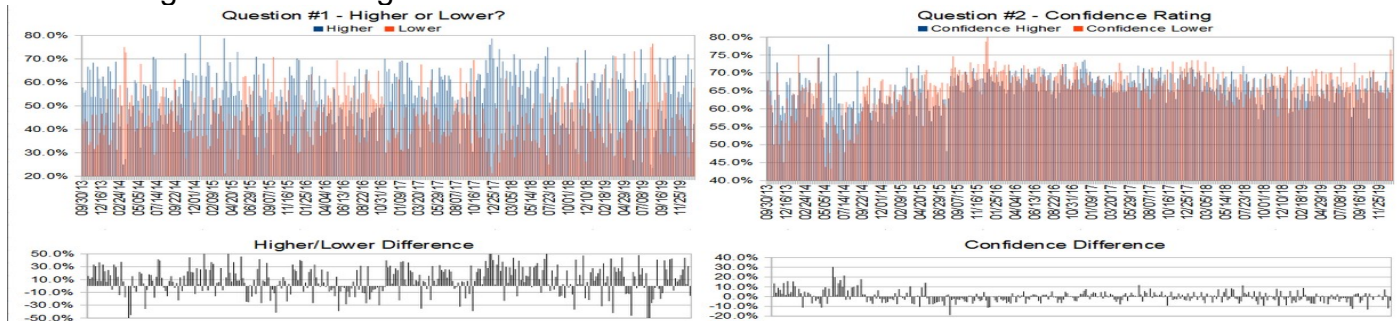
Responses Submitted This Week: 27

52-Week Average Number of Responses: 33.3

TimingResearch Crowd Forecast Prediction: 65% Chance Higher

This prediction is an attempt by the editor of this newsletter to use the full 6+ year history of data collected from this project to forecast a probability estimate for whether this week's sentiment is going to be correct and ultimately what the markets will do this coming week.

Details: Last week's majority sentiment from the survey was 65.5% predicting Higher, and the Crowd Forecast Indicator prediction was 52% chance Higher; the S&P500 closed 1.49% Higher for the week. This week's majority sentiment from the survey is 57.7% predicting Lower with a greater average confidence from those who are predicting Lower. Similar conditions have occurred 31 times in the previous 328 weeks, with the majority sentiment (Lower) being correct only 35% of the time but with an average S&P500 move of 0.47% Higher for the week. Based on that history, the TimingResearch Crowd Forecast Indicator is forecasting a 65% Chance that the S&P500 is going to move Higher this coming week.



Raw Data Page (raw data files include full history spreadsheet and the above charts): TimingResearch.com/data.

NOTE: The following open-ended answers are solely the opinions of the anonymous respondents to this survey. Responses are mostly unedited, but some have been reformatted slightly for to make them easier to read. Some irrelevant responses (e.g. "none"), or anything obviously fake, or copy and pasted responses have been omitted. All-caps responses have been changed to all lowercase. All responses for each week, unedited, are available in the raw data spreadsheets at TimingResearch.com/data.

Question #3. For your answer to Question #1, please share what specific reason(s) you think the S&P500 will be heading the direction you chose.

“Higher” Respondent Answers:

- well --- wave 5 still continues
- Seems to be general direction.
- Earnings and nobody fears the markets overseas
- Historically best six months of year
- 1/15 U.S. and China are signing the Phase I agreement.

“Lower” Respondent Answers:

- Re-bound from good week
- Index taking a rest maybe needs to go sideways for a while
- long overdue
- The S&P has been at the upper Bollinger band the most recent 2 days. Looking for a pullback to the 50 day moving avg at 3220 or below.
- Too many stocks topping out
- Profit-taking in front of earnings season.
- slowing economy
- Market reached a short term peak last thursday. Earnings likely to be weaker than expected

Question #4. What procedures do you use to monitor and evaluate your trading results and progress over time?

- Great Question.
- Notebook
- p/l
- New worth
- I keep track of which trades yield positive results and which negative. Then I can gravitate to the more successful types of trades, and avoid the others.
- Quarterly review
- watching growth of management teams

Question #5. Additional Comments/Questions/Suggestions?

Thank you for all the feedback, feel free to [contact us](#) at any time with any other questions or comments.

- none

Standing Predictions

Below are some of the one-time prediction-type questions asked in previous weeks that have not been finalized yet or have been finalized recently. Suggest a future question [here](#).

Week #283, 02/24/19 Report - What year do you think recreational cannabis use will be federally legalized in the United States?

- 4%: 2019
- 40%: 2020
- 12%: 2021
- 20%: 2022
- 0%: 2023
- 8%: 2024
- 16%: After 2024 or Never