

[Monday, 1PM ET: Top Trading Experts Discuss This Report! Click Here To Learn More.](#)

**Question #1. Which direction do you think the S&P500 index will move from this coming Monday's open to Friday's close (March 9th to 13th)?**

*(The order of possible responses to this question on the survey were randomized for each viewer.)*

Higher: 36.7%

Lower: 63.3%

Higher/Lower Difference: -26.7%

**Question #2. Rate your confidence in your answer to Question #2 by estimating the probability you have correctly predicted next week's market move.**

Average of All Responses: 72.3%

Average For "Higher" Responses: 65.5%

Average For "Lower" Responses: 76.3%

Higher/Lower Difference: -10.9%

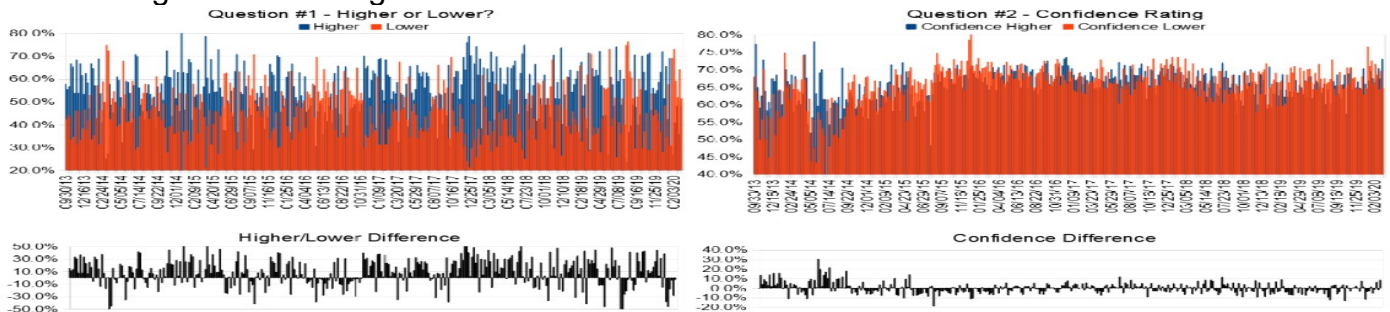
**Responses Submitted This Week:**

**52-Week Average Number of Responses:**

**TimingResearch Crowd Forecast Prediction: 55% Chance Higher**

*This prediction is an attempt by the editor of this newsletter to use the full 6+ year history of data collected from this project to forecast a probability estimate for whether this week's sentiment is going to be correct and ultimately what the markets will do this coming week.*

Details: Last week's majority sentiment from the survey was 51.6% predicting Lower, and the Crowd Forecast Indicator prediction was 69% chance Higher; the S&P500 closed 0.06% Lower for the week. This week's majority sentiment from the survey is 63.3% predicting Lower with a greater average confidence from those who are predicting Lower. Similar conditions have occurred 47 times in the previous 336 weeks, with the majority sentiment (Lower) being correct 45% of the time and with an average S&P500 move of 0.24% Higher for the week. Based on that history, the TimingResearch Crowd Forecast Indicator is forecasting a 55% Chance that the S&P500 is going to move Higher this coming week.



Raw Data Page (raw data files include full history spreadsheet and the above charts): [TimingResearch.com/data](https://TimingResearch.com/data).

# TimingResearch Crowd Forecast News Report #337 (03/08/2020) - Page 2/7

[Monday, 1PM ET: Top Trading Experts Discuss This Report! Click Here To Learn More.](#)

Full Weekly Results (full version of this chart available in the [raw data](#) spreadsheet for this week, "Date" field below lists the Monday of the week being predicted).

Overall Sentiment All-Time "Correct" Percentage: 53.3%  
 Overall Sentiment 52-Week "Correct" Percentage: 62.7%  
 Overall Sentiment 12-Week "Correct" Percentage: 54.5%

Only the previous 52 weeks of data are shown below, please [download the raw data](#) to see the full range of past data.

286	03/18/19	71.4%	28.6%	42.9%	63.3%	62.2%	66.3%	-4.1%	Higher	59%	Higher	Lower	No	0	0	51.4%	2,822.61	2,800.71	-21.90	-0.78%
287	03/25/19	28.9%	71.1%	-42.1%	68.6%	63.6%	70.6%	-6.9%	Lower	63%	Higher	Higher	No	0	1	51.2%	2,796.01	2,834.40	38.39	1.37%
288	04/01/19	64.7%	35.3%	29.4%	64.6%	62.1%	69.2%	-7.1%	Higher	62%	Lower	Higher	Yes	1	1	51.4%	2,848.63	2,892.74	44.11	1.55%
289	04/08/19	61.1%	38.9%	22.2%	66.5%	63.6%	71.1%	-7.4%	Higher	57%	Lower	Higher	Yes	1	1	51.6%	2,888.46	2,907.41	18.95	0.66%
290	04/15/19	63.9%	36.1%	27.8%	65.8%	67.0%	63.9%	3.1%	Higher	59%	Higher	Lower	No	0	0	51.4%	2,908.32	2,905.03	-3.29	-0.11%
291	04/22/19	61.5%	38.5%	23.1%	63.3%	63.4%	63.0%	0.4%	Higher	58%	Higher	Higher	Yes	1	1	51.6%	2,898.78	2,939.88	41.10	1.42%
292	04/29/19	72.2%	27.8%	44.4%	66.8%	65.6%	70.5%	-4.9%	Higher	65%	Higher	Higher	Yes	1	1	51.7%	2,940.58	2,945.64	5.06	0.17%
293	05/06/19	57.1%	42.9%	14.3%	64.6%	65.0%	64.2%	0.8%	Higher	61%	Higher	Lower	No	0	0	51.6%	2,908.89	2,881.40	-27.49	-0.95%
294	05/13/19	43.8%	56.3%	-12.5%	66.7%	62.9%	69.7%	-6.9%	Lower	56%	Higher	Higher	No	0	1	51.4%	2,840.19	2,859.53	19.34	0.68%
295	05/20/19	44.2%	55.8%	-11.6%	66.7%	66.8%	66.7%	0.2%	Lower	58%	Higher	Lower	Yes	1	0	51.5%	2,841.94	2,826.06	-15.88	-0.56%
296	05/27/19	43.8%	56.3%	-12.5%	66.6%	62.1%	70.0%	-7.9%	Lower	57%	Higher	Lower	Yes	1	0	51.7%	2,830.03	2,752.06	-77.97	-2.76%
297	06/03/19	26.8%	73.2%	-46.3%	69.5%	67.7%	70.2%	-2.4%	Lower	73%	Higher	Higher	No	0	1	51.5%	2,751.53	2,873.34	121.81	4.43%
298	06/10/19	61.0%	39.0%	22.0%	67.4%	68.2%	66.3%	2.0%	Higher	58%	Higher	Higher	Yes	1	1	51.7%	2,885.83	2,886.98	1.15	0.04%
299	06/17/19	57.5%	42.5%	15.0%	62.9%	61.7%	64.4%	-2.7%	Higher	56%	Higher	Higher	Yes	1	1	51.9%	2,889.75	2,950.46	60.71	2.10%
300	06/24/19	48.3%	51.7%	-3.4%	67.4%	65.7%	69.0%	-3.3%	Lower	78%	Higher	Lower	Yes	1	0	52.0%	2,951.42	2,941.76	-9.66	-0.33%
301	07/01/19	74.1%	25.9%	48.1%	66.1%	66.8%	64.3%	2.5%	Higher	60%	Lower	Higher	Yes	1	1	52.2%	2,971.41	2,990.41	19.00	0.64%
302	07/08/19	59.0%	41.0%	17.9%	68.5%	66.3%	71.6%	-5.3%	Higher	57%	Higher	Higher	Yes	1	1	52.3%	2,984.25	3,013.77	29.52	0.99%
303	07/15/19	63.9%	36.1%	27.8%	66.0%	65.2%	67.3%	-2.1%	Higher	57%	Higher	Lower	No	0	0	52.2%	3,017.80	2,976.61	-41.19	-1.36%
304	07/22/19	48.6%	51.4%	-2.9%	64.0%	63.2%	64.7%	-1.5%	Lower	60%	Higher	Higher	No	0	1	52.0%	2,981.93	3,025.86	43.93	1.47%
305	07/29/19	60.0%	40.0%	20.0%	66.6%	66.0%	67.5%	-1.6%	Higher	54%	Higher	Lower	No	0	0	51.8%	3,024.47	2,932.05	-92.42	-3.06%
306	08/05/19	25.0%	75.0%	-50.0%	64.5%	60.0%	60.0%	-6.0%	Lower	67%	Higher	Higher	No	0	1	51.7%	2,898.07	2,918.65	20.58	0.71%
307	08/12/19	23.5%	76.5%	-52.9%	65.9%	64.4%	66.4%	-2.0%	Lower	68%	Higher	Lower	Yes	1	0	51.8%	2,907.07	2,888.68	-18.39	-0.63%
308	08/19/19	36.7%	63.3%	-26.7%	63.8%	57.7%	67.4%	-9.6%	Lower	65%	Higher	Lower	Yes	1	0	52.0%	2,913.48	2,847.11	-66.37	-2.28%
309	08/26/19	39.5%	60.5%	-21.1%	67.9%	60.3%	72.8%	-12.5%	Lower	62%	Higher	Higher	No	0	1	51.8%	2,866.70	2,926.46	59.76	2.08%
310	09/02/19	48.5%	51.5%	-3.0%	62.2%	66.8%	64.6%	2.2%	Lower	62%	Higher	Higher	No	0	1	51.6%	2,909.01	2,978.71	69.70	2.40%
311	09/09/19	70.6%	29.4%	41.2%	64.6%	65.4%	62.5%	2.9%	Higher	60%	Higher	Higher	Yes	1	1	51.8%	2,988.43	3,007.39	18.96	0.63%
312	09/16/19	47.8%	52.2%	-4.3%	67.0%	68.6%	65.4%	3.2%	Lower	55%	Higher	Lower	Yes	1	0	51.9%	2,996.41	2,992.07	-4.34	-0.14%
313	09/23/19	40.0%	60.0%	-20.0%	66.8%	63.0%	69.3%	-6.3%	Lower	72%	Higher	Lower	Yes	1	0	52.1%	2,983.50	2,961.79	-21.71	-0.73%
314	09/30/19	44.4%	55.6%	-11.1%	63.9%	61.7%	65.7%	-4.0%	Lower	55%	Higher	Lower	Yes	1	0	52.3%	2,967.07	2,952.01	-15.06	-0.51%
315	10/07/19	70.0%	30.0%	40.0%	65.3%	65.7%	64.4%	1.3%	Higher	60%	Higher	Higher	Yes	1	1	52.4%	2,944.23	2,970.27	26.04	0.88%
316	10/14/19	63.0%	37.0%	25.9%	67.2%	68.5%	65.0%	3.5%	Higher	61%	Higher	Higher	Yes	1	1	52.6%	2,965.81	2,986.20	20.39	0.69%
317	10/21/19	55.0%	45.0%	10.0%	63.3%	57.3%	70.6%	-13.3%	Higher	58%	Higher	Higher	Yes	1	1	52.7%	2,996.48	3,022.55	26.07	0.87%
318	10/28/19	70.8%	29.2%	41.7%	67.9%	68.8%	65.7%	3.1%	Higher	64%	Higher	Higher	Yes	1	1	52.9%	3,032.12	3,066.91	34.79	1.15%
319	11/04/19	71.4%	28.6%	42.9%	70.5%	70.3%	70.8%	-0.5%	Higher	59%	Higher	Higher	Yes	1	1	53.0%	3,078.96	3,093.08	14.12	0.46%
320	11/11/19	46.4%	53.6%	-7.1%	65.9%	64.3%	67.5%	-3.2%	Lower	62%	Higher	Higher	No	0	1	52.8%	3,080.33	3,120.46	40.13	1.30%
321	11/18/19	56.0%	44.0%	12.0%	67.6%	67.7%	67.5%	-0.2%	Higher	56%	Higher	Lower	No	0	0	52.7%	3,117.91	3,110.29	-7.62	-0.24%
322	11/25/19	53.6%	46.4%	7.1%	64.8%	65.0%	64.6%	0.4%	Higher	70%	Higher	Higher	Yes	1	1	52.8%	3,117.44	3,140.98	23.54	0.76%
323	12/02/19	55.0%	45.0%	10.0%	65.5%	66.5%	64.5%	2.0%	Higher	60%	Higher	Higher	Yes	1	1	53.0%	3,143.85	3,145.91	2.06	0.07%
324	12/09/19	58.6%	41.4%	17.2%	64.7%	64.7%	64.6%	0.1%	Higher	60%	Higher	Higher	Yes	1	1	53.1%	3,141.86	3,168.80	26.94	0.86%
325	12/16/19	63.0%	37.0%	25.9%	65.7%	64.4%	68.0%	-3.6%	Higher	54%	Higher	Higher	Yes	1	1	53.3%	3,183.63	3,221.22	37.59	1.18%
326	12/23/19	72.0%	28.0%	44.0%	68.2%	70.3%	62.9%	7.4%	Higher	62%	Higher	Higher	Yes	1	1	53.4%	3,226.05	3,240.02	13.97	0.43%
327	12/30/19	51.5%	48.5%	3.0%	65.3%	65.9%	64.7%	1.2%	Higher	64%	Higher	Lower	No	0	0	53.3%	3,240.09	3,234.85	-5.24	-0.16%
328	01/06/20	65.5%	34.5%	31.0%	68.6%	64.5%	76.5%	-12.0%	Higher	52%	Higher	Higher	Yes	1	1	53.4%	3,217.55	3,265.35	47.80	1.49%
329	01/13/20	42.3%	57.7%	-15.4%	69.3%	66.8%	70.9%	-4.1%	Lower	65%	Higher	Higher	No	0	1	53.2%	3,271.13	3,329.62	58.49	1.79%
330	01/20/20	69.2%	30.8%	38.5%	70.5%	69.6%	72.5%	-2.9%	Higher	59%	Higher	Lower	No	0	0	53.1%	3,321.03	3,295.47	-25.56	-0.77%
331	01/27/20	30.8%	69.2%	-38.5%	66.5%	67.5%	66.1%	1.4%	Lower	77%	Higher	Lower	Yes	1	0	53.2%	3,247.16	3,225.52	-21.64	-0.67%
332	02/03/20	26.9%	73.1%	-46.2%	70.0%	66.3%	71.7%	-5.4%	Lower	65%	Higher	Higher	No	0	1	53.0%	3,235.66	3,327.71	92.05	2.84%
333	02/10/20	40.9%	59.1%	-18.2%	68.1%	67.2%	68.7%	-1.5%	Lower	58%	Higher	Higher	No	0	1	52.9%	3,318.28	3,380.16	61.88	1.86%
334	02/17/20	48.0%	52.0%	-4.0%	67.2%	70.4%	64.2%	6.2%	Lower	60%	Higher	Lower	Yes	1	0	53.0%	3,369.04	3,337.75	-31.29	-0.93%
335	02/24/20	35.7%	64.3%	-28.6%	68.9%	67.5%	69.7%	-2.2%	Lower	59%	Higher	Lower	Yes	1	0	53.2%	3,257.61	2,954.22	-303.39	-9.31%
336	03/02/20	48.4%	51.6%	-3.2%	68.7%	73.0%	64.7%	8.3%	Lower	69%	Lower	Lower	Yes	1	0	53.3%	2,974.28	2,972.37	-1.91	-0.06%
337	03/09/20	###	-100.0%					0.0%	Lower	???	???	???	???	???	???	???	???	???	???	???

Weekly Reports Page: [TimingResearch.com/reports](https://TimingResearch.com/reports)

Raw Data Page: [TimingResearch.com/rawdata](https://TimingResearch.com/rawdata)

Current Survey Page: [TimingResearch.com/currentsurvey](https://TimingResearch.com/currentsurvey)

Any feedback: [TimingResearch.com/contact](https://TimingResearch.com/contact)

*NOTE: The following open-ended answers are solely the opinions of the anonymous respondents to this survey. Responses are mostly unedited, but some have been reformatted slightly for to make them easier to read. Some irrelevant responses (e.g. "none"), or anything obviously fake, or copy and pasted responses have been omitted. All-caps responses have been changed to all lowercase. All responses for each week, unedited, are available in the raw data spreadsheets at [TimingResearch.com/data](https://TimingResearch.com/data).*

**Question #3. For your answer to Question #1, please share what specific reason(s) you think the S&P500 will be heading the direction you chose.**

### **“Higher” Respondent Answers:**

- fears ease
- Friday last hour into close
- Fridays close
- ready for a small bounce then down further.
- Market appears to have retested the bottom this Friday (March 06, 2020) and recovered into closing. I believe the recent market correction was initiated due to the Corona-virus (Covid-19) becoming a global pandemic.
- The s&p can only go so low before a bounce back. Only an opinion...

### **“Lower” Respondent Answers:**

- China flue & loss of containment in Europe
- greetings from Coronavirus - impacting industry supply-chains, travel, airlines und many more ...
- The fool US president, corona virus, and drain on consumer buying power resulting form excess concentration of wealth in too few hands.
- an increase in infections and deaths going to take the mkts lower
- In daily vision it's poised for an upside, but if you look at a weekly chart it's not poised for a weekly bounce. My 70% chance it's because statistically it could bounce after having a retest of the lows, however the Corona Virus pandemic it's still a risk and it's not going away soon.
- While I was a little surprised with some of the upswings after the hudge down days, I am not yet convinced that the selling pacic of the corona virus is over. For this reason I voted down for the week but with a low conviction as we watch this new threat progress. Not to make light of this situation but I plan to stay calm and use this time as a buying oppertunity.
- Downward trend
- Last weel performance
- broke major trend line
- production slow down china, corona virus global,
- The Fed lowering rates did not cause a rally, so what will? COVID-19 will continue to spread, with travel & crowd gatherings curtailed more; supply chains in trouble. Economies

[Monday, 1PM ET: Top Trading Experts Discuss This Report! Click Here To Learn More.](#)

---

to be hurt for an extended time.

- Virus fear
- covid is out of control
- collapse in oil prices
- corona
- The news is bad

### Question #4. What sort of hedging or portfolio protection strategies do you implement in your trading?

- Great question! Something i must work on.
- puts
- buying put spreads
- selling premium
- stops
- I only do speculative trading, however just buying gold or implementing covered calls should be enough.
- We will sometime place a collar on a long term position. I will also trade an underlying that is non-correlated to my open positions and finally we do use inverse TFs from time to time.
- 0
- Buying puts.
- puts
- puts
- gold
- 0
- Sell cash covered puts with low delta rather than buy stock
- emini's bought and sold.
- I use Collar as a hedging strategy.
- go to cash
- option
- SPX puts
- Try to do a few points and sell after a 2% loss.
- None

### Question #5. Additional Comments/Questions/Suggestions?

Thank you for all the feedback, feel free to [contact us](#) at any time with any other questions or comments.

- Italy has a mortality rate of 26% of those severely infected. Since Italy is an 1st world country, how can China's numbers be correct, given the fact it hit there 1st and China living conditions are inadequate compared to Italy? This is far worse than shown! Within two months i believe they'll be growing issues on every continent.
- Nobody I mean nobody can predict the stock market....only the cheaters.

## Standing Predictions

Below are some of the one-time prediction-type questions asked in previous weeks that have not been finalized yet or have been finalized recently. Suggest a future question [here](#).

**Week #283, 02/24/19 Report** - What year do you think recreational cannabis use will be federally legalized in the United States?

- 4%: 2019
- 40%: 2020
- 12%: 2021
- 20%: 2022
- 0%: 2023
- 8%: 2024
- 16%: After 2024 or Never