

[Monday, 1PM ET: Top Trading Experts Discuss This Report! Click Here To Learn More.](#)

**Question #1. Which direction do you think the S&P500 index will move from this coming Monday's open to Friday's close (March 23rd to 27th)?**

*(The order of possible responses to this question on the survey were randomized for each viewer.)*

Higher: 32.4%

Lower: 67.6%

Higher/Lower Difference: -35.3%

**Question #2. Rate your confidence in your answer to Question #2 by estimating the probability you have correctly predicted next week's market move.**

Average of All Responses: 72.4%

Average For "Higher" Responses: 66.8%

Average For "Lower" Responses: 75.0%

Higher/Lower Difference: -8.2%

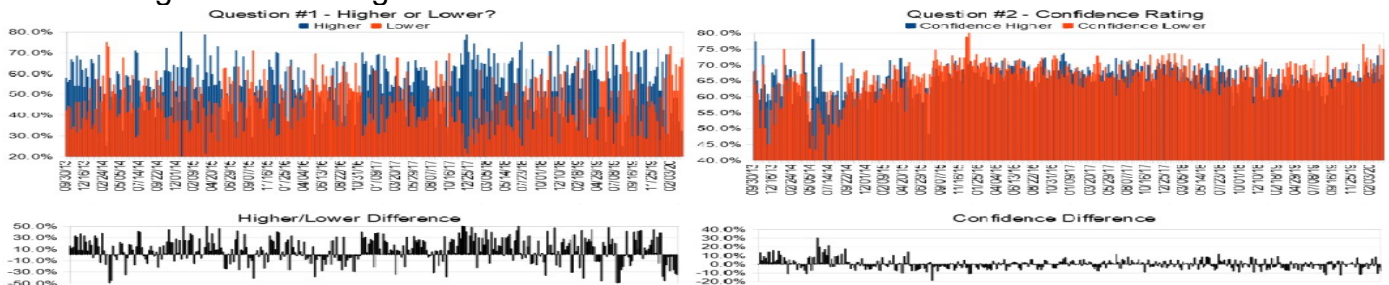
**Responses Submitted This Week: 36**

**52-Week Average Number of Responses: 32.0**

**TimingResearch Crowd Forecast Prediction: 53% Chance Higher**

*This prediction is an attempt by the editor of this newsletter to use the full 6+ year history of data collected from this project to forecast a probability estimate for whether this week's sentiment is going to be correct and ultimately what the markets will do this coming week.*

Details: Last week's majority sentiment from the survey was 66.7% predicting Lower, and the Crowd Forecast Indicator prediction was 54% chance Higher; the S&P500 closed 8.12% Lower for the week. This week's majority sentiment from the survey is 67.6% predicting Lower with a greater average confidence from those who are predicting Lower. Similar conditions have occurred 49 times in the previous 338 weeks, with the majority sentiment (Lower) being correct 47% of the time and with an average S&P500 move of 0.04% Lower for the week. Based on that history, the TimingResearch Crowd Forecast Indicator is forecasting a 53% Chance that the S&P500 is going to move Higher this coming week.



Raw Data Page (raw data files include full history spreadsheet and the above charts): [TimingResearch.com/data](http://TimingResearch.com/data).

# TimingResearch Crowd Forecast News Report #339 (03/22/2020) - Page 2/7

[Monday, 1PM ET: Top Trading Experts Discuss This Report! Click Here To Learn More.](#)

**Full Weekly Results** (full version of this chart available in the [raw data](#) spreadsheet for this week, "Date" field below lists the Monday of the week being predicted).

**Overall Sentiment All-Time "Correct" Percentage: 53.6%**  
**Overall Sentiment 52-Week "Correct" Percentage: 66.7%**  
**Overall Sentiment 12-Week "Correct" Percentage: 63.6%**

Only the previous 52 weeks of data are shown below, please [download the raw data](#) to see the full range of past data.

288	04/01/19	64.7%	35.3%	29.4%	64.6%	62.1%	69.2%	-7.1%	Higher	62%	Lower	Higher	Yes	1	1	51.4%	2,848.63	2,892.74	44.11	1.55%
289	04/08/19	61.1%	38.9%	22.2%	66.5%	63.6%	71.1%	-7.4%	Higher	57%	Lower	Higher	Yes	1	1	51.6%	2,888.46	2,907.41	18.95	0.66%
290	04/15/19	63.9%	36.1%	27.8%	65.8%	67.0%	63.9%	3.1%	Higher	59%	Higher	Lower	No	0	0	51.4%	2,908.32	2,905.03	-3.29	-0.11%
291	04/22/19	61.5%	38.5%	23.1%	63.3%	63.4%	63.0%	0.4%	Higher	58%	Higher	Higher	Yes	1	1	51.6%	2,898.78	2,939.88	41.10	1.42%
292	04/29/19	72.2%	27.8%	44.4%	66.8%	65.6%	70.5%	-4.9%	Higher	65%	Higher	Higher	Yes	1	1	51.7%	2,940.58	2,945.64	5.06	0.17%
293	05/06/19	57.1%	42.9%	14.3%	64.6%	65.0%	64.2%	0.8%	Higher	61%	Higher	Lower	No	0	0	51.6%	2,908.89	2,881.40	-27.49	-0.95%
294	05/13/19	43.8%	56.3%	-12.5%	66.7%	62.9%	69.7%	-6.9%	Lower	56%	Higher	Higher	No	0	1	51.4%	2,840.19	2,859.53	19.34	0.68%
295	05/20/19	44.2%	55.8%	-11.6%	66.7%	66.8%	66.7%	0.2%	Lower	58%	Higher	Lower	Yes	1	0	51.5%	2,841.94	2,826.06	-15.88	-0.56%
296	05/27/19	43.8%	56.3%	-12.5%	66.6%	62.1%	70.0%	-7.9%	Lower	57%	Higher	Lower	Yes	1	0	51.7%	2,830.03	2,752.06	-77.97	-2.76%
297	06/03/19	26.8%	73.2%	-46.3%	69.5%	67.7%	70.2%	-2.4%	Lower	73%	Higher	Higher	No	0	1	51.5%	2,751.53	2,873.34	121.81	4.43%
298	06/10/19	61.0%	39.0%	22.0%	67.4%	68.2%	66.3%	2.0%	Higher	58%	Higher	Higher	Yes	1	1	51.7%	2,885.83	2,886.98	1.15	0.04%
299	06/17/19	57.5%	42.5%	15.0%	62.9%	61.7%	64.4%	-2.7%	Higher	56%	Higher	Higher	Yes	1	1	51.9%	2,889.75	2,950.46	60.71	2.10%
300	06/24/19	48.3%	51.7%	-3.4%	67.4%	65.7%	69.0%	-3.3%	Lower	78%	Higher	Lower	Yes	1	0	52.0%	2,951.42	2,941.76	-9.66	-0.33%
301	07/01/19	74.1%	25.9%	48.1%	66.1%	66.8%	64.3%	2.5%	Higher	60%	Lower	Higher	Yes	1	1	52.2%	2,971.41	2,990.41	19.00	0.64%
302	07/08/19	59.0%	41.0%	17.9%	68.5%	66.3%	71.6%	-5.3%	Higher	57%	Higher	Higher	Yes	1	1	52.3%	2,984.25	3,013.77	29.52	0.99%
303	07/15/19	63.9%	36.1%	27.8%	66.0%	65.2%	67.3%	-2.1%	Higher	57%	Higher	Lower	No	0	0	52.2%	3,017.80	2,976.61	-41.19	-1.36%
304	07/22/19	48.6%	51.4%	-2.9%	64.0%	63.2%	64.7%	-1.5%	Lower	60%	Higher	Higher	No	0	1	52.0%	2,981.93	3,025.86	43.93	1.47%
305	07/29/19	60.0%	40.0%	20.0%	66.6%	66.0%	67.5%	-1.6%	Higher	54%	Higher	Lower	No	0	0	51.8%	3,024.47	2,932.05	-92.42	-3.06%
306	08/05/19	25.0%	75.0%	-50.0%	64.5%	60.0%	66.0%	-6.0%	Lower	67%	Higher	Higher	No	0	1	51.7%	2,898.07	2,918.65	20.58	0.71%
307	08/12/19	23.5%	76.5%	-52.9%	65.9%	64.4%	66.4%	-2.0%	Lower	68%	Higher	Lower	Yes	1	0	51.8%	2,907.07	2,888.68	-18.39	-0.63%
308	08/19/19	36.7%	63.3%	-26.7%	63.8%	57.7%	67.4%	-9.6%	Lower	65%	Higher	Lower	Yes	1	0	52.0%	2,913.48	2,847.11	-66.37	-2.28%
309	08/26/19	39.5%	60.5%	-21.1%	67.9%	60.3%	72.8%	-12.5%	Lower	62%	Higher	Higher	No	0	1	51.8%	2,866.70	2,926.46	59.76	2.08%
310	09/02/19	48.5%	51.5%	-3.0%	62.2%	66.8%	64.6%	2.2%	Lower	62%	Higher	Higher	No	0	1	51.6%	2,909.01	2,978.71	69.70	2.40%
311	09/09/19	70.6%	29.4%	41.2%	64.6%	65.4%	62.5%	2.9%	Higher	60%	Higher	Higher	Yes	1	1	51.8%	2,988.43	3,007.39	18.96	0.63%
312	09/16/19	47.8%	52.2%	-4.3%	67.0%	68.6%	65.4%	3.2%	Lower	55%	Higher	Lower	Yes	1	0	51.9%	2,996.41	2,992.07	-4.34	-0.14%
313	09/23/19	40.0%	60.0%	-20.0%	66.8%	63.0%	69.3%	-6.3%	Lower	72%	Higher	Lower	Yes	1	0	52.1%	2,983.50	2,961.79	-21.71	-0.73%
314	09/30/19	44.4%	55.6%	-11.1%	63.9%	61.7%	65.7%	-4.0%	Lower	55%	Higher	Lower	Yes	1	0	52.3%	2,967.07	2,952.01	-15.06	-0.51%
315	10/07/19	70.0%	30.0%	40.0%	65.3%	65.7%	64.4%	1.3%	Higher	60%	Higher	Higher	Yes	1	1	52.4%	2,944.23	2,970.27	26.04	0.88%
316	10/14/19	63.0%	37.0%	25.9%	67.2%	68.5%	65.0%	3.5%	Higher	61%	Higher	Higher	Yes	1	1	52.6%	2,965.81	2,986.20	20.39	0.69%
317	10/21/19	55.0%	45.0%	10.0%	63.3%	57.3%	70.6%	-13.3%	Higher	58%	Higher	Higher	Yes	1	1	52.7%	2,996.48	3,022.55	26.07	0.87%
318	10/28/19	70.8%	29.2%	41.7%	67.9%	68.8%	65.7%	3.1%	Higher	64%	Higher	Higher	Yes	1	1	52.9%	3,032.12	3,066.91	34.79	1.15%
319	11/04/19	71.4%	28.6%	42.9%	70.5%	70.3%	70.8%	-0.5%	Higher	59%	Higher	Higher	Yes	1	1	53.0%	3,078.96	3,093.08	14.12	0.46%
320	11/11/19	46.4%	53.6%	-7.1%	65.9%	64.3%	67.5%	-3.2%	Lower	62%	Higher	Higher	No	0	1	52.8%	3,080.33	3,120.46	40.13	1.30%
321	11/18/19	56.0%	44.0%	12.0%	67.6%	67.5%	67.7%	-0.2%	Higher	58%	Higher	Lower	No	0	0	52.7%	3,117.91	3,110.29	-7.62	-0.24%
322	11/25/19	53.6%	46.4%	7.1%	64.8%	65.0%	64.6%	0.4%	Higher	70%	Higher	Higher	Yes	1	1	52.8%	3,117.44	3,140.98	23.54	0.76%
323	12/02/19	55.0%	45.0%	10.0%	65.5%	66.5%	64.5%	2.0%	Higher	60%	Higher	Higher	Yes	1	1	53.0%	3,143.85	3,145.91	2.06	0.07%
324	12/09/19	58.6%	41.4%	17.2%	64.7%	64.7%	64.6%	0.1%	Higher	60%	Higher	Higher	Yes	1	1	53.1%	3,141.86	3,168.80	26.94	0.86%
325	12/16/19	63.0%	37.0%	25.9%	65.7%	64.4%	68.0%	-3.6%	Higher	54%	Higher	Higher	Yes	1	1	53.3%	3,183.63	3,221.22	37.59	1.18%
326	12/23/19	72.0%	28.0%	44.0%	68.2%	70.3%	62.9%	7.4%	Higher	62%	Higher	Higher	Yes	1	1	53.4%	3,226.05	3,240.02	13.97	0.43%
327	12/30/19	51.5%	48.5%	3.0%	65.3%	65.9%	64.7%	1.2%	Higher	64%	Higher	Lower	No	0	0	53.3%	3,240.09	3,234.85	-5.24	-0.16%
328	01/06/20	65.5%	34.5%	31.0%	68.6%	64.5%	76.5%	-12.0%	Higher	52%	Higher	Higher	Yes	1	1	53.4%	3,217.55	3,265.35	47.80	1.49%
329	01/13/20	42.3%	57.7%	-15.4%	69.3%	66.8%	70.9%	-4.1%	Lower	65%	Higher	Higher	No	0	0	53.2%	3,271.13	3,329.62	58.49	1.79%
330	01/20/20	69.2%	30.8%	38.5%	70.5%	69.6%	72.5%	-2.9%	Higher	59%	Higher	Lower	No	0	0	53.1%	3,321.03	3,295.47	-25.56	-0.77%
331	01/27/20	30.8%	69.2%	-38.5%	66.5%	67.5%	66.1%	1.4%	Lower	77%	Higher	Lower	Yes	1	0	53.2%	3,247.16	3,225.52	-21.64	-0.67%
332	02/03/20	26.9%	73.1%	-46.2%	70.0%	66.3%	71.7%	-5.4%	Lower	65%	Higher	Higher	No	0	1	53.0%	3,235.66	3,327.71	92.05	2.84%
333	02/10/20	40.9%	59.1%	-18.2%	68.1%	67.2%	68.7%	-1.5%	Lower	58%	Higher	Higher	No	0	1	52.9%	3,318.28	3,380.16	61.88	1.86%
334	02/17/20	48.0%	52.0%	-4.0%	67.2%	70.4%	64.2%	6.2%	Lower	60%	Higher	Lower	Yes	1	0	53.0%	3,369.04	3,337.75	-31.29	-0.93%
335	02/24/20	35.7%	64.3%	-28.6%	68.9%	67.5%	69.7%	-2.2%	Lower	59%	Higher	Lower	Yes	1	0	53.2%	3,257.61	2,954.22	-303.39	-9.31%
336	03/02/20	48.4%	51.6%	-3.2%	68.7%	73.0%	64.7%	8.3%	Lower	69%	Lower	Lower	Yes	1	0	53.3%	2,974.28	2,972.37	-1.91	-0.06%
337	03/09/20	36.7%	63.3%	-26.7%	72.3%	65.5%	76.3%	-10.9%	Lower	55%	Higher	Lower	Yes	1	0	53.5%	2,863.89	2,711.02	-152.87	-5.34%
338	03/16/20	33.3%	66.7%	-33.3%	68.8%	66.4%	70.0%	-3.6%	Lower	54%	Higher	Lower	Yes	1	0	53.6%	2,508.59	2,304.92	-203.67	-8.12%
339	03/23/20	32.4%	67.6%	-35.3%	72.4%	66.8%	75.0%	-8.2%	Lower	53%	Higher	???	???	???	???	???	???	???	???	???

Weekly Reports Page: [TimingResearch.com/reports](https://TimingResearch.com/reports)

Raw Data Page: [TimingResearch.com/rawdata](https://TimingResearch.com/rawdata)

Current Survey Page: [TimingResearch.com/currentsurvey](https://TimingResearch.com/currentsurvey)

Any feedback: [TimingResearch.com/contact](https://TimingResearch.com/contact)

*NOTE: The following open-ended answers are solely the opinions of the anonymous respondents to this survey. Responses are mostly unedited, but some have been reformatted slightly for to make them easier to read. Some irrelevant responses (e.g. "none"), or anything obviously fake, or copy and pasted responses have been omitted. All-caps responses have been changed to all lowercase. All responses for each week, unedited, are available in the raw data spreadsheets at [TimingResearch.com/data](https://TimingResearch.com/data).*

**Question #3. For your answer to Question #1, please share what specific reason(s) you think the S&P500 will be heading the direction you chose.**

### **“Higher” Respondent Answers:**

- Things will start to calm down
- it is due for a rebound after that big sell off
- I believe after a slower start to the week, I'm hoping that the oil market will start to pick up, carrying other equities with it.
- Overdue bouncback
- With the relief packet issued by federal government, confidence in economy is growing and this should take market upwards.
- We are near all time lows.

### **“Lower” Respondent Answers:**

- Developing financial & social implications of CV.19.
- covi19
- Because the price action pattern is still bearish and also the volume is still above 20MA. The lower probability is because the little money flow divergence
- China Flue
- Virus test results still increasing Too much stress in credit markets
- the friday activity was absolutely brutal.
- worsening coronavirus environment
- market is in a huge bubble
- lack of leadership at the executive branch.
- Accumulation going on but in the very early innings of a turnaround alot more down days ahead
- coronavirus hasn't been priced into the market yet
- coronavirus
- Bad news, no recovery
- The unemployment rate is expected to increase, as businesses face increasing financial pressures, as the coronavirus pandemic continues into another week.
- Monday will open down. Just not sure there will be anything to push the market back up.
- S&P 500 is on a PE of 17 and Corona virus is going to cut earnings to zero
- oil in a downward move as well as US100 ... corona virus Big Airlines may go to

[Monday, 1PM ET: Top Trading Experts Discuss This Report! Click Here To Learn More.](#)

---

bankruptcy ... and from a technical point of view no support is seen... and the cash dollar will remain the king ... any intervention from the FED may change the view.

- Fear of COVID 19. Then the disruption of products and services to escalate
- High. Vix index
- COvid-19 STORY and thin non-liquid market conditions

### **Question #4. What are your top questions for trading experts about current market conditions and how to trade over the next few weeks?**

- Knowing the bottom has been put in
- average down or wait for a bottom?
- The fact I quit trading because of Forex brokerage houses scam and fraud and many of my friends got scammed including me
- How do you idiots keep your jobs?
- What do you consider the priorities for selecting shares in the immediate future ?
- why didn't you guys issue a sell recommendation before then during the selloff? and HOW exactly do you idiots keep your jobs?
- what will you be looking for as the signs of capitulation?
- What stock are hedges against further downside of the Dow and S&P?
- How to trade volatility for next few weeks?
- how would you trade bond ETF's?
- have you ever seen a financial crisis like this before?
- How to stop shorting the markets?
- none
- Is the market becoming a faster moving entity?, due to all the different factors - algo's, AI, etc. /// does the little guy stand a chance?
- Well the big question is where is the bottom, are we close to it???

### Question #5. Additional Comments/Questions/Suggestions?

Thank you for all the feedback, feel free to [contact us](#) at any time with any other questions or comments.

- Thank you ... Wishing you a great time ahead
- when is the crisis, to the markets, going to end?
- Self isolate
- I heard one commentator mention that what used to take weeks to develop in the markets, now only takes hours. // Is this a valid statement?

## Standing Predictions

Below are some of the one-time prediction-type questions asked in previous weeks that have not been finalized yet or have been finalized recently. Suggest a future question [here](#).

**Week #283, 02/24/19 Report** - What year do you think recreational cannabis use will be federally legalized in the United States?

- 4%: 2019
- 40%: 2020
- 12%: 2021
- 20%: 2022
- 0%: 2023
- 8%: 2024
- 16%: After 2024 or Never